






| SITE DATA (QUIKTRIP STORE 1087) | |
|---------------------------------|--|
| TAX PARCEL ID #: | 025-211-98 025-211-99 025-211-93 |
| TOTAL SITE / REZONING AREA: | EXISTING (+/-11.009 AC.) PROPOSED (+/-12.14 AC.) -INCLUDES (+/-1.1307 AC.) OF RIGHT-OF-WAY TAKE |
| EXISTING ZONING: | R-3 |
| PROPOSED ZONING: | B-2 (CD) |
| PROPOSED USE: | AREA A: CONVENIENCE STORE WITH FUEL SALES REMAINING AREAS ARE LIMITED TO B-2 PERMITTED USES EXCLUDING USES INDICATED IN DEVELOPMENT STANDARDS |
| DEVELOPMENT STANDARDS: | |
| SETBACK (W.T. HARRIS BLVD.) | 20' |
| SETBACK (I-485 ON-RAMP) | 20' |
| SETBACK (INTERIOR) | 0' OR 8' (NON-RESIDENTIAL) |
| REAR (INTERIOR) | 10' |
| REAR (INTERIOR) | 10' |
| BUILDING AREA: | AREA A: MAXIMUM 5,000 SF REMAINING AREAS ARE LIMITED TO A TOTAL OF 40,000 SF WITH EXCEPTIONS/LIMITATIONS INDICATED IN THE DEVELOPMENT STANDARDS |
| BUILDING HEIGHT: | AREA A: MAXIMUM 25' HEIGHT AREA B: MAXIMUM 40' HEIGHT AREA C: MAXIMUM 40' HEIGHT AREA D: MAXIMUM 48' HEIGHT |

| LEGEND | |
|---|---------------------------|
|  | BOUNDARY LINE |
|  | CONCRETE CURB AND GUTTER |
|  | BUILDING/PARKING ENVELOPE |
|  | TREE SAVE AREA |
|  | PARKING SPACE INDICATOR |

Professional Engineer Seal for North Carolina, No. 31342, signed by Carlos A. Garcia, NC COA# C-532, Project No.: 11/21/17.

QuikTrip No. 1087

EST W.T. HARRIS BLVD.
CHARLOTTE, NC

QUICKTRIP CORPORATION - CHARLOTTE DIVISION OFFICE
3701 ARCO CORPORATE DRIVE - SUITE 150 - CHARLOTTE, NC 28272



© COPYRIGHT QUIKTRIP CORPORATION 2011
ANY UNAUTHORIZED USE, REPRODUCTION,
PUBLICATION, DISTRIBUTION, OR SALE IN
WHOLE OR IN PART, IS STRICTLY FORBIDDEN.

| |
|-------------------------------|
| PROTOTYPE: P-92.02 (11/01/17) |
| DIVISION: |
| VERSION: 001 |
| DESIGNED BY: |
| DRAWN BY: JHE |
| REVIEWED BY: |

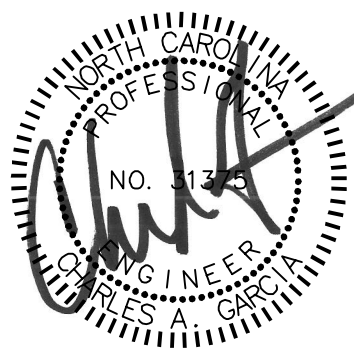
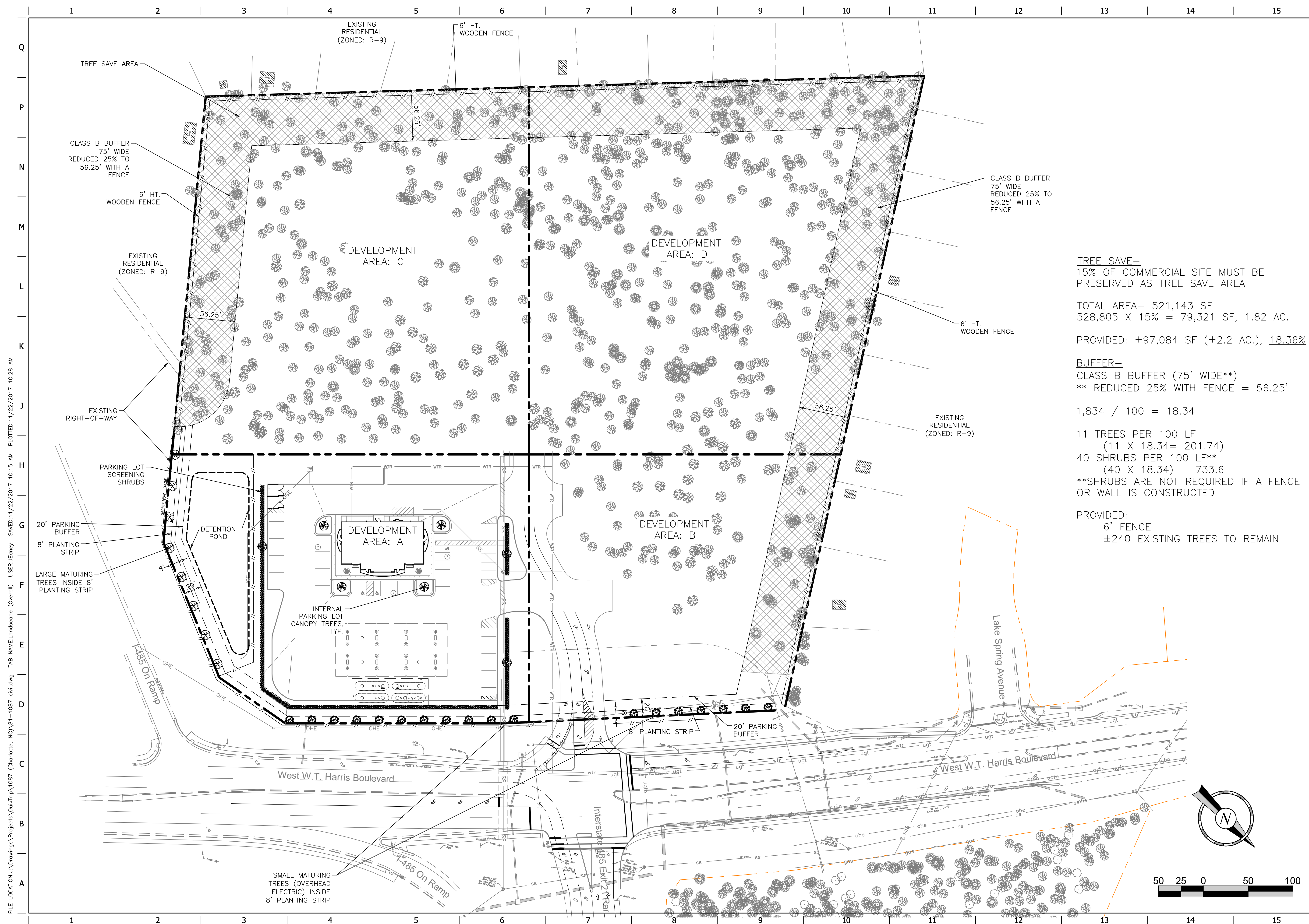
[illegible]

SHEET TITLE:

REZONING PLAN
PETITION #:

SHEET NUMBER

RZ-1



NC COA: C-153
PROJECT NO.: 11/21/17

FREELAND and KAUFFMAN, INC.
Engineers • Landscape Architects
209 West Stone Avenue
Greenville, South Carolina 29609
864-233-5497
fax 864-233-8985

QuikTrip No. 1087

EST W.T. HARRIS BLVD.
CHARLOTTE, NC

QUIKTRIP CORPORATION - CHARLOTTE DIVISION OFFICE
3701 ARCO CORPORATE DRIVE - SUITE 150 - CHARLOTTE NC 28217



© COPYRIGHT QUIKTRIP CORPORATION 2011
ANY UNAUTHORIZED USE, REPRODUCTION,
PUBLICATION, DISTRIBUTION, OR SALE IN
WHOLE OR IN PART, IS STRICTLY FORBIDDEN.

PROTOTYPE: P-92.02 (11/01)

DIVISION:

DESIGNED

DRAWN BY

REVIEWED

| | | | |
|--|--|--|--|
| | | | |
|--|--|--|--|

[illegible]

| | |
|--|----------------------|
| | ORIGINAL ISSUE DATE: |
|--|----------------------|

SHEET TITLE:

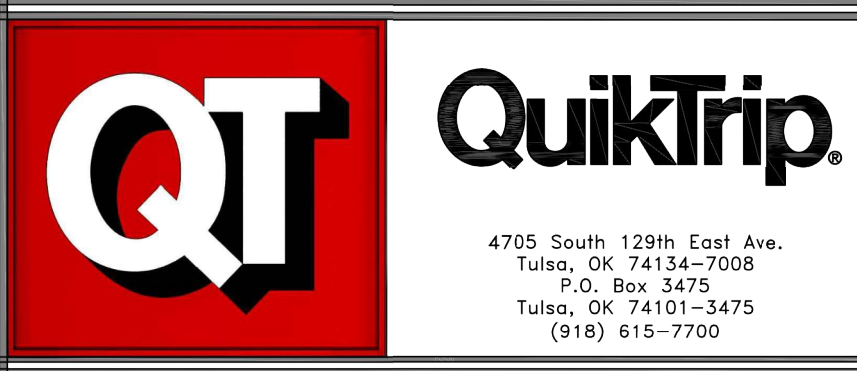
LANDSCAPE PLAN
PETITION #:

SHEET NUMBER:

RZ-2

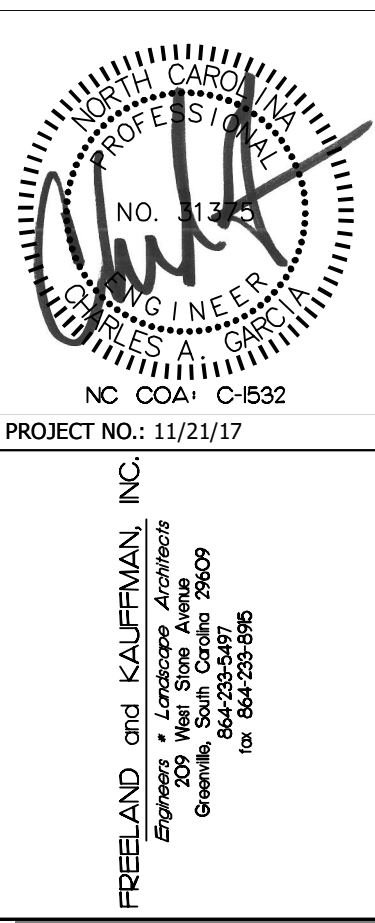
FILE LOCATION: J:\Drawings\Projects\QuikTrip\1087 (Charlotte, NC)\81-1087 civil.dwg TAB NAME: Development Notes USER: JEdney SAVED: 11/22/2017 10:14 AM PLOTTED: 11/22/2017 10:14 AM

FILE LOCATION: J:\Drawings\QuikTrip\1087 (Charlotte, NC)\81-1087-1087.dwg TAB NAME: Building Elevations 1 USER: Jdeaney SAVED: 11/21/2017 5:08 PM PLOTTED: 11/21/2017 5:16 PM



| | | | | | | | | | | | |
|--------------------------|--|-----------------------|-------------------------|-------------------------|--|--|--|------------|-------------------------------|---|--|
| Store # 1087 | | | G3S Building Elevations | | | Address: NW Corner Harris Blvd. & I-485 | | | City, State: Charlotte, NC | | |
| Serial # 81-1087-G3S2 | | Scale: 1/16"=1'-0" | | Issue Date: 11.17.17 | | Drawn By: TR | | Rev/Notes: | | COPYRIGHT © 2011 QUIKTRIP CORPORATION. DESIGN PATENTS QUIKTRIP PLANS ARE THE EXCLUSIVE PROPERTY OF QUIKTRIP CORPORATION, TULSA, OKLAHOMA. THESE PLANS ARE PROTECTED IN THEIR ENTIRETY BY DOMESTIC AND INTERNATIONAL COPYRIGHT AND PATENT STATUTES. ANY UNAUTHORIZED USE, REPRODUCTION, PUBLICATION, DISTRIBUTION OR SALE IN WHOLE OR IN PART, IS STRICTLY FORBIDDEN. | |

| # | FINISH | MANUFACTURER | SPECIFICATION |
|----|-------------------|-------------------|------------------------|
| 1 | BRONZESTONE | INTERSTATE BRICK | ATLAS STRUCTURAL BRICK |
| 2 | MIDNIGHT | INTERSTATE BRICK | ATLAS STRUCTURAL BRICK |
| 3 | HLZ ALUMINUM | ALPOLIC | FASCIA |
| 4 | QT RED | LANE | STANDING SEAM AWNING |
| 5 | RED POLYCARBONATE | ALLEN INDUSTRIES | ILLUMINATED BAND |
| 6 | DARK BRONZE | LANE | METAL PAINT |
| 7 | BLACK | ALL COURT FABRICS | POLYPRO 95 MESH |
| 8 | CL-60R | ALLEN INDUSTRIES | SIGNAGE |
| 9 | GRANITE | ATO | ATD5 EPS |
| 10 | IDB-20 | ALLEN INDUSTRIES | ILLUMINATED SIGNAGE |



QuikTrip No. 1087
8291 WEST W.T. HARRIS BLVD.
CHARLOTTE, NC
QUIKTRIP CORPORATION - CHARLOTTE DIVISION OFFICE
3701 ARCO CORPORATE DRIVE - SUITE 150 - CHARLOTTE, NC 28273

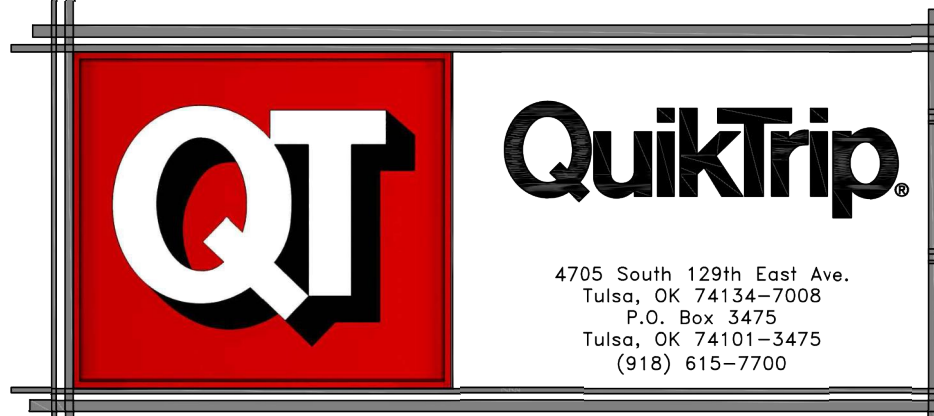
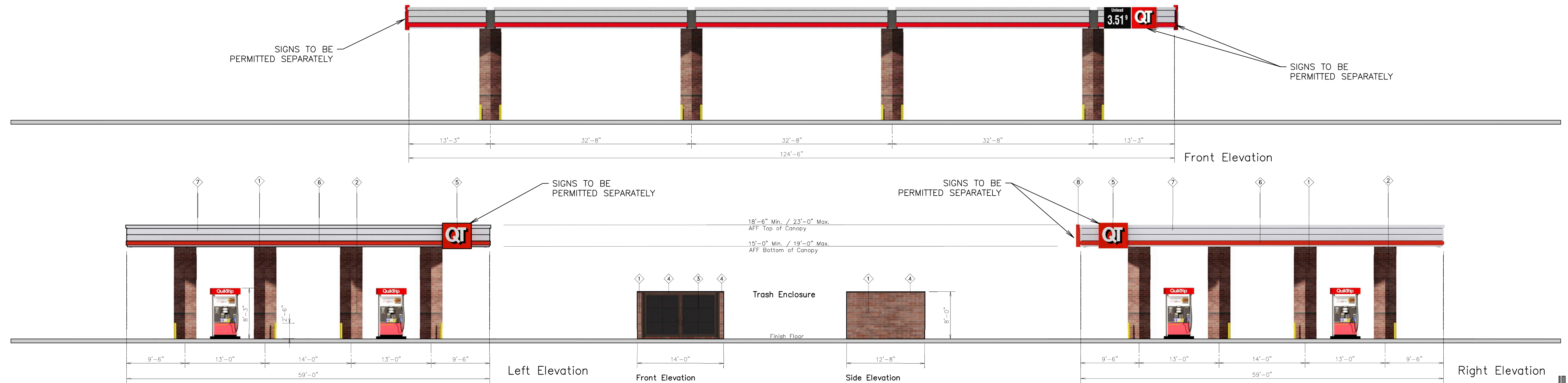


| | |
|--------------|--------------------|
| PROTOTYPE: | P-92.02 (11/01/17) |
| DIVISION: | |
| VERSION: | 001 |
| DESIGNED BY: | |
| DRAWN BY: | JHE |
| REVIEWED BY: | |

| REV | DATE | DESCRIPTION | ORIGINAL | ISSUE DATE: |
|-----|------|-------------|----------|-------------|
| | | | | |
| | | | | |
| | | | | |
| | | | | |
| | | | | |
| | | | | |
| | | | | |
| | | | | |
| | | | | |

SHEET TITLE:
BUILDING ELEVATIONS
PETITION #:
SHEET NUMBER:
RZ-4

FILE LOCATION: J:\Drawings\Projects\QuikTrip\1087 (Charlotte, NC)\81-1087-Double Stack 8 Canopy Elevations USER: JEdney SAVED: 11/21/2017 5:20 PM PLOTTED: 11/21/2017 5:20 PM



| | | | | | | | | | |
|----------|---------------------------------------|--------|-------------|-------------|--------------------------------|-----------|--------------|---------------|--|
| Store # | 1087 Double Stack 8 Canopy Elevations | | | Address: | NW Corner Harris Blvd. & I-485 | | City, State: | Charlotte, NC | |
| Serial # | 81-1087-GD08 | Scale: | 1/16"=1'-0" | Issue Date: | 11.17.17 | Drawn By: | TR | Rev/Notes: | |

COPYRIGHT © 2011 QUIKTRIP CORPORATION DESIGN PATENTS
QUIKTRIP PLANS ARE THE EXCLUSIVE PROPERTY OF QUIKTRIP CORPORATION, TULSA, OKLAHOMA. THESE PLANS ARE PROTECTED IN THEIR ENTIRETY BY DOMESTIC AND INTERNATIONAL COPYRIGHT AND PATENT STATUTES. ANY UNAUTHORIZED USE, REPRODUCTION, PUBLICATION, DISTRIBUTION OR SALE IN WHOLE OR IN PART, IS STRICTLY FORBIDDEN.

| ① | FINISH | MANUFACTURER | SPECIFICATION |
|---|-------------------|-------------------|------------------------|
| 1 | BRONZESTONE | INTERSTATE BRICK | ATLAS STRUCTURAL BRICK |
| 2 | MIDNIGHT BLACK | INTERSTATE BRICK | ATLAS STRUCTURAL BRICK |
| 3 | BLACK | ALL COURT FABRICS | POLYPRO 95 MESH |
| 4 | DARK BRONZE | LANE | METAL PAINT |
| 5 | ISO-20 | ALLEN INDUSTRIES | ILLUMINATED SIGNAGE |
| 6 | RED POLYCARBONATE | ALLEN INDUSTRIES | ILLUMINATED BAND |
| 7 | HE-7 ALUMINUM | ALPOL | CANOPY |
| 8 | DDP-XOU-R | ALLEN INDUSTRIES | ILLUMINATED SIGNAGE |

NC COA: C-532
PROJECT NO.: 11/21/17

FREE/LAND: 515 KALFFMAN, INC.
209 West Stone Avenue
Greenville, SC 29609
Tel: 864-225-5497
Fax: 864-225-5956

QuikTrip No. 1087

8291 WEST W.T. HARRIS BLVD.
CHARLOTTE, NC

QUIKTRIP CORPORATION - CHARLOTTE DIVISION OFFICE
3701 ARCO CORPORATE DRIVE - SUITE 150 - CHARLOTTE, NC 28273

© COPYRIGHT QUIKTRIP CORPORATION 2011
ANY UNAUTHORIZED USE, REPRODUCTION,
PUBLICATION, DISTRIBUTION, OR SALE IN
WHOLE OR IN PART, IS STRICTLY FORBIDDEN.

PROTOTYPE: P-92.02 (11/01/17)
DIVISION:
VERSION: 001
DESIGNED BY:
DRAWN BY: JHE
REVIEWED BY:

| REV | DATE | DESCRIPTION |
|-----|------|-------------|
| | | |
| | | |
| | | |
| | | |
| | | |

ORIGINAL ISSUE DATE:

SHEET TITLE:
CANOPY ELEVATIONS
PETITION #:

SHEET NUMBER:
RZ-5