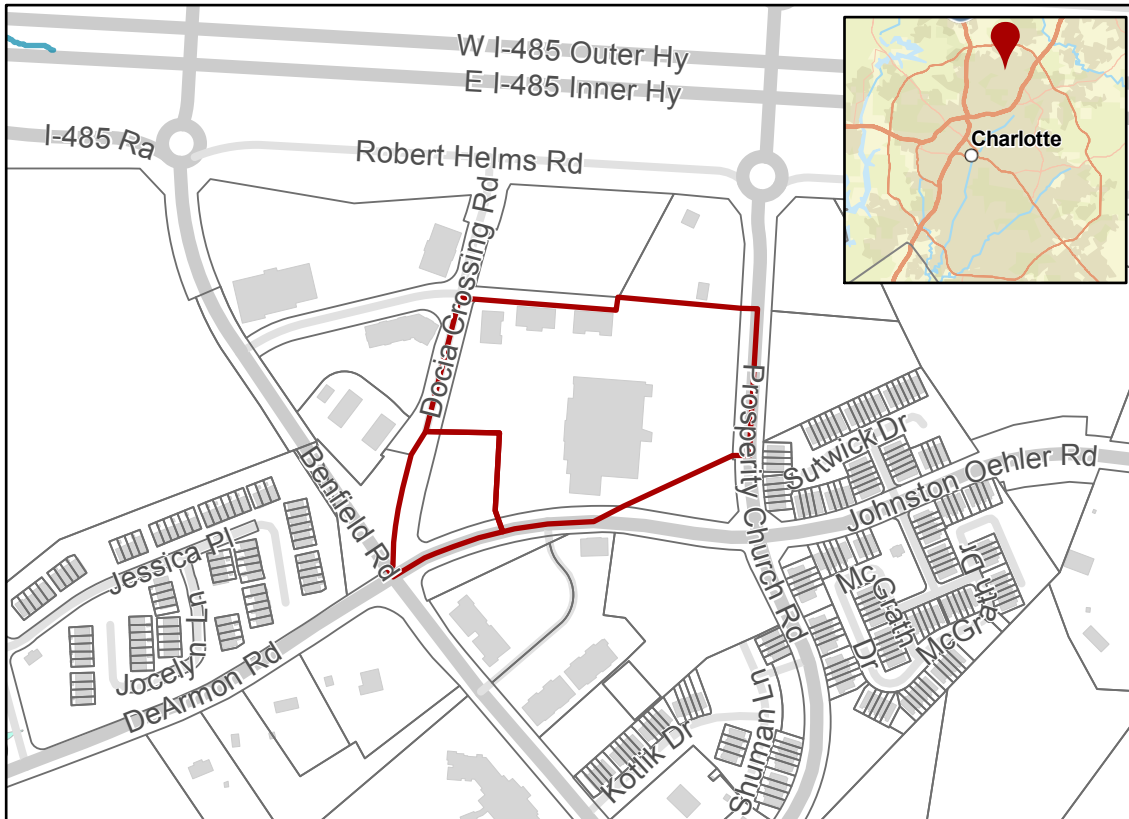


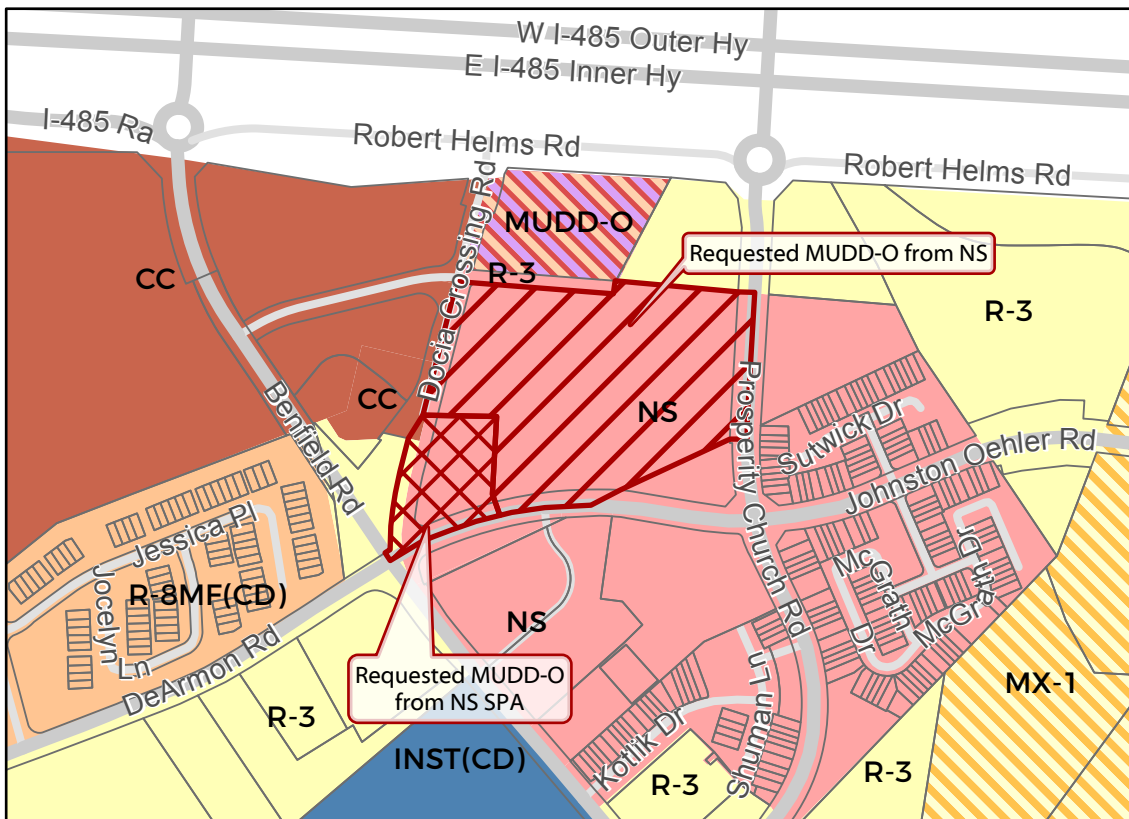
Rezoning Map

2017-152 : Lockard Development, Inc.
Current Zoning NS, NS SPA (Neighborhood Services;
Neighborhood Services Site Plan Amendment)
Requested Zoning MUDD-O (Mixed Use Development District-Optional)
Approximately 8.914 acres
Location of Requested Rezoning



- 2017-152
- Inside City Limits
- Parcel
- Buildings
- FEMA Flood Plain
- Streams
- City Council District**
- 4-Gregory A. Phipps

Existing Zoning & Rezoning Request



- Requested MUDD-O from NS
- Requested MUDD-O from NS SPA
- Parcel

Zoning Classification

- Single Family
- Multi-Family
- Mixed Residential
- Institutional
- Business
- Commercial Center
- Mixed Use



N

0 250 500 1,000 Feet

Map Created 9/27/2017