

2017-147 : QuikTrip Corporation

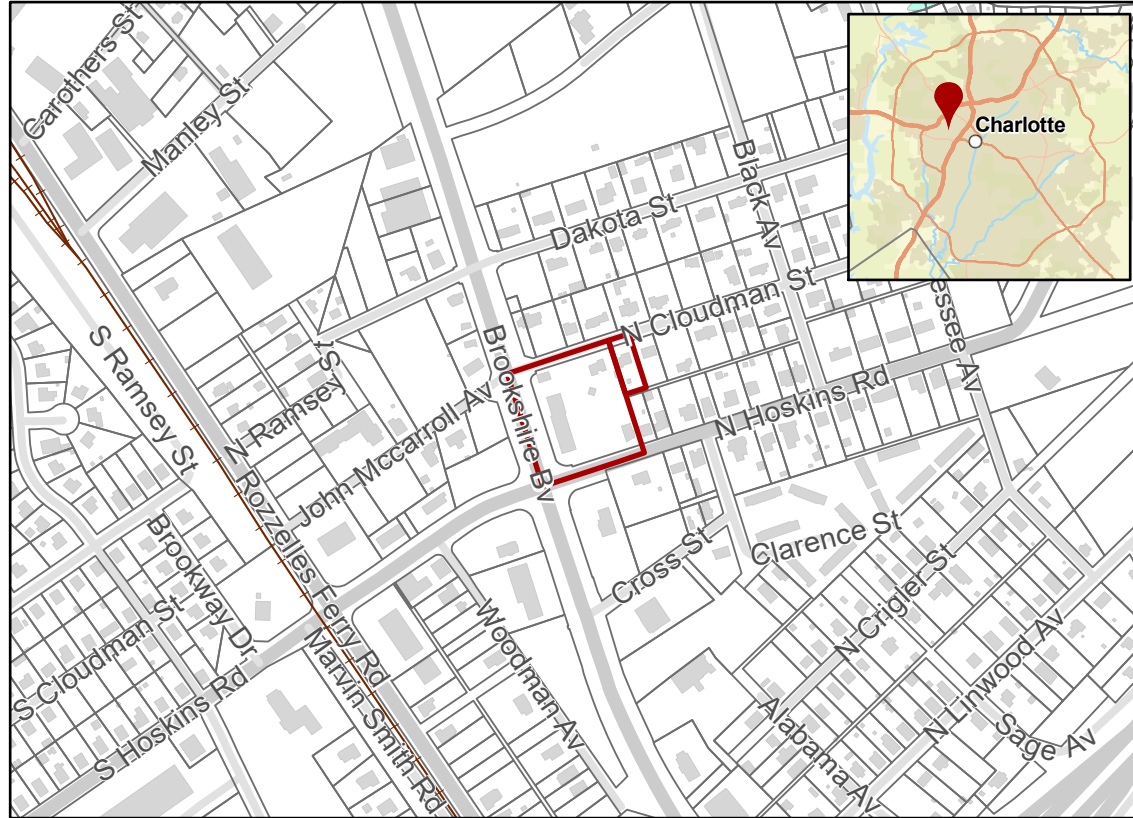
Current Zoning R-5, B-1(CD)

(Single Family Residential, Neighborhood Business, Conditional)

Requested Zoning B-1(CD), B-1(CD) SPA (Neighborhood Business, Conditional;
Neighborhood Business, Conditional, Site Plan Amendment)

Approximately 2.045 acres

Location of Requested Rezoning



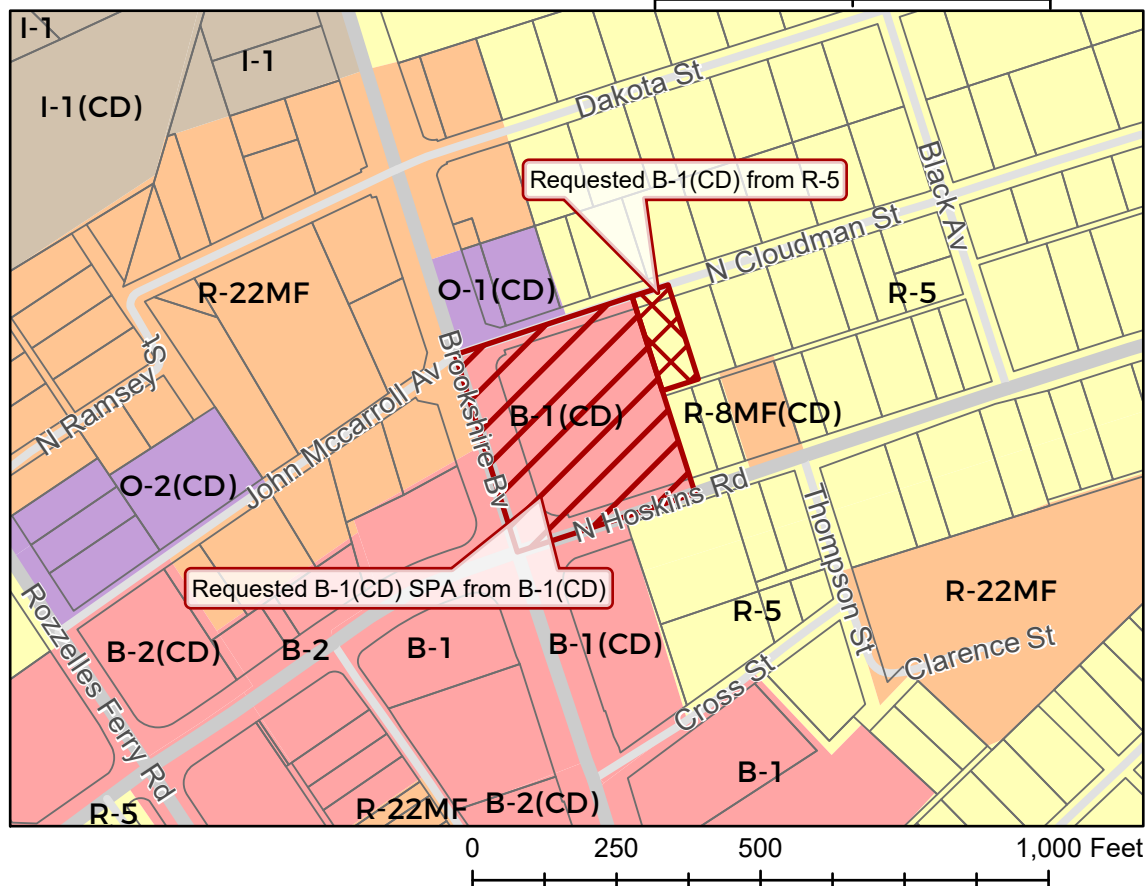
Rezoning Map



CHARLOTTE
CHARLOTTE-MECKLENBURG
PLANNING

- 2017-147
- Inside City Limits
- Parcel
- Buildings
- FEMA Flood Plain
- Railway
- City Council District**
 - 2-Justin Harlow

Existing Zoning & Rezoning Request



- Requested B-1(CD) from R-5
- Requested B-1(CD) SPA from B-1(CD)

Zoning Classification

- Single Family
- Multi-Family
- Office
- Business
- Light Industrial



N

Map Created 1/3/2018