

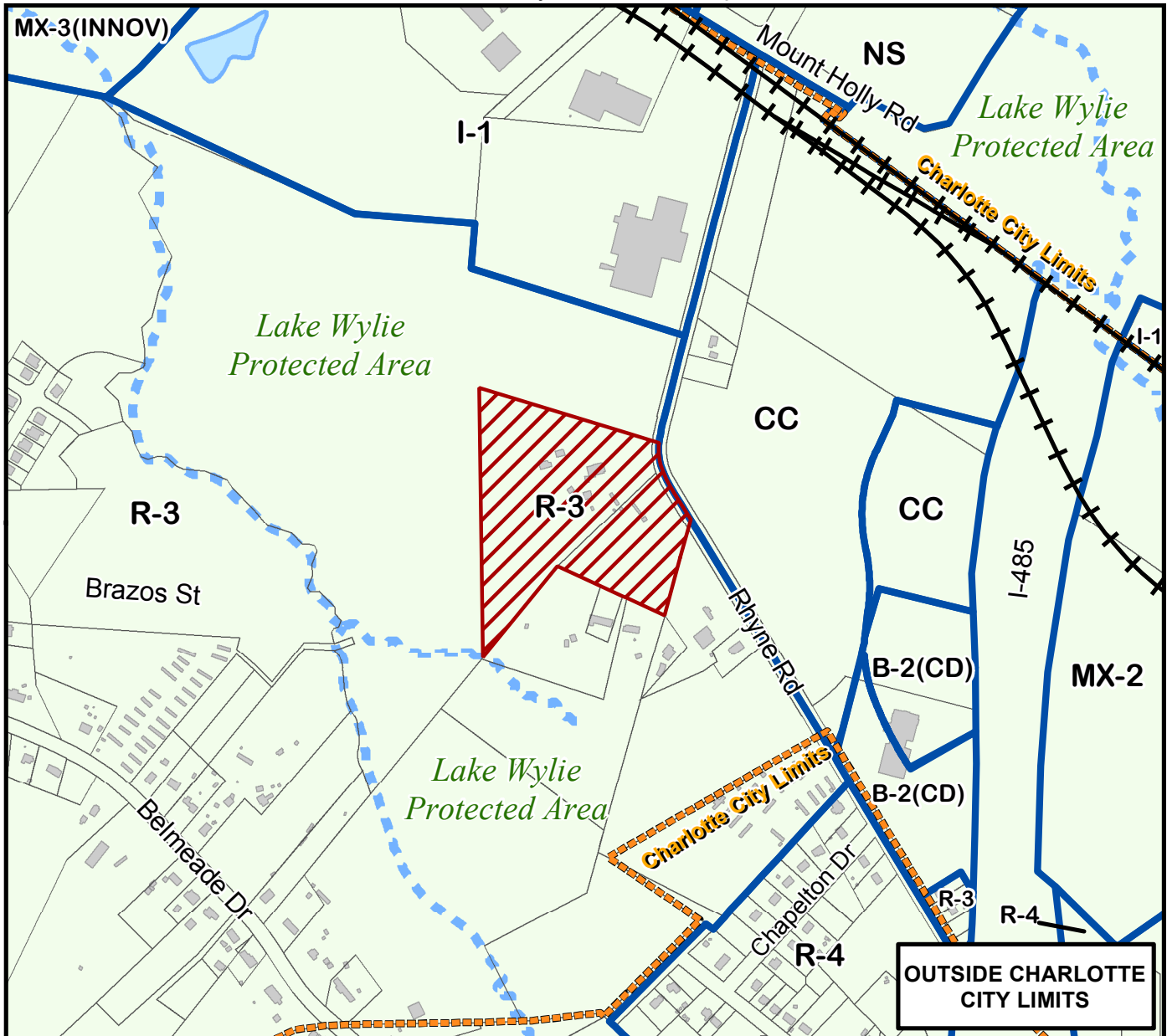
Petition #: **2017-092**

Petitioner: **Direct Power, Inc.**

Zoning Classification (Existing): **R-3(LWPA)**
(Single Family Residential, Lake Wylie Protected Area)

Zoning Classification (Requested): **I-1(CD)(LWPA)**
(Light Industrial, Conditional, Lake Wylie Protected Area)

Acreage & Location: Approximately 14 acres located along the west side of Rhyne Road and in between Mount Holly Road and Chapelton Drive.




Map Produced by the Charlotte-Mecklenburg Planning Department, 5-2-2017.

0 225 450 900 1,350 1,800 Feet



Zoning Map #(s)

66

 Requested I-1(CD)(LWPA) from R-3 (LWPA)

 Existing Building Footprints

 Existing Zoning Boundaries

 Pedestrian Overlay

 Historic District

 Airport Noise Overlay

 Charlotte City Limits

 Creeks and Streams

 FEMA flood plain

 Watershed

 Lakes and Ponds