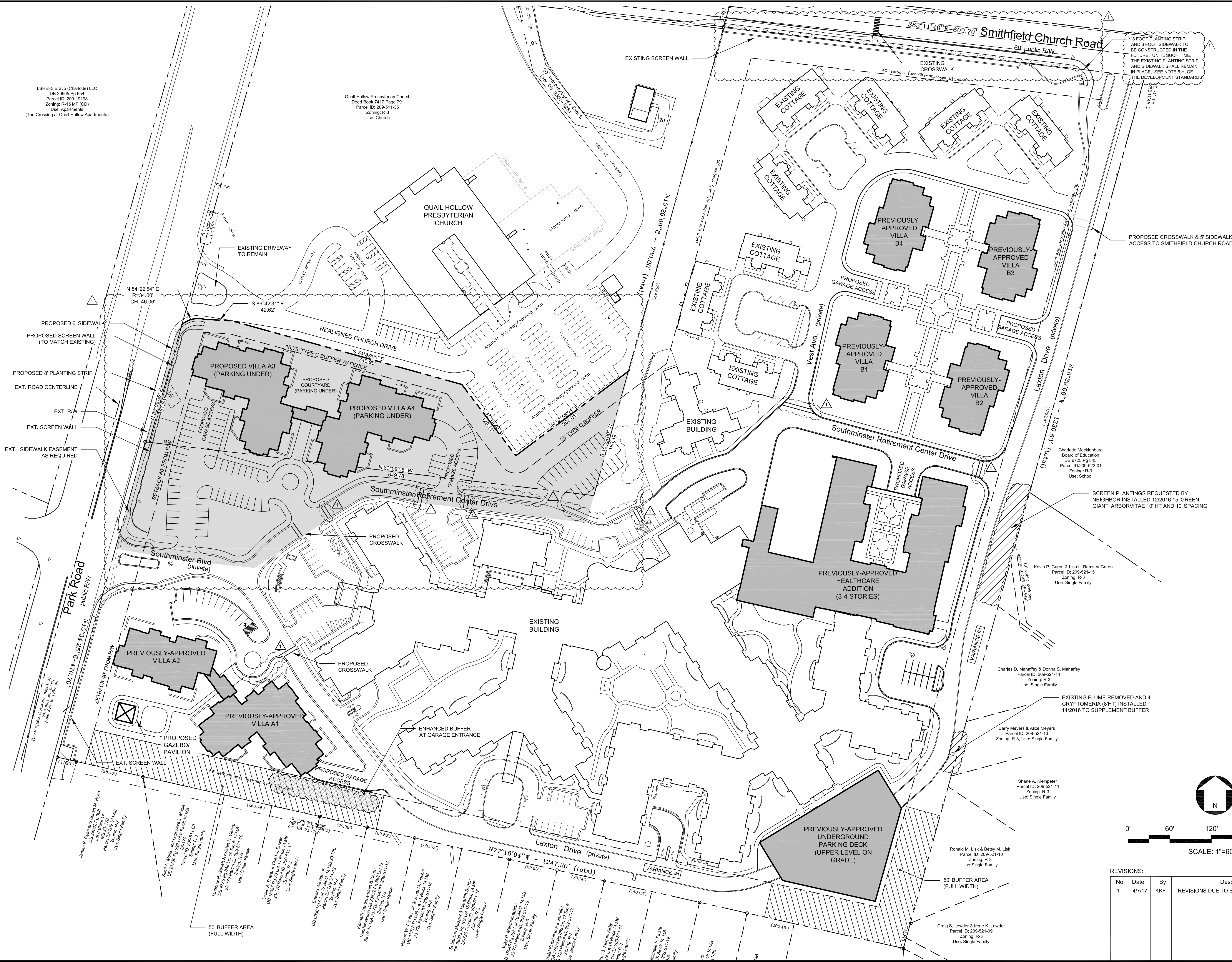


P:\2016 Jobs\16007 - Southminster 2016 Expansion\CAD\Resoning_RZ BASE.dwg



REVISIONS:

No.	Date	By	Description
1	4/7/17	KKF	REVISIONS DUE TO STAFF COMMENTS

Landworks
Design Group, P.A.
7521 Little Avenue, Suite 111
Charlotte, NC 28226
704-941-6804 fax: 704-941-6804

130 WEST SIXTH STREET
CHARLOTTE, NC 28202
F: 704.540.2001
F: 704.362.8002

SOUTHMINSTER RETIREMENT
COMMUNITY
CHARLOTTE, NC
REZONING PETITION # 2017-052

SCHEMATIC
SITE PLAN

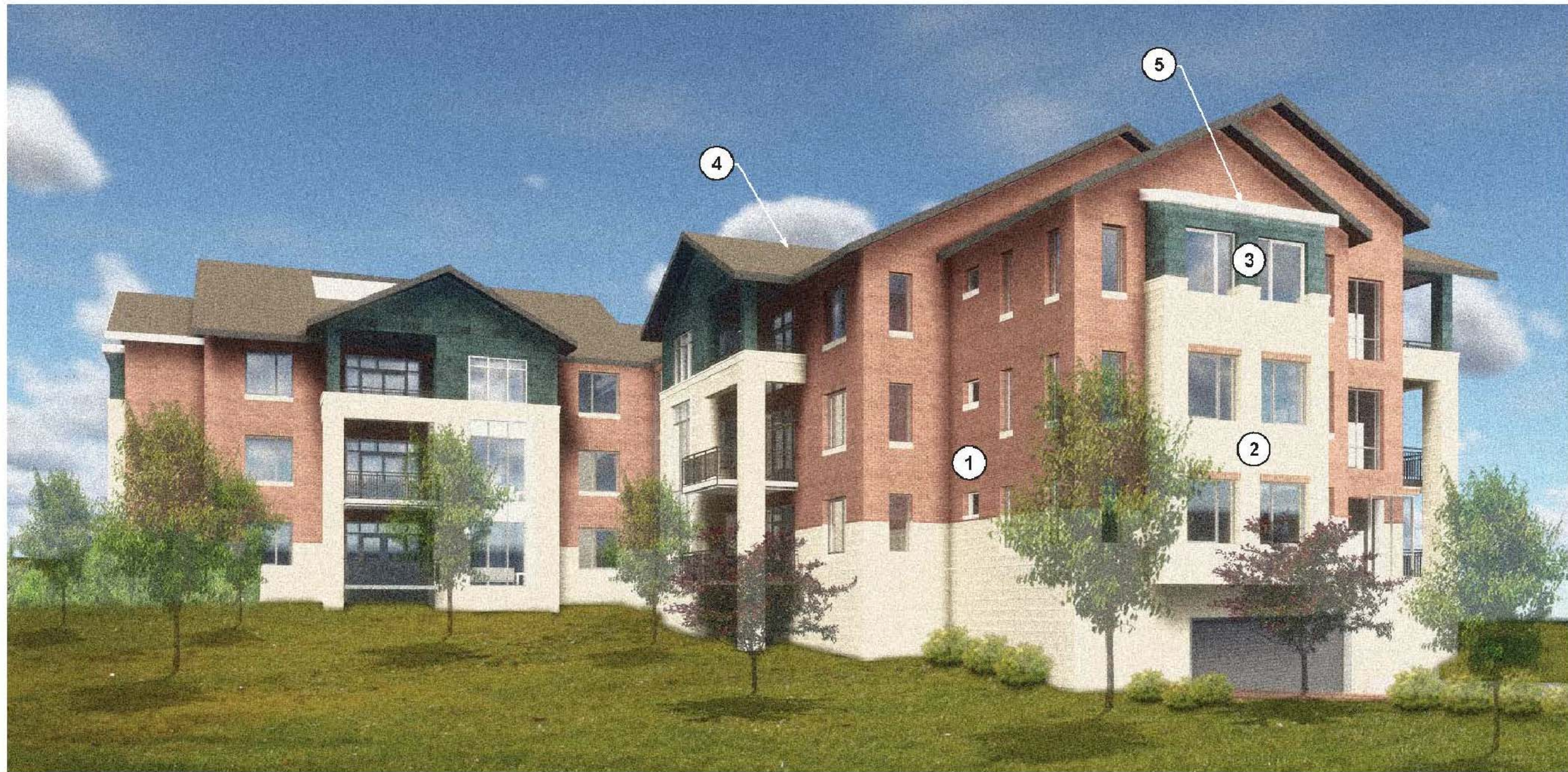
seals

This Plan Is A
Preliminary Design.
NOT Released For
Construction.

CORPORATE CERTIFICATIONS
NC PE: C-2930 NC LA: C-253
SC ENG: NO. 3599 SC LA: NO. 211

Project Manager: MDL
Drawn By: MDL
Checked By: MDL
Date: 2/24/17
Project Number: 16007
Sheet Number:

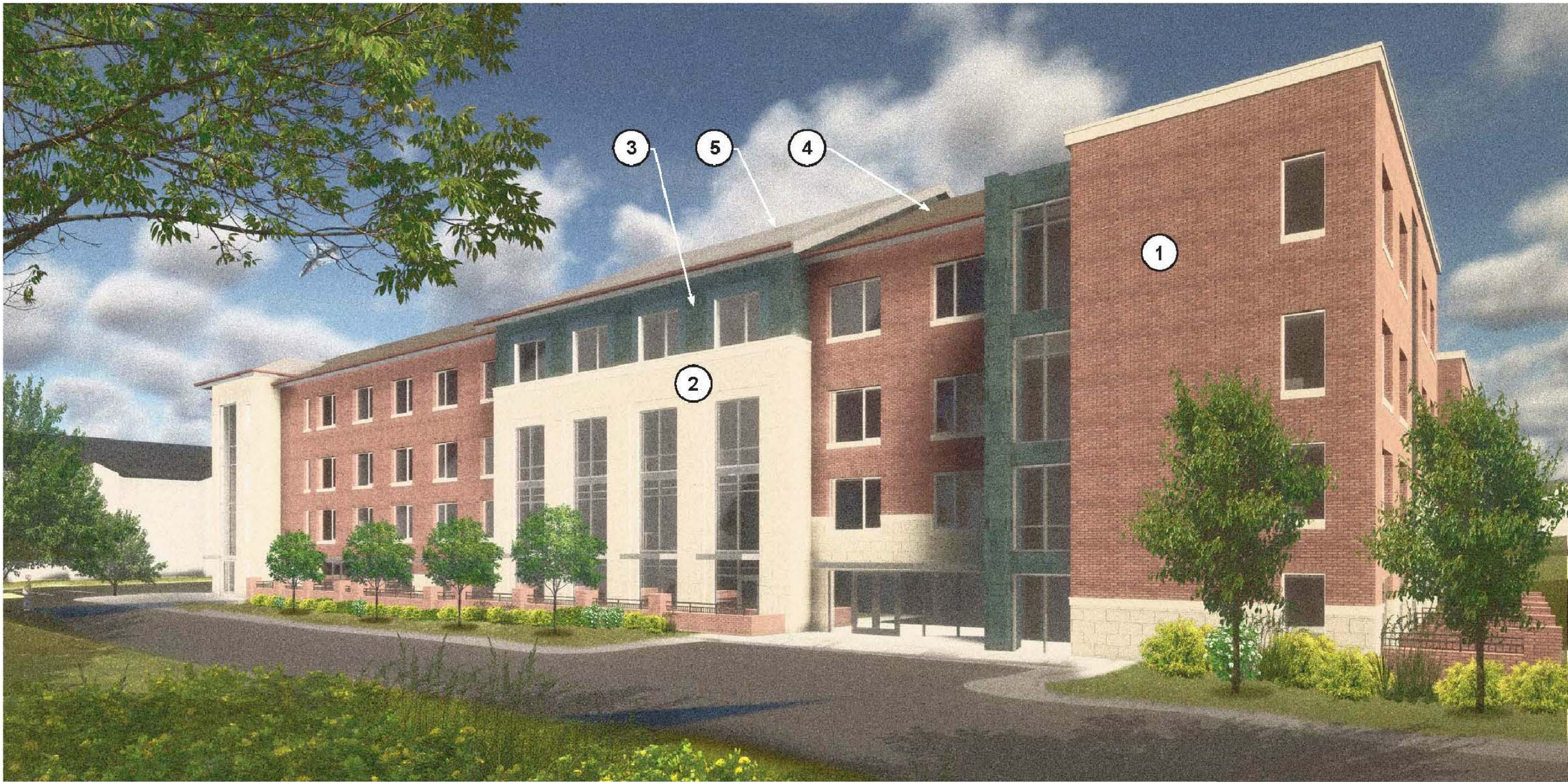
RZ-2
SHEET # 2 OF 3



- 1 Masonry (Brick)
- 2 Masonry (Simulated Limestone/ Light-colored Brick)
- 3 Metal Panel/ Cementitious Panel/ Exterior Tile
- 4 Asphalt roofing shingles
- 5 Metal roofing

APPROVED VILLA BUILDING A1
(VIEW FROM SOUTHEAST)

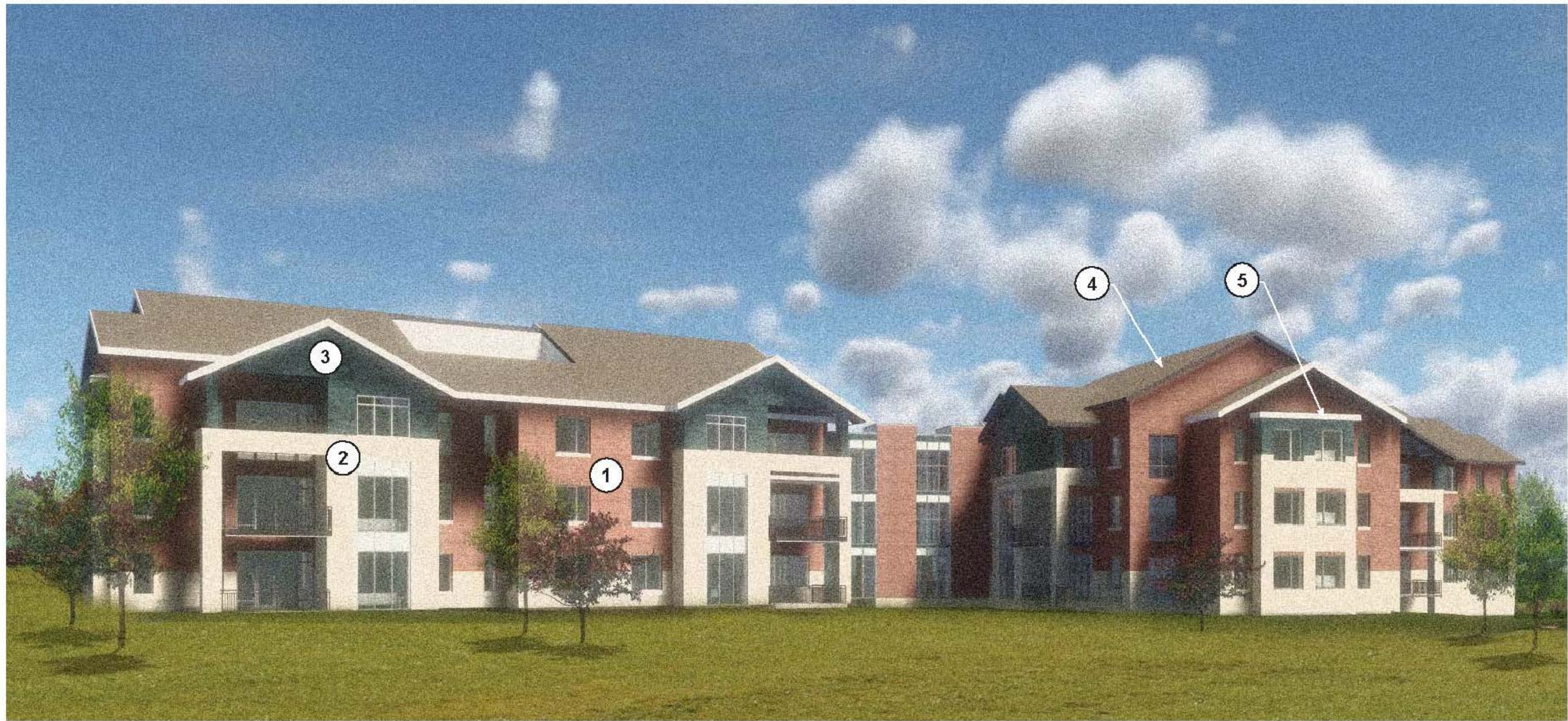
Perkins Eastman 2016.12.12
Southminster - Villa



- 1 Masonry (Brick)
- 2 Masonry (Simulated Limestone/ Light-colored Brick)
- 3 Metal Panel/ Cementitious Panel/ Exterior Tile
- 4 Asphalt roofing shingles
- 5 Metal roofing

APPROVED HEALTHCARE BUILDING
(VIEW FROM BUFFER AREA)

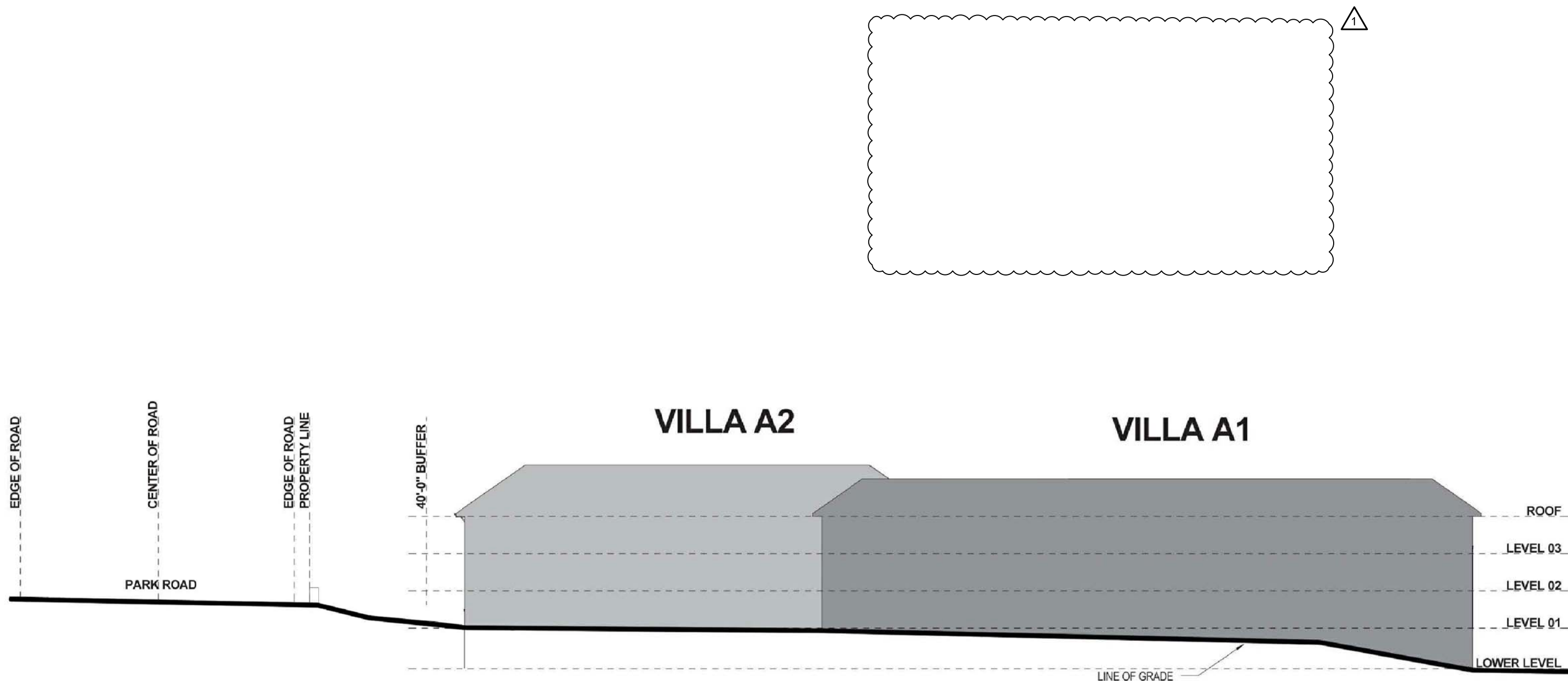
Perkins Eastman 2016.12.12
Southminster - Healthcare Building



- 1 Masonry (Brick)
- 2 Masonry (Simulated Limestone/ Light-colored Brick)
- 3 Metal Panel/ Cementitious Panel/ Exterior Tile
- 4 Asphalt roofing shingles
- 5 Metal roofing

APPROVED VILLA BUILDING A1 & A2
(VIEW FROM SOUTHWEST)

Perkins Eastman 2016.12.12
Southminster - Villa



SITE SECTION OF APPROVED VILLAS
(VIEW FROM BUFFER AREA)

Perkins Eastman 2016.12.12
Southminster - Villa

REVISIONS:			
No.	Date	By	Description
1.	4/17/17	MDH	REVISIONS DUE TO STAFF COMMENTS

SCALE: NOT TO SCALE

ARCHITECTURAL
PERSPECTIVES

seals

This Plan Is A
Preliminary Design.
NOT Released For
Construction.

CORPORATE CERTIFICATIONS
NC PE: C-2930 NC LA: C-253
SC ENG: NO. 3599 SC LA: NO. 211

Project Manager: MDL

Drawn By: MDL

Checked By: MDL

Date: 2/24/17

Project Number: 16007

Sheet Number: