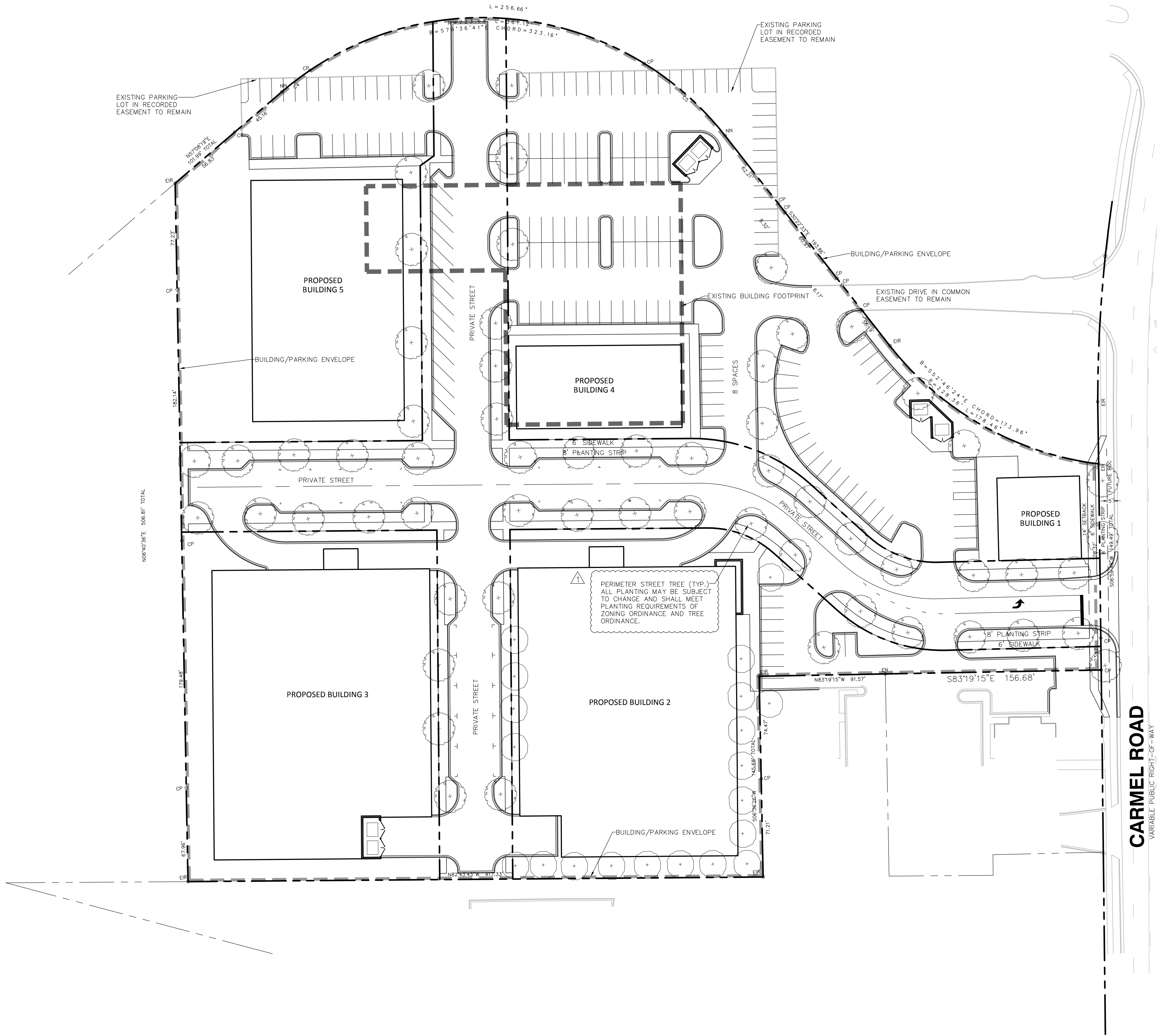
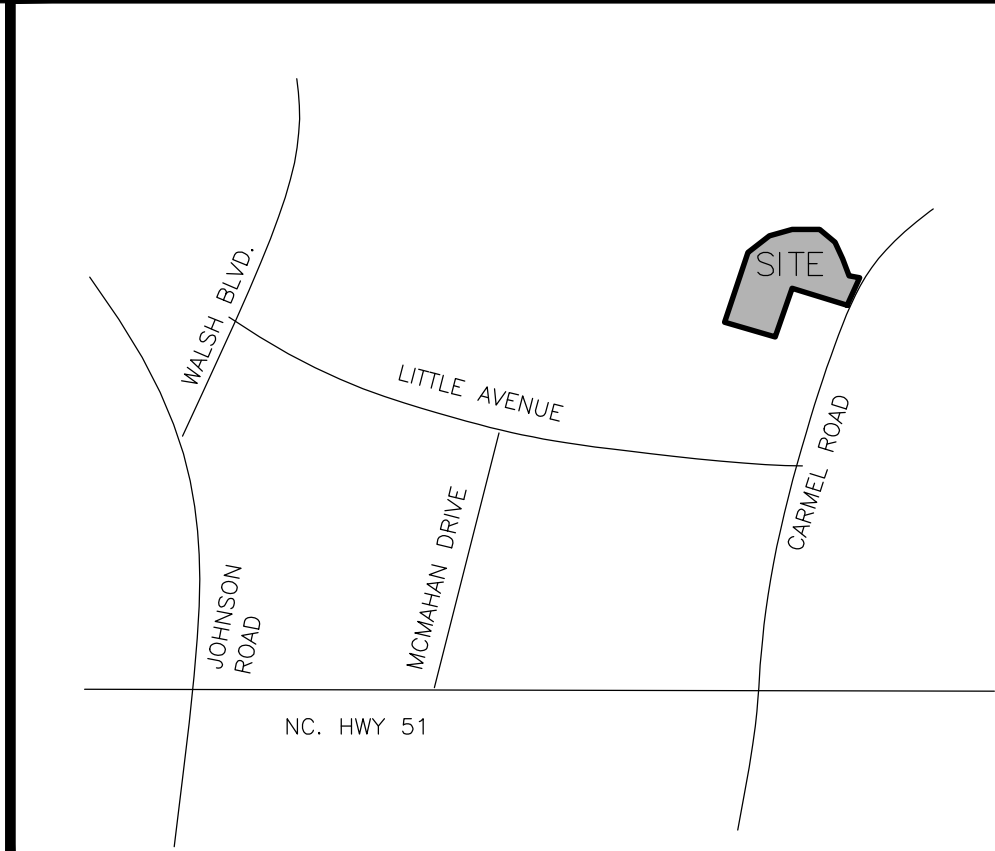
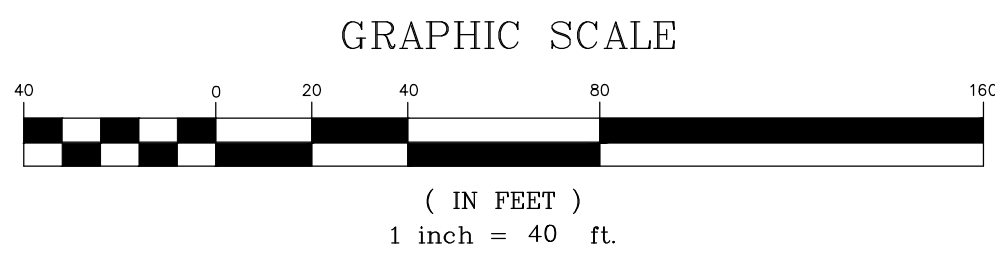
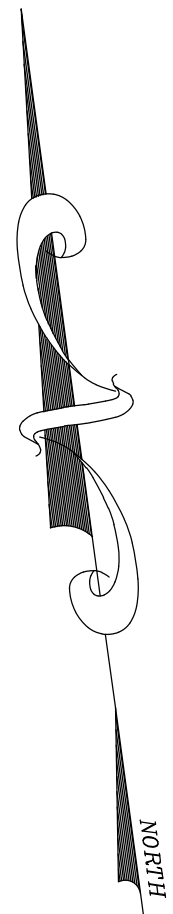


C:\Users\jwaller\Desktop\autocad\publish_13728\16026 B2.1 Reopening.dwg
February 20, 2017 11:15am By: JWaller



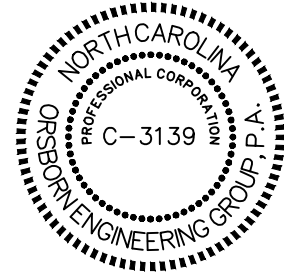
CARMEL ROAD
VARIABLE PUBLIC RIGHT-OF-WAY



VICINITY MAP
NOT TO SCALE

SCHEMATIC SITE PLAN PHASE 2
PETITION #2017-021
FOR
6300 CARMEL ROAD
CHARLOTTE, NORTH CAROLINA

RED PARTNERS, LLC
711 CENTRAL AVE.
CHARLOTTE, NC 28204



REVISIONS
DATE
02/20/17
REVISED PER COMMENTS

JOB #	16026
DATE:	11/09/16
SCALE:	1" = 40'
DRAWN BY:	JAW
APPROVED BY:	JCO

RZ-2

ORSBORN ENGINEERING GROUP
610 EAST MOREHEAD STREET, SUITE 106
CHARLOTTE, NC 28202
P) 704-749-1432 • F) 704-749-1433



Architectural elevation drawing of the proposed building. The drawing shows a two-story structure with a brick base and a light-colored upper section. The building features multiple windows and a central entrance. The drawing includes a scale bar indicating 1/8" = 1'-0" and a north arrow. The drawing is labeled "PROPOSED BUILDING" and "10000 BLOCK OF 10TH AVENUE".

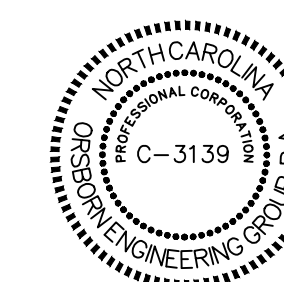
Architectural elevation drawing of a building facade. The drawing shows a long, low building with a flat roof and a series of windows. The facade is divided into a light-colored upper section and a dark-colored lower section. A dashed line indicates a proposed addition or a different section of the building. The drawing includes a scale bar (1/8" = 1'-0") and a north arrow. The building is set against a blue sky with clouds. The drawing is labeled "ELEVATION" and "SECTION".

CHARLOTTE, NORTH CAROLINA

CARMEL ROAD RE-ZONING

© Copyright 2017 Merrimack

RED PARTNERS, LLC
711 CENTRAL AVE.
CHARLOTTE, NC 28204



JOB #	16026
DATE:	11/09/16
SCALE:	NTS
DRAWN BY:	JAW
APPROVED BY:	JCO

RZ-3

