



MECKLENBURG COUNTY

Park and Recreation Department

MEMORANDUM

SENT ELECTRONICALLY THIS DATE
NO HARDCOPY TO FOLLOW

TO: Zenia Duhaney, Associate Planner
Charlotte Mecklenburg Planning Department

FROM: Joyce Figueroa, Planner
Capital Planning Services

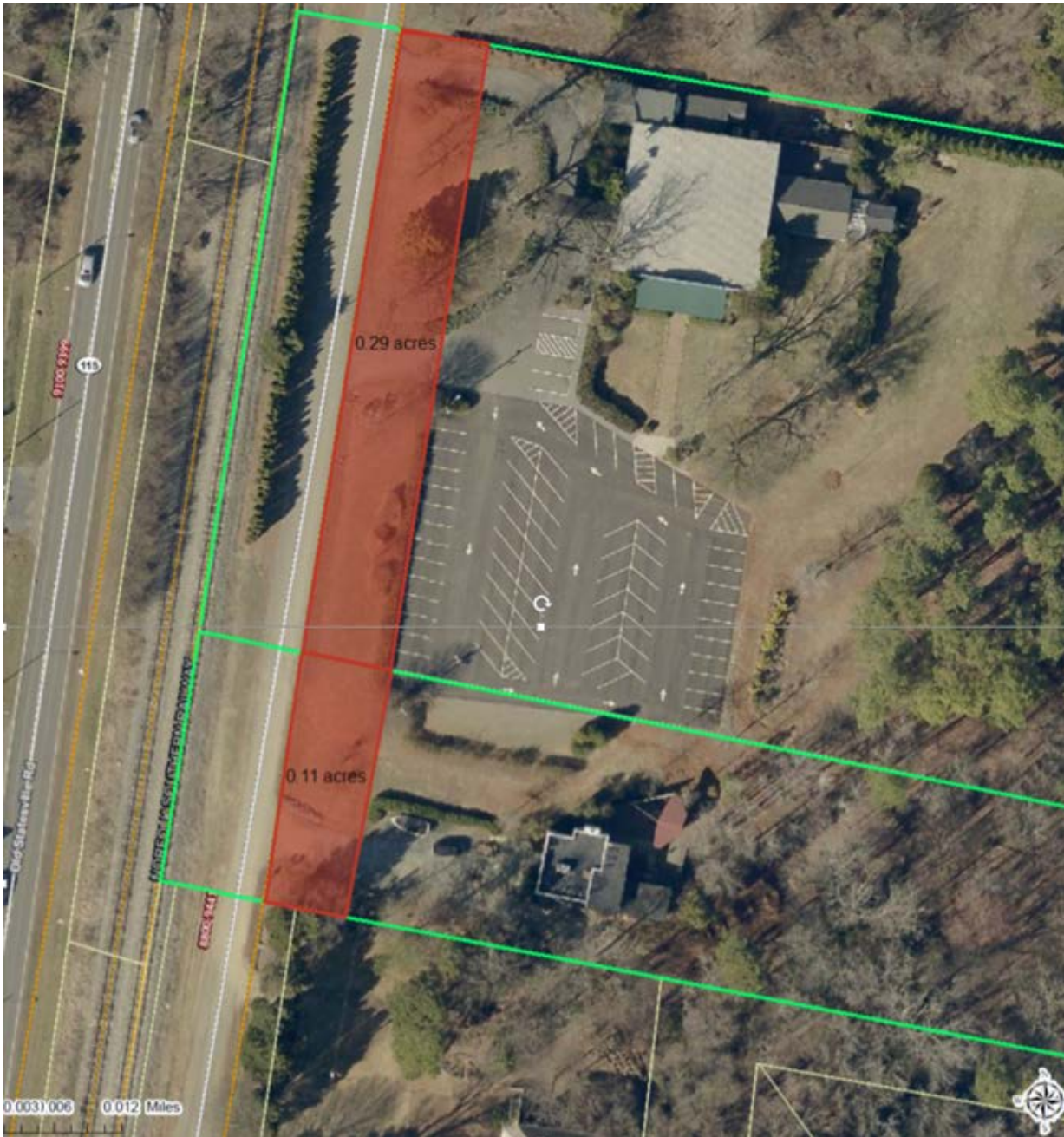
DATE: December 17, 2015

RE: Rezoning Petition #2016-031 – Luna Loco, LLC
(PID#027-191-16 and 027-191-22)

This is the first communication concerning this petition. We encourage staff and the Planning Commission to consider Mecklenburg County Park and Recreation Department's (MCPR) comments. We suggest that these comments be incorporated into the staff review notes and written into the Pre-Hearing Staff Analysis to the fullest extent possible. These steps should ensure MCPR's notes are conveyed to and incorporated by the petitioner during site plan revisions.

Parcels 027-191-16 and 027-191-22 are both located on the Mooresville to Charlotte Trail Corridor. This corridor has been included in the recently approved 2014 Mecklenburg County Greenway Master Plan Update.

MCPR requests from the petitioner the dedication and conveyance of a 40' wide dedication (measured from Norfolk Southern Railway ROW towards the existing parking lot and as shown on sketch below) to Mecklenburg County for greenway. The dedication and conveyance shall occur prior to the issuance of the first Certificate of Occupancy.



Copy to: James R. Garges, Director
W. Lee Jones, Division Director, Capital Planning Services
Gwen Cook, Greenway Planner, Capital Planning Services
Kevin Brickman, Planner, Capital Planning Services
Joe Frey, Project Manager, Charlotte Department of Transportation