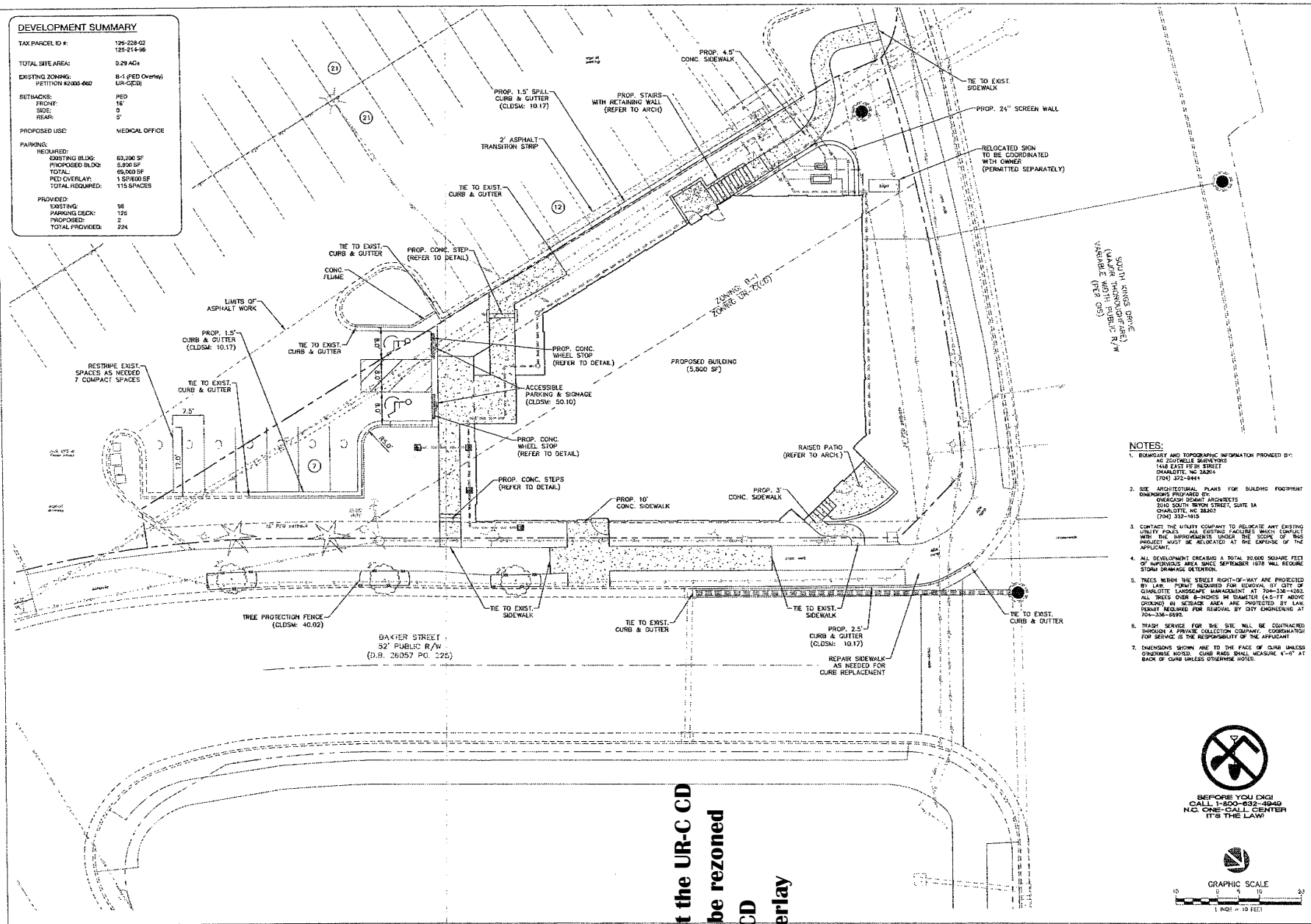
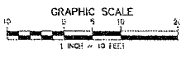


DEVELOPMENT SUMMARY	
TAX PARCEL ID #:	125-228-02 125-214-96
TOTAL SITE AREA:	0.29 AC±
EXISTING ZONING:	B-1 (PED Overlay) UR-C(0)
SETBACKS:	FRONT: 16' SIDE: 0' REAR: 5'
PROPOSED USE:	MEDICAL OFFICE
PARKING:	REQUIRED:
EXISTING BLDG:	62,000 SF
PROPOSED BLDG:	5,800 SF
TOTAL:	67,800 SF
PED OVERLAY:	1 SP/600 SF
TOTAL REQUIRED:	115 SPACES
PROVIDED:	98
PARKING DECK:	126
TOTAL PROVIDED:	224



- NOTES:**
- EXISTING AND TOPOGRAPHIC INFORMATION PROVIDED BY: AC ZOUTHELL SURVEYORS 1416 EAST PINE STREET CHARLOTTE, NC 28204 (704) 372-8844
  - SEE ARCHITECTURAL PLANS FOR BUILDING FOOTPRINT DIMENSIONS PROVIDED BY OVERARCH DESIGN ARCHITECTS 2134 SOUTH BRYAN STREET, SUITE 1A CHARLOTTE, NC 28203 (704) 332-1615
  - CONTACT THE UTILITY COMPANY TO RELOCATE ANY EXISTING UTILITY POLES OR EXISTING FACILITIES WHICH CONTACT WITH THE IMPROVEMENTS UNDER THE SCOPE OF THIS PROJECT MUST BE RELOCATED AT THE EXPENSE OF THE APPLICANT.
  - ALL DEVELOPMENT CREATED A TOTAL 20,000 SQUARE FEET OF IMPERVIOUS AREA SINCE SEPTEMBER 1978 WILL REQUIRE STORM DRAINAGE DETENTION.
  - TREES WITHIN THE STREET RIGHT-OF-WAY ARE PROTECTED BY LAW. TREES REQUIRED FOR REMOVAL BY CITY OF CHARLOTTE LANDSCAPE MANAGEMENT AT 704-336-1602. ALL TREES OVER 6-INCHES IN DIAMETER (4.5-FT ABOVE GROUND) IN SETBACK AREA ARE PROTECTED BY LAW. PERMIT REQUIRED FOR REMOVAL BY CITY ENGINEERING AT 704-336-8492.
  - TRASH SERVICE FOR THE SITE WILL BE CONTRACTED THROUGH A PRIVATE COLLECTION COMPANY. COORDINATION FOR SERVICE IS THE RESPONSIBILITY OF THE APPLICANT.
  - DIMENSIONS SHOWN ARE TO THE FACE OF CURB UNLESS OTHERWISE NOTED. CURB RISE SHALL MEASURE 4'-0" AT BACK OF CURB UNLESS OTHERWISE NOTED.

**Request the UR-C CD zoning be rezoned to B-1 CD PED overlay**



**URBAN DESIGN PARTNERS**  
1124-10 South Park • 704-334-2323  
Charlotte, NC 28204 • Fax 704-334-2362  
urban@urbanpartners.com



Goode Development  
Mr. Roy Goode  
1300 Baxter Street, Suite 270  
Charlotte, NC 28204

**Midtown Centre  
Building Two - Novant Office  
Site Plan**  
445 Kings Drive Charlotte, NC

NO. _____	DATE: BY: REVISIONS:
1. _____	DATE: BY: REVISIONS:
2. _____	DATE: BY: REVISIONS:
3. _____	DATE: BY: REVISIONS:
4. _____	DATE: BY: REVISIONS:
5. _____	DATE: BY: REVISIONS:
6. _____	DATE: BY: REVISIONS:
7. _____	DATE: BY: REVISIONS:
8. _____	DATE: BY: REVISIONS:
9. _____	DATE: BY: REVISIONS:
10. _____	DATE: BY: REVISIONS:
11. _____	DATE: BY: REVISIONS:
12. _____	DATE: BY: REVISIONS:
13. _____	DATE: BY: REVISIONS:
14. _____	DATE: BY: REVISIONS:
15. _____	DATE: BY: REVISIONS:
16. _____	DATE: BY: REVISIONS:
17. _____	DATE: BY: REVISIONS:
18. _____	DATE: BY: REVISIONS:
19. _____	DATE: BY: REVISIONS:
20. _____	DATE: BY: REVISIONS:
21. _____	DATE: BY: REVISIONS:
22. _____	DATE: BY: REVISIONS:
23. _____	DATE: BY: REVISIONS:
24. _____	DATE: BY: REVISIONS:
25. _____	DATE: BY: REVISIONS:
26. _____	DATE: BY: REVISIONS:
27. _____	DATE: BY: REVISIONS:
28. _____	DATE: BY: REVISIONS:
29. _____	DATE: BY: REVISIONS:
30. _____	DATE: BY: REVISIONS:
31. _____	DATE: BY: REVISIONS:
32. _____	DATE: BY: REVISIONS:
33. _____	DATE: BY: REVISIONS:
34. _____	DATE: BY: REVISIONS:
35. _____	DATE: BY: REVISIONS:
36. _____	DATE: BY: REVISIONS:
37. _____	DATE: BY: REVISIONS:
38. _____	DATE: BY: REVISIONS:
39. _____	DATE: BY: REVISIONS:
40. _____	DATE: BY: REVISIONS:
41. _____	DATE: BY: REVISIONS:
42. _____	DATE: BY: REVISIONS:
43. _____	DATE: BY: REVISIONS:
44. _____	DATE: BY: REVISIONS:
45. _____	DATE: BY: REVISIONS:
46. _____	DATE: BY: REVISIONS:
47. _____	DATE: BY: REVISIONS:
48. _____	DATE: BY: REVISIONS:
49. _____	DATE: BY: REVISIONS:
50. _____	DATE: BY: REVISIONS:
51. _____	DATE: BY: REVISIONS:
52. _____	DATE: BY: REVISIONS:
53. _____	DATE: BY: REVISIONS:
54. _____	DATE: BY: REVISIONS:
55. _____	DATE: BY: REVISIONS:
56. _____	DATE: BY: REVISIONS:
57. _____	DATE: BY: REVISIONS:
58. _____	DATE: BY: REVISIONS:
59. _____	DATE: BY: REVISIONS:
60. _____	DATE: BY: REVISIONS:
61. _____	DATE: BY: REVISIONS:
62. _____	DATE: BY: REVISIONS:
63. _____	DATE: BY: REVISIONS:
64. _____	DATE: BY: REVISIONS:
65. _____	DATE: BY: REVISIONS:
66. _____	DATE: BY: REVISIONS:
67. _____	DATE: BY: REVISIONS:
68. _____	DATE: BY: REVISIONS:
69. _____	DATE: BY: REVISIONS:
70. _____	DATE: BY: REVISIONS:
71. _____	DATE: BY: REVISIONS:
72. _____	DATE: BY: REVISIONS:
73. _____	DATE: BY: REVISIONS:
74. _____	DATE: BY: REVISIONS:
75. _____	DATE: BY: REVISIONS:
76. _____	DATE: BY: REVISIONS:
77. _____	DATE: BY: REVISIONS:
78. _____	DATE: BY: REVISIONS:
79. _____	DATE: BY: REVISIONS:
80. _____	DATE: BY: REVISIONS:
81. _____	DATE: BY: REVISIONS:
82. _____	DATE: BY: REVISIONS:
83. _____	DATE: BY: REVISIONS:
84. _____	DATE: BY: REVISIONS:
85. _____	DATE: BY: REVISIONS:
86. _____	DATE: BY: REVISIONS:
87. _____	DATE: BY: REVISIONS:
88. _____	DATE: BY: REVISIONS:
89. _____	DATE: BY: REVISIONS:
90. _____	DATE: BY: REVISIONS:
91. _____	DATE: BY: REVISIONS:
92. _____	DATE: BY: REVISIONS:
93. _____	DATE: BY: REVISIONS:
94. _____	DATE: BY: REVISIONS:
95. _____	DATE: BY: REVISIONS:
96. _____	DATE: BY: REVISIONS:
97. _____	DATE: BY: REVISIONS:
98. _____	DATE: BY: REVISIONS:
99. _____	DATE: BY: REVISIONS:
100. _____	DATE: BY: REVISIONS:

**C-3.0**

CLIENT

**Novant Health  
Urgent Care &  
Occupational Medicine**

445 S. Kings Drive  
Charlotte, NC 28204

Cheryl Vergata

PROJECT

**Exterior**

SPECS

**SIGN 2**

1/2" THICK PLATE ALUMINUM  
LOGO & LETTERS, STUD MOUNTED  
TO BUILDING EXTERIOR

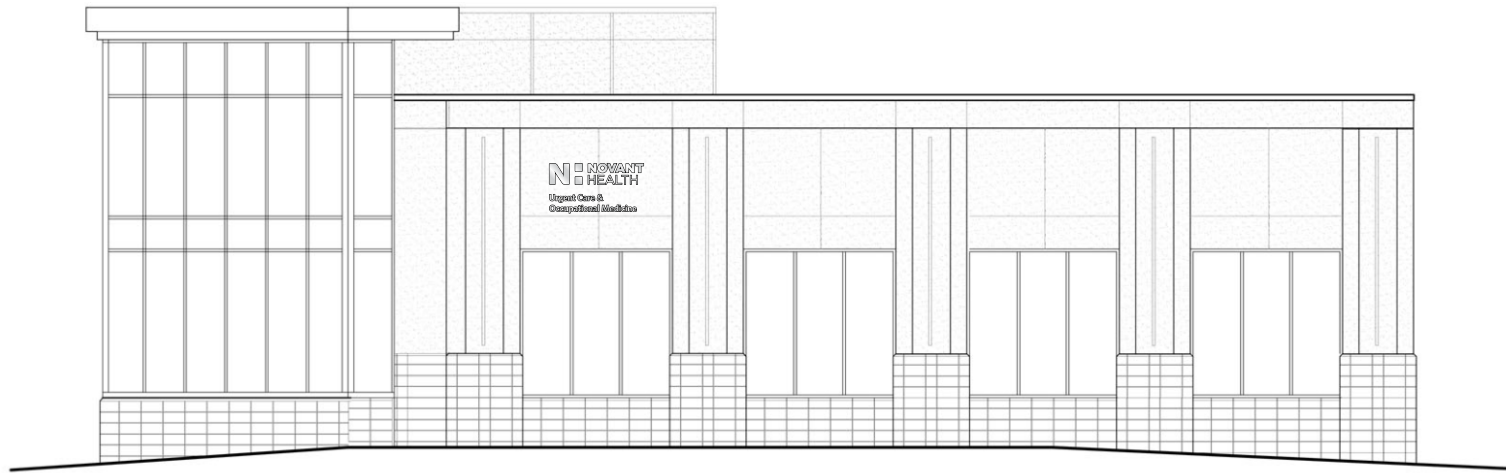


**RPSIGNS**

3108 Monroe Rd., Charlotte, NC 28205  
p: 704.344.8552 f: 704.375.8081  
www.rpsigns.net

Project Mgr.: L. Chamberlayne  
lucas@rpsigns.net

Designer: RDS • Date: 4.17.15



WALL

