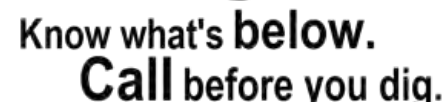


SU-2

Zoned: NS 150.12'
150.29(R7)

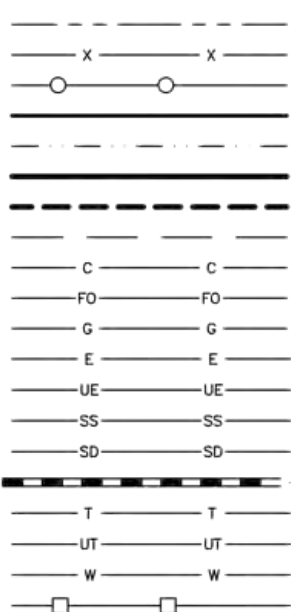
- ### SYMBOL LEGEND
- | | |
|--|-----------------------|
| | Area Inlet |
| | Benchmark |
| | Fire Hydrant |
| | Guy Wire |
| | Left Turn Arrow |
| | Light Pole |
| | Mailbox |
| | Manhole Cover |
| | Monument |
| | Pedestal |
| | Property Corner Found |
| | Property Corner Set |
| | Right Turn Arrow |
| | Sign |
| | Spot Elevation |
| | Spot Light |
| | Straight Arrow |
| | Traffic Signal Box |
| | Traffic Signal Pole |
| | Tree |
| | Utility Meter |
| | Utility Pole |
| | Valve |





BCH – Beech
BRC – Birch
BRAD – Bradford Pear
CED – Cedar
CHY – Cherry
CRP – Crepe Myrtle
CYP – Cypress
DGW – Dogwood
HIC – Hickory
HOL – Holly
LOC – Locust
MAG – Magnolia
MAP – Maple
PEC – Pecan
PIN – Pine
POP – Poplar
SYC – Sycamore
WLN – Walnut
WLC – Wild Cherry

- Easement
- Fence
- Guard Rail
- Property Line
- Property Line (not surveyed)
- Right-Of-Way
- Right-Of-Way (not surveyed)
- Setback
- Cable tv Line
- Fiber Optic Line
- Gas Line
- Power Line
- Power Line (underground)
- Sanitary Sewer Pipe
- Storm Drain Pipe
- Storm Drain Pipe >12"
- Telephone Line
- Telephone Line (underground)
- Water Line
- Wood Fence



this is to certify that this map or plat and the survey on which it is based were made in accordance with the 2011 minimum standard detail requirements for ALTA/ACSM Land Title Surveys, jointly established and adopted by ALTA and NSPS, and includes items 1, 2, 3, 4, 5, 6, 7(a), 7(b), 7(c), 8, 9, 10, 11(a), and 13 of table a thereof. the field work was completed on February 19, 2014.

Justin F. Cloninger
Professional Land Surveyor NCPLS L-4430

This is to certify that the subject property is Not located in a special flood hazard area as shown on maps prepared by the federal emergency management agency, federal insurance administration, dated March 2, 2004

SURVEYED AND MAPPED BY:
R.B. PHARR & ASSOCIATES, P.
SURVEYING & MAPPING
LICENSE NO: C-1471
420 HAWTHORNE LANE
CHARLOTTE, N.C. 28204
TEL. (704) 376-2186
FILE NO: W-4519
JOB NO: 80787

PRELIMINARY PLAT
NOT FOR RECORDATION
CONVEYANCE OR SALES

PROJECT NO.:#####

This is to certify that on the 19th day of February 20 14 an actual survey was made under my supervision of the property shown on this plat, and that the boundary lines and the improvements, if any, are as shown hereon. This plat meets the minimum standards of practice for land surveying in North Carolina, board rule .1600 (21 n.c. 56) and the ratio of precision does not exceed an error of closure of one (1) foot per 10,000 feet of perimeter surveyed nor 20 seconds times the square root of the number of angles turned.

Signed

A – Arc Length
 ASPH – Asphalt
 B – Chord Bearing
 CB – Chord Length
 CB – Catch Basin
 C.C. – Curb Cut
 CI – Curb Inlet
 C&G – Curb & Gutter
 C/O – Clean Out
 CONC – Concrete
 DB – Deed Book
 EB – Electric Box
 EM – Electric Meter
 EIP – Existing Iron Pipe
 EIR – Existing Iron Rod
 EN – Existing Nail
 ESMT – Easement
 FH – Fire Hydrant
 G – Gutter
 GRVL – Gravel
 GM – Gas Meter
 GP – Gate Post
 GV – Gas Valve
 GW – Guy Wire
 L – Arc Length
 LP – Light Pole
 MB – Map Book
 MW – Monitor Well
 O/HANG – Overhang
 PIN – Parcel Identification Number
 PB – Plat Book
 PG – Page
 R – Radius
 PVC – Plastic Pipe
 R/W – Right-Of-Way
 SC – Storm Drain Concrete Pipe
 SMH – Storm Drain Manhole
 SSMH – Sanitary Sewer Manhole
 (T) – Total
 TB – Telephone Box
 TC – Top Of Curb
 TCR – Traffic Control Box
 TERR – Terrace Cope
 TMH – Telephone Manhole
 TS – Traffic Sign
 TSP – Traffic Signal Post
 UB – Utility Box
 UP – Utility Pole
 UP – Utility Pole w/light
 UP – Utility Pole w/transformer
 WB – Water Box
 WM – Water Meter
 WMH – Water Manhole
 WW – Water Valve

	Area Inlet
	Benchmark
	Fire Hydrant
	Guy Wire
	Left Turn Arrow
	Light Pole
	Mailbox
	Manhole Cover
	Monument
	Pedestal
	Property Corner Found
	Property Corner Set
	Right Turn Arrow
	Sign
	Spot Elevation
	Spot Light
	Straight Arrow
	Traffic Signal Box
	Traffic Signal Pole
	Tree
	Utility Meter
	Utility Pole
	Valve



30 15 0 30 60

QuikTrip No. 1036

N. TRYON STREET & SALOME CHURCH ROAD
CITY OF CHARLOTTE, MECKLENBURG COUNTY, N.C.

© COPYRIGHT QUIKTRIP CORPORATION 2011
ANY UNAUTHORIZED USE, REPRODUCTION,
PUBLICATION, DISTRIBUTION, OR SALE IN
WHOLE OR IN PART, IS STRICTLY FORBIDDEN.

DIVISION:

VERSION: 001

DESIGNED BY:

DRAWN BY: N

REVIEWED BY
[REDACTED]

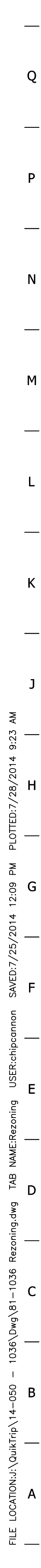
ORIGINAL ISSUE DATE: 7/28/14

SHEET TITLE:

SURVEY PLAN

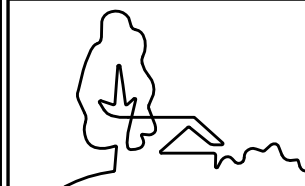
SHEET NUMBER

SU-4



SITE DATA (QUIKTRIP STORE 1036)	
TAX PARCEL ID #:	029-052-13 029-052-19 029-052-14 029-052-15 PORTION OF 029-052-11
TOTAL SITE/REZONING AREA:	±5.08 AC
EXISTING ZONING:	R-3 AND NS
PROPOSED ZONING:	B-1(CD)
PROPOSED USE:	SEE NOTES
DEVELOPMENT STANDARDS:	
SETBACK:	20' FROM ROW
SIDE:	0'
REAR:	10'
BUILDING AREA:	8,000 SF MAXIMUM
BUILDING HEIGHT:	25' MAXIMUM
VEHICULAR PARKING:	
REQUIRED:	32 (1 SP./250 SF)
PROPOSED:	60 (INC. 3 HANDICAP)

PROJECT NO.: 14-050



URBAN
DESIGN
PARTNERS

1318-e6 central ave. p 704.334.330
charlotte, nc 28205 f 704.334.330
urbandesignpartners.com
license no: R-0418

QuikTrip No. 1036

NORTH TRYON STREET AND SALOME CHURCH ROAD
CHARLOTTE, NC



© COPYRIGHT QUIKTRIP CORPORATION 2011
ANY UNAUTHORIZED USE, REPRODUCTION,
PUBLICATION, DISTRIBUTION, OR SALE IN
WHOLE OR IN PART, IS STRICTLY FORBIDDEN.

PROTOTYPE: P-79
DIVISION: CAROLINAS (81)
VERSION: 001
DESIGNED BY: UDP
DRAWN BY: UDP
REVIEWED BY: TK

[illegible]

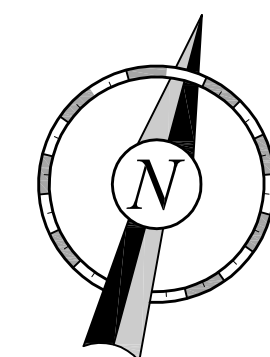
ORIGINAL ISSUE DATE: 07 28 14

SHEET TITLE:

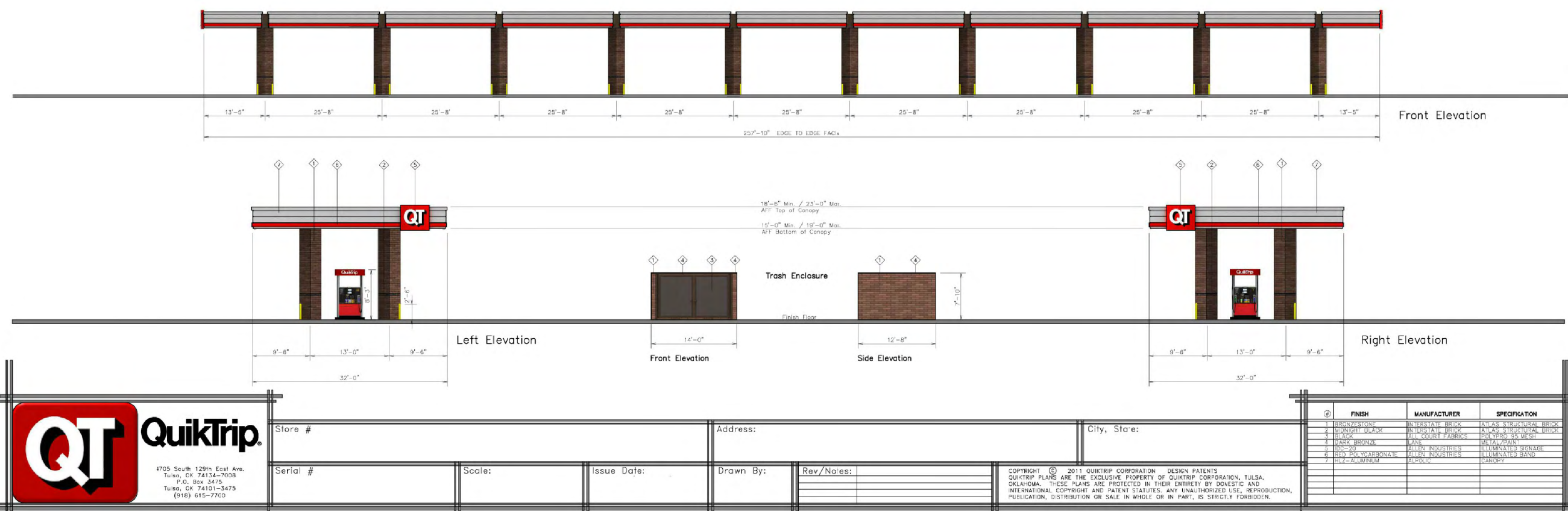
REZONING PLAN

SHEET NUMBER:

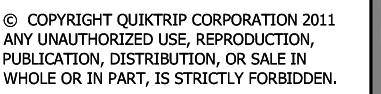
RZ-1.0



	1	2	3	4	5	6	7	8	9	10	11	12	13	14	15	
Q																
P																
N																
M																
L																
K																
J																
H																
G																
F																
E																
D																
C																
B																
A																
	1	2	3	4	5	6	7	8	9	10	11	12	13	14	15	



QuikTrip No. 1036
NORTH TRYON STREET AND SALOME CHURCH ROAD
CHARLOTTE, NC



PROTOTYPE: P-79
DIVISION: CAROLINAS (81)
VERSION: 001
DESIGNED BY: UDP
DRAWN BY: UDP
REVIEWED BY: TK

[illegible]

SHEET TITLE:

BUILDING ELEVATIONS AND
ILLUSTRATIVES

SHEET NUMBER:

RZ-3.0