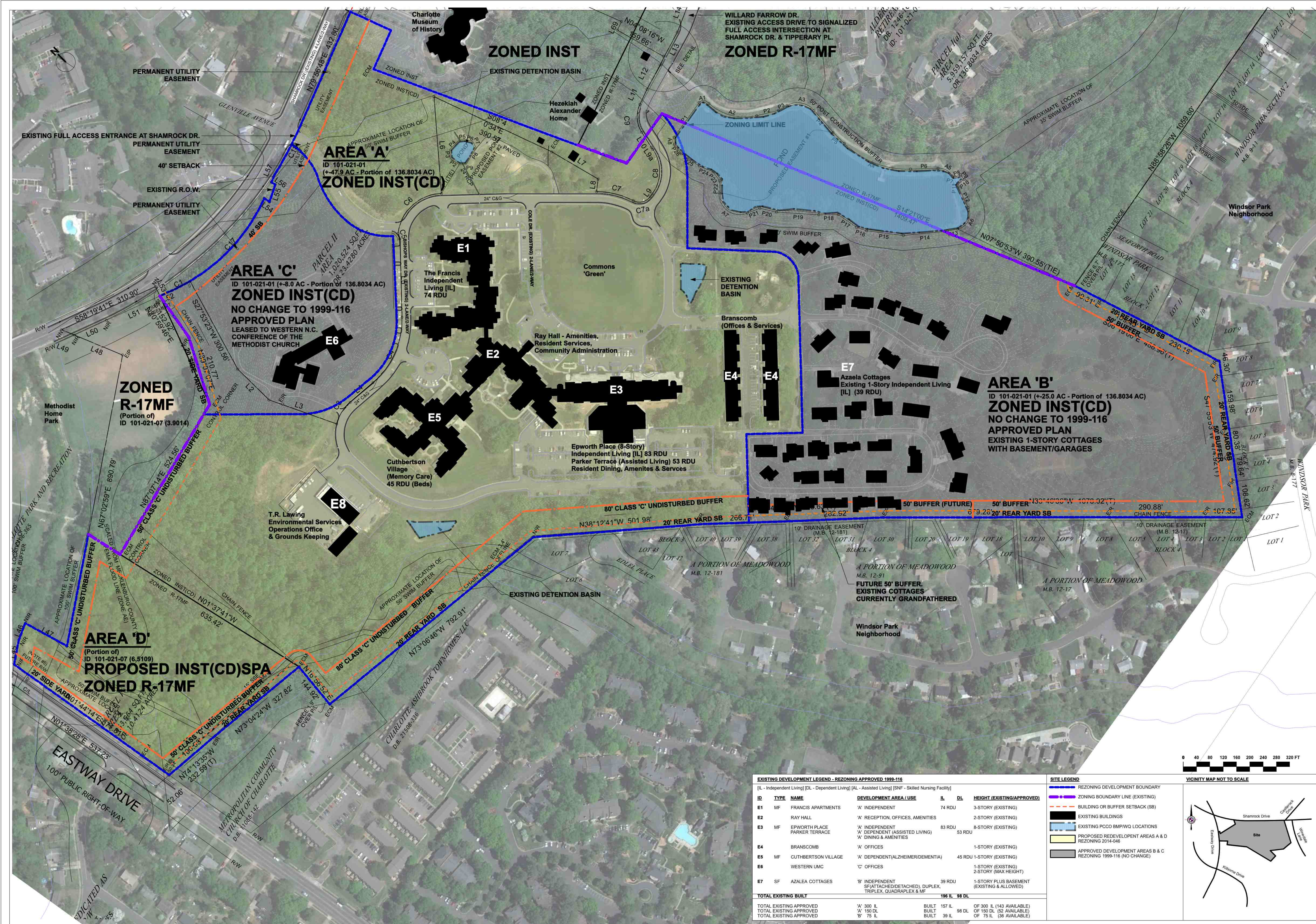
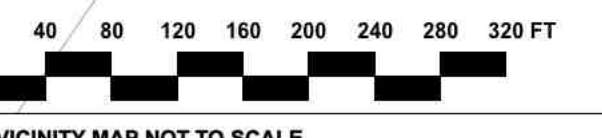


DATE: 04/28/2014
DESIGNED BY: Strook/Kelley
DRAWN BY: FSQ
CHECKED BY:
Q.C. BY: As Noted
SCALE: 14008.001
PROJECT #:
SHEET #: TSP001



EXISTING DEVELOPMENT LEGEND - REZONING APPROVED 1999-116						
[IL - Independent Living] [DL - Dependent Living] [AL - Assisted Living] [SNF - Skilled Nursing Facility]						
ID	TYPE	NAME	DEVELOPMENT AREA / USE	IL	DL	HEIGHT (EXISTING/APPROVED)
E1	MF	FRANCIS APARTMENTS	'A' INDEPENDENT	74	RDU	3-STORY (EXISTING)
E2		RAY HALL	'A' RECEPTION, OFFICES, AMENITIES			2-STORY (EXISTING)
E3	MF	EPWORTH PLACE PARKER TERRACE	'A' INDEPENDENT 'A' DEPENDENT (ASSISTED LIVING) 'A' DINING & AMENITIES	83	RDU	8-STORY (EXISTING)
E4		BRANSCOMB	'A' OFFICES			1-STORY (EXISTING)
E5	MF	CUTHBERTSON VILLAGE	'A' DEPENDENT (ALZHEIMER/DEMENTIA)	45	RDU	1-STORY (EXISTING)
E6		WESTERN UMC	'C' OFFICES			2-STORY (MAX HEIGHT)
E7	SF	AZALEA COTTAGES	'B' INDEPENDENT 'B' (ATTACHED/DETACHED), DUPLEX, TRIPLEX, QUADRAPLEX & MF	39	RDU	1-STORY PLUS BASEMENT (EXISTING & ALLOWED)
TOTAL EXISTING BUILT				196	IL 98 DL	
TOTAL EXISTING APPROVED				'A' 300 IL	BUILT 157 IL	OF 300 IL (143 AVAILABLE)
TOTAL EXISTING APPROVED				'B' 75 IL	BUILT 39 IL	OF 75 IL (36 AVAILABLE)

SITE LEGEND	
	REZONING DEVELOPMENT BOUNDARY
	ZONING BOUNDARY LINE (EXISTING)
	BUILDING OR BUFFER SETBACK (SB)
	EXISTING BUILDINGS
	EXISTING PCCO BMP/WQ LOCATIONS
	PROPOSED REDEVELOPMENT AREAS A & D REZONING 2014-046
	APPROVED DEVELOPMENT AREAS B & C REZONING 1999-116 (NO CHANGE)



A United Methodist Retirement Community

shook kelley

2151 Hawkins Street, Suite 400, Charlotte, NC 28203
704.377.8661 F 704.377.8662
www.shookkelley.com

Aldersgate CCRC - Rezoning Petition - INST (CD) SPA

3800 Shamrock Drive, Charlotte NC. 28215

Aldersgate CCRC - CONTINUING CARE RETIREMENT COMMUNITY

704.622.0230 p / 704. 532.7097 f; EMAIL - suzanne@aldersgateccrc.com

REZONING SUBMITTAL PETITION 2014-067

05/28/2014

DESIGNED BY: ShookKelley

CHECKED BY: FSQ

DATE: 05/28/2014

ISSUED: 05/28/2014

REVISIONS:

REZONING SUBMITTAL

EXISTING SITE PLAN

& NOTES

TSP002

As Noted

14008.001

PROJECT #:

SHEET #: