





**SheaHomes**

*Caring since 1881*

**Marvin Road Site - Amber Product**

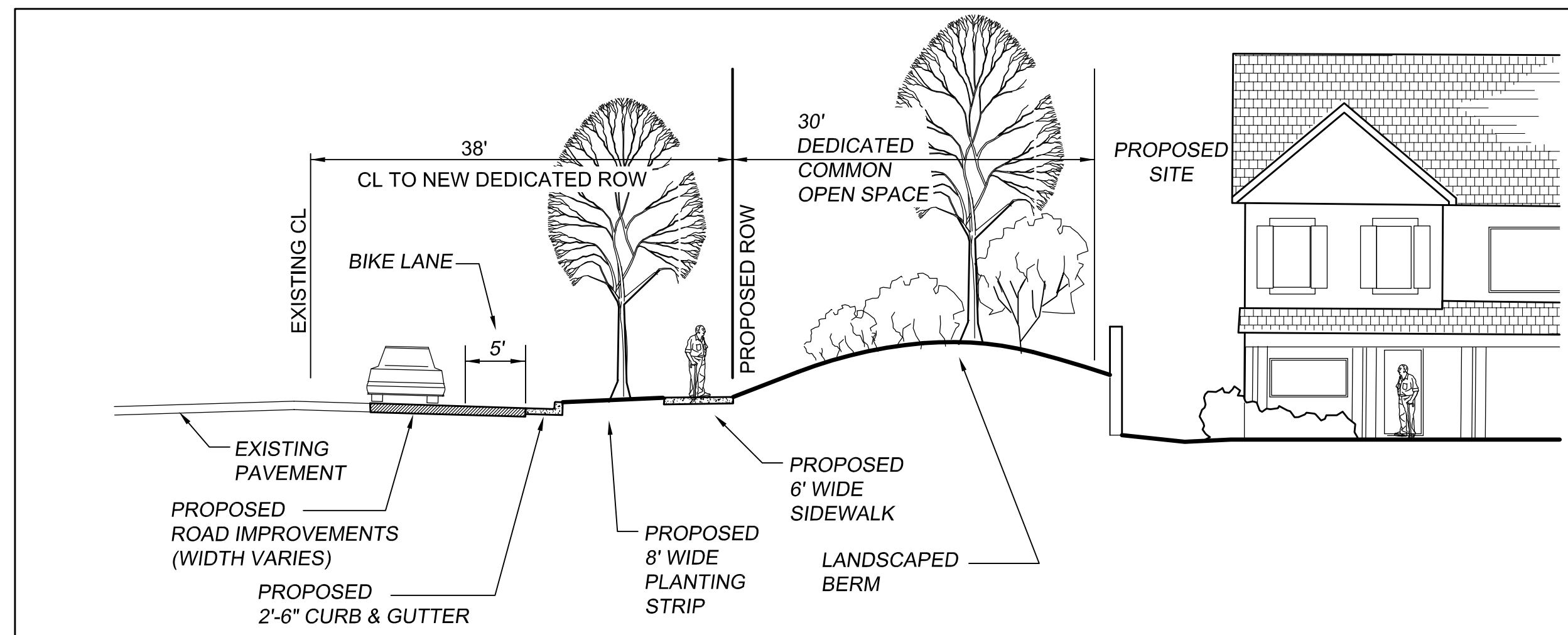
**PLAN 1 - ELEVATIONS**



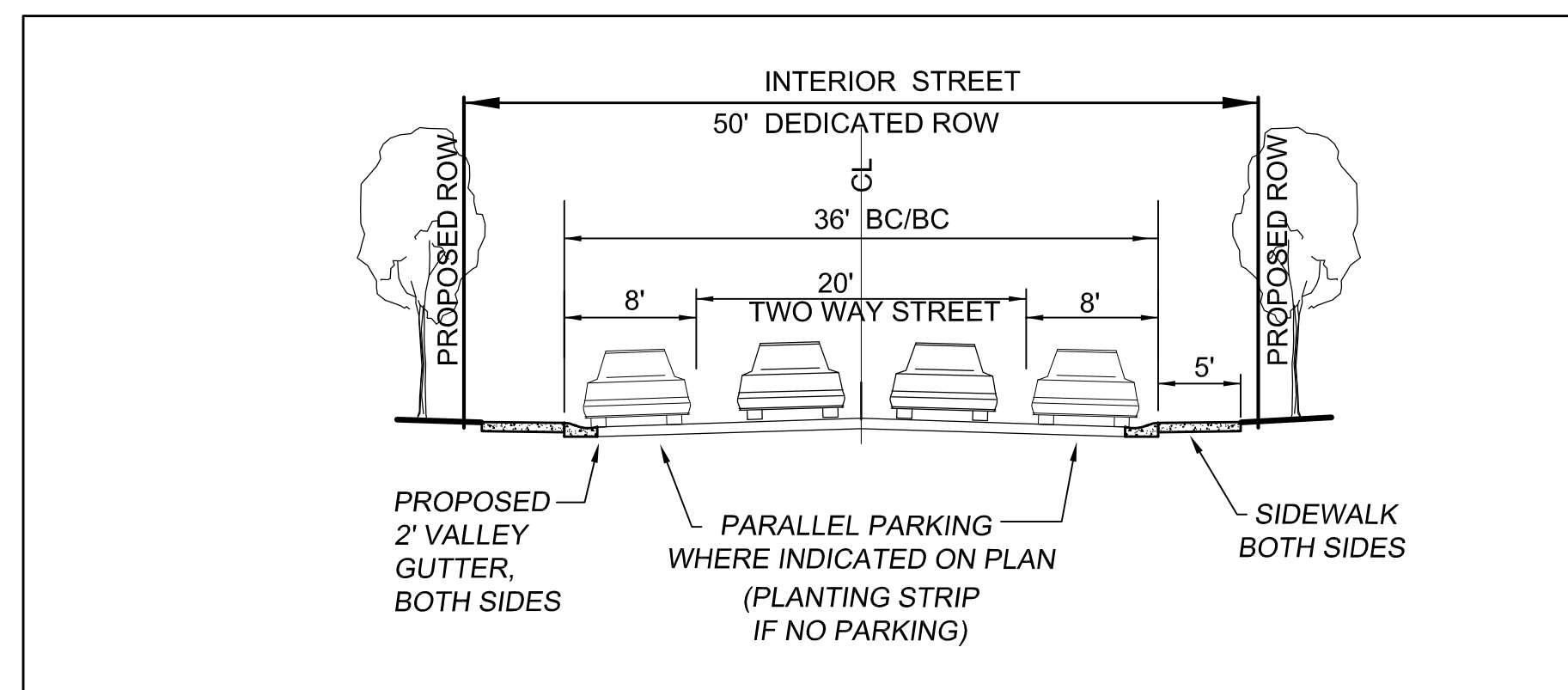
**ELEVATION A**



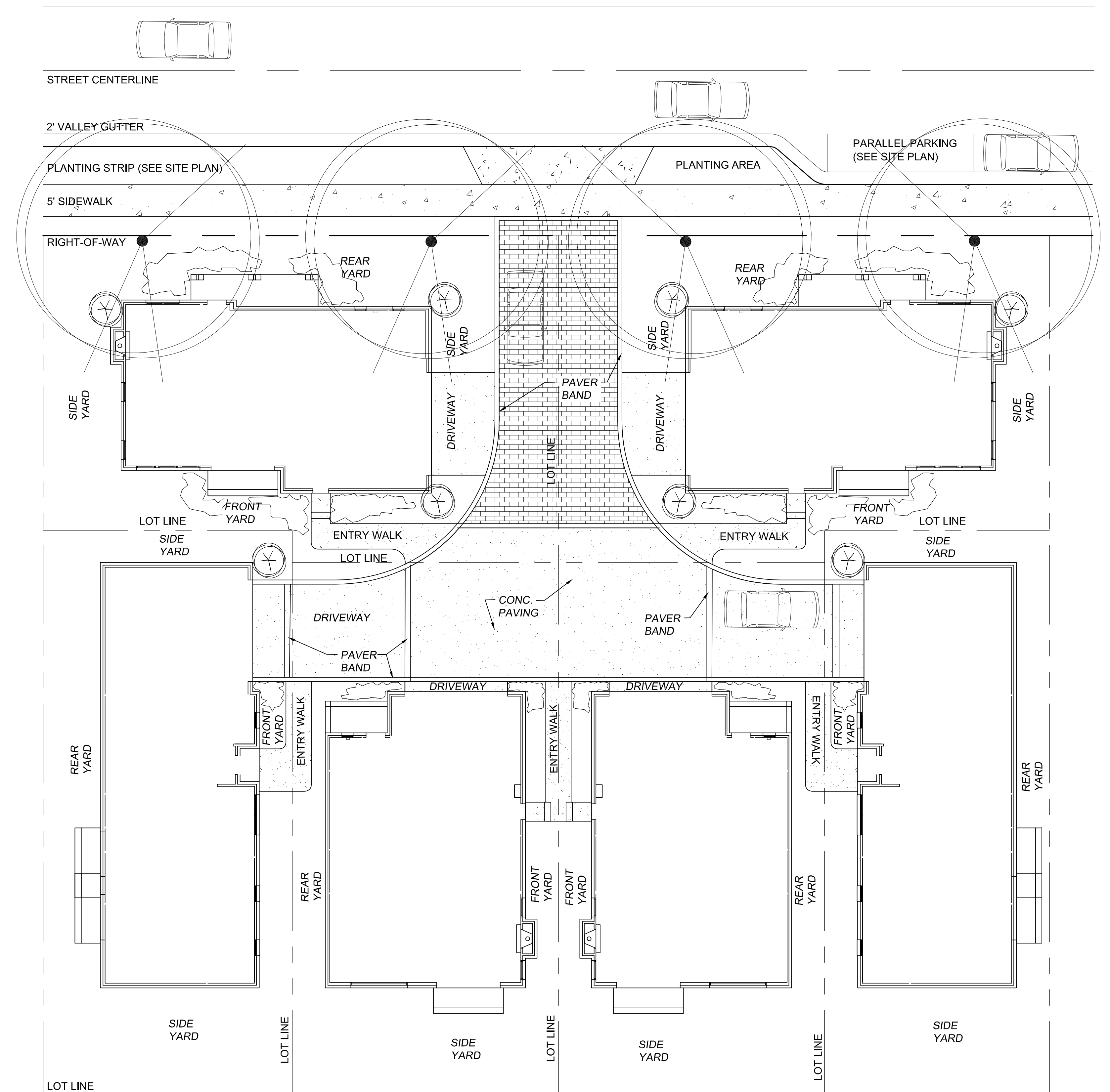
**ELEVATION B**



**MARVIN RD. SECTION**



**PROPOSED LOCAL RESIDENTIAL STREET**



**TYPICAL CLUSTER PLAN**

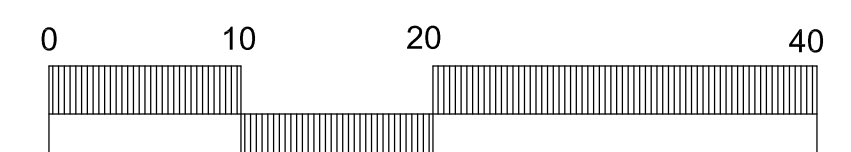
# **DETAILS** **REZONING PETITION 2013-091** CHARLOTTE, NORTH CAROLINA FOR **SHEA HOMES**

Project Manager  
LM  
 Drawn By  
SNH/RIT  
 Checked By  
LM  
 Date  
09/23/2013  
 Project Number  
13004

**DPR** landscape architecture  
 planning  
 civil engineering  
**DPR Associates, Inc.** | 420 Hawthorne Lane | Charlotte, NC 28204  
 ph. 704.332.1204 | fx. 704.332.1210 | www.dprassociates.net

REVISED DATE: 11/14/13

Scale:  
1"=10'



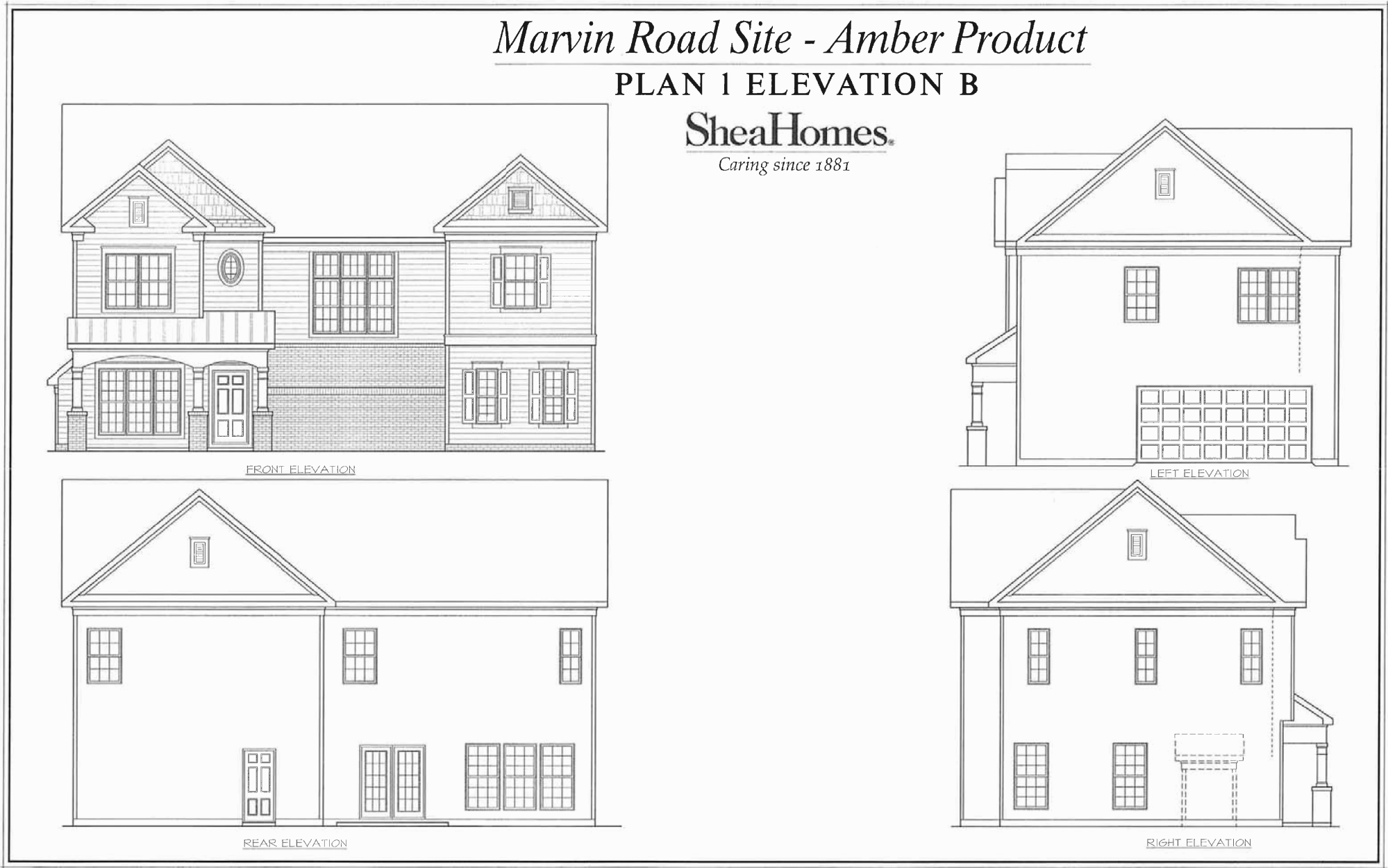
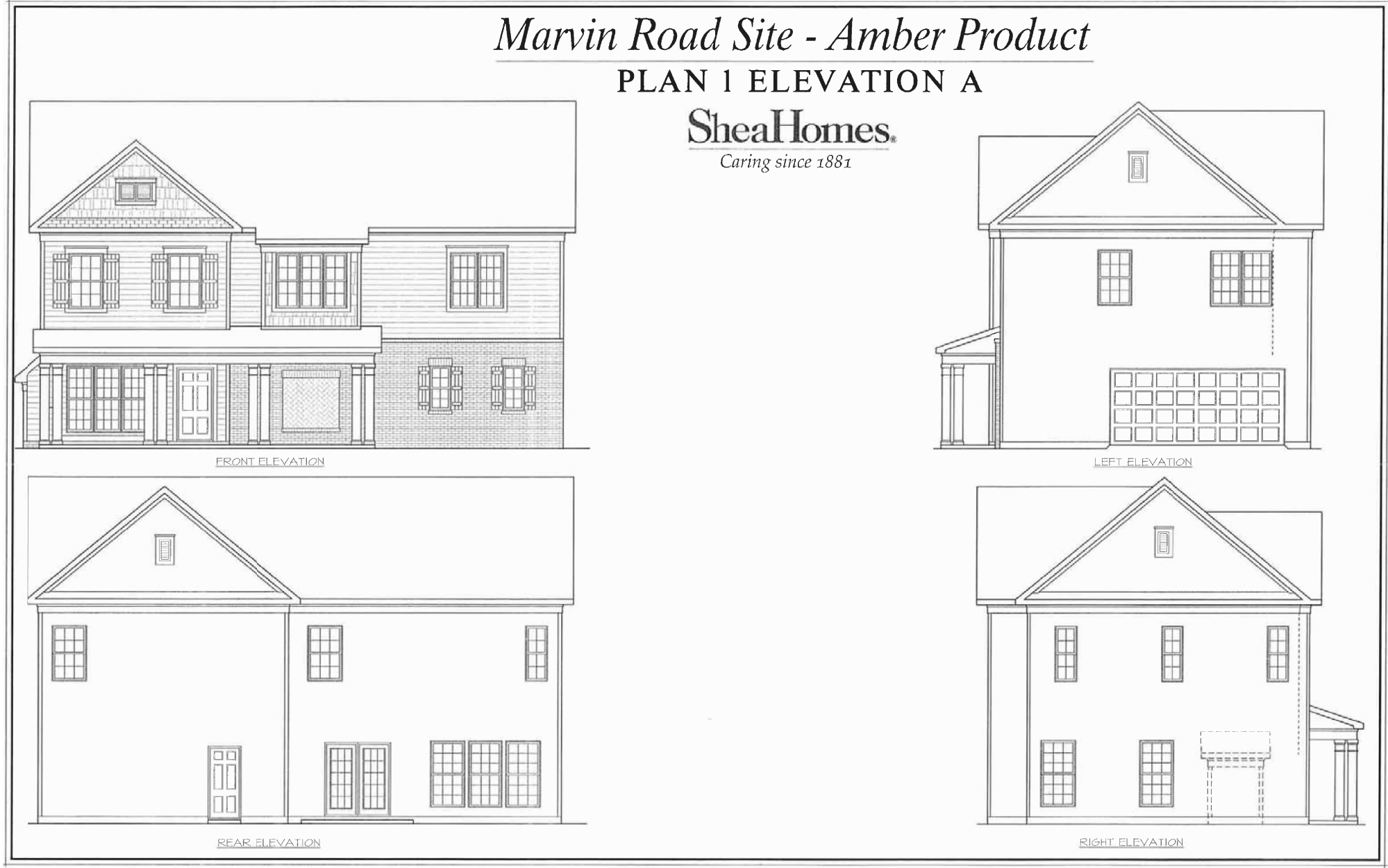
Sheet Number

**RZ-2**

Sheet 2 of 2

REZONING PETITION 2013-091 / 13004





ARCHITECTURAL ELEVATIONS  
REZONING PETITION 2013-091  
CHARLOTTE, NORTH CAROLINA  
FOR  
SHEA HOMES

Project Manager  
LM  
Drawn By  
SNH/RIT  
Checked By  
LM  
Date  
11/14/2013  
Project Number  
13004

**DPR** landscape architecture  
planning  
civil engineering  
**DPR Associates, Inc.** | 420 Hawthorne Lane | Charlotte, NC 28204  
ph. 704.332.1204 | fx. 704.332.1210 | [www.dprassociates.net](http://www.dprassociates.net)

Sheet Number

**RZ-A1**

Sheet 1 of 2