

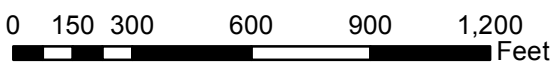
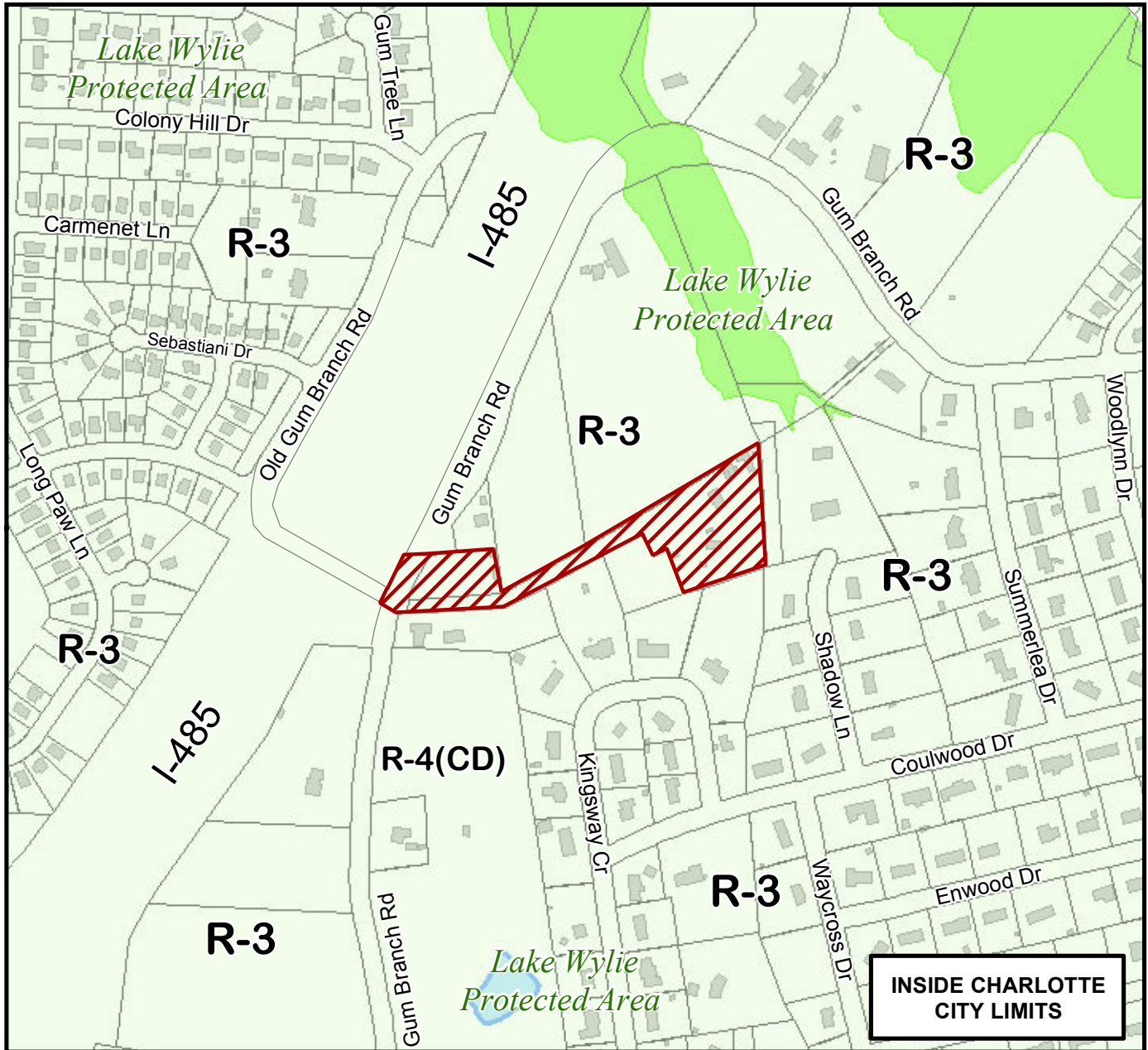
Petition #: **2013-018**

Petitioner: **Ralph Wood**

Zoning Classification (Existing): **R-3 (LWPA)**
(Single Family, Residential, up to 3 dwelling units per acre, Lake Wylie Protected Area)

Zoning Classification (Requested): **MUDD-O (LWPA)**
(Mixed Use Development District, Optional, Lake Wylie Protected Area)

Acreage & Location: Approximately 4.99 acres located on the east side of Gum Branch Road at the intersection of Gum Branch Road and Old Gum Branch Road.



Zoning Map #(s) **66**



Map Produced by the
Charlotte-Mecklenburg Planning Department
4-29-2013

