



MECKLENBURG COUNTY
Park and Recreation Department

MEMORANDUM

SENT ELECTRONICALLY THIS DATE
NO HARDCOPY TO FOLLOW

TO: Michael Cataldo, Associate Planner
Charlotte Mecklenburg Planning Department

FROM: Kevin Brickman, Planner
Capital Planning Division

DATE: August 16, 2012

RE: Rezoning Petition #2012-085 (Clems Branch Greenway)
Charlotte Mecklenburg Planning Commission (PID #223-531-05, 223-531-06)

This is the second communication concerning this property. We encourage staff and the Planning Commission to consider Mecklenburg County Park and Recreation Department's (MCPR) comments. We suggest that these comments be incorporated into the staff review notes and written into the Pre-Hearing Staff Analysis to the fullest extent possible. These steps should ensure MCPR's notes are conveyed to and incorporated by the petitioner during plan revision.

Located in the South Park District near the intersection of Johnston Road and Marvin Road on the north side of a tributary of Clems Branch, this parcel includes a greenway corridor that has been approved as part of the 2008 Greenway Master Plan.

MCPR requests the conveyance of property and a 40' access easement (min.) for a greenway as shown on the attached Exhibit 'A'.

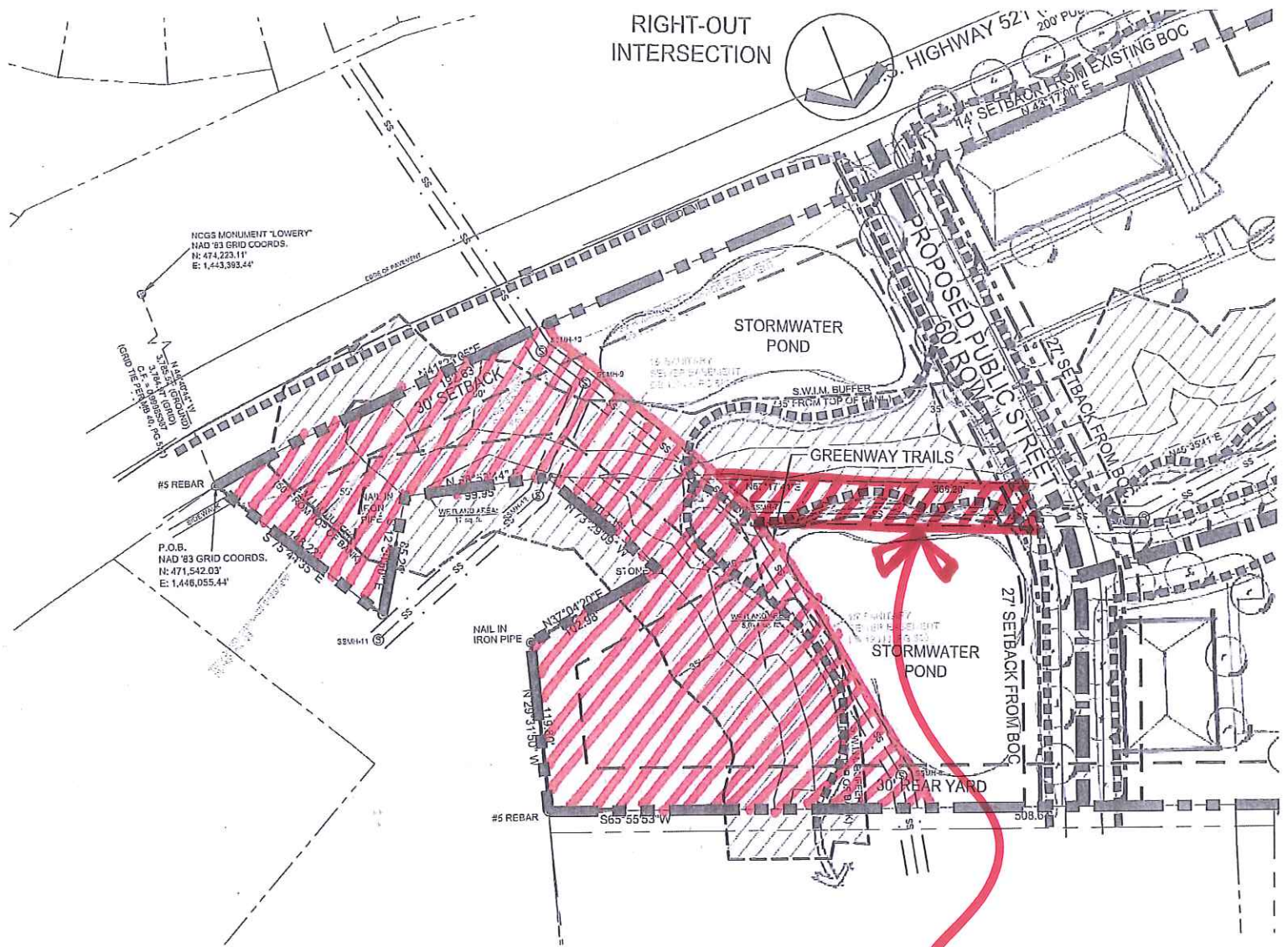
This conveyance should be completed by the issuance of the first Certificate of Occupancy.

We will be happy to discuss any questions or comments with the petitioner.

Copy to: James R. Garges, Director
W. Lee Jones, Division Director, Capital Planning Services
Gwen Cook, Greenway Planner
Jacqueline McNeil, Real Estate Coordinator

Attachment

EXHIBIT 'A'



40' ACCESS EASEMENT (MIN)

Rezoning Petition #2012-085

Convey hatched property area to Mecklenburg County for greenway.
Conveyance boundary is 5' off existing sanitary sewer easement to property lines as shown.