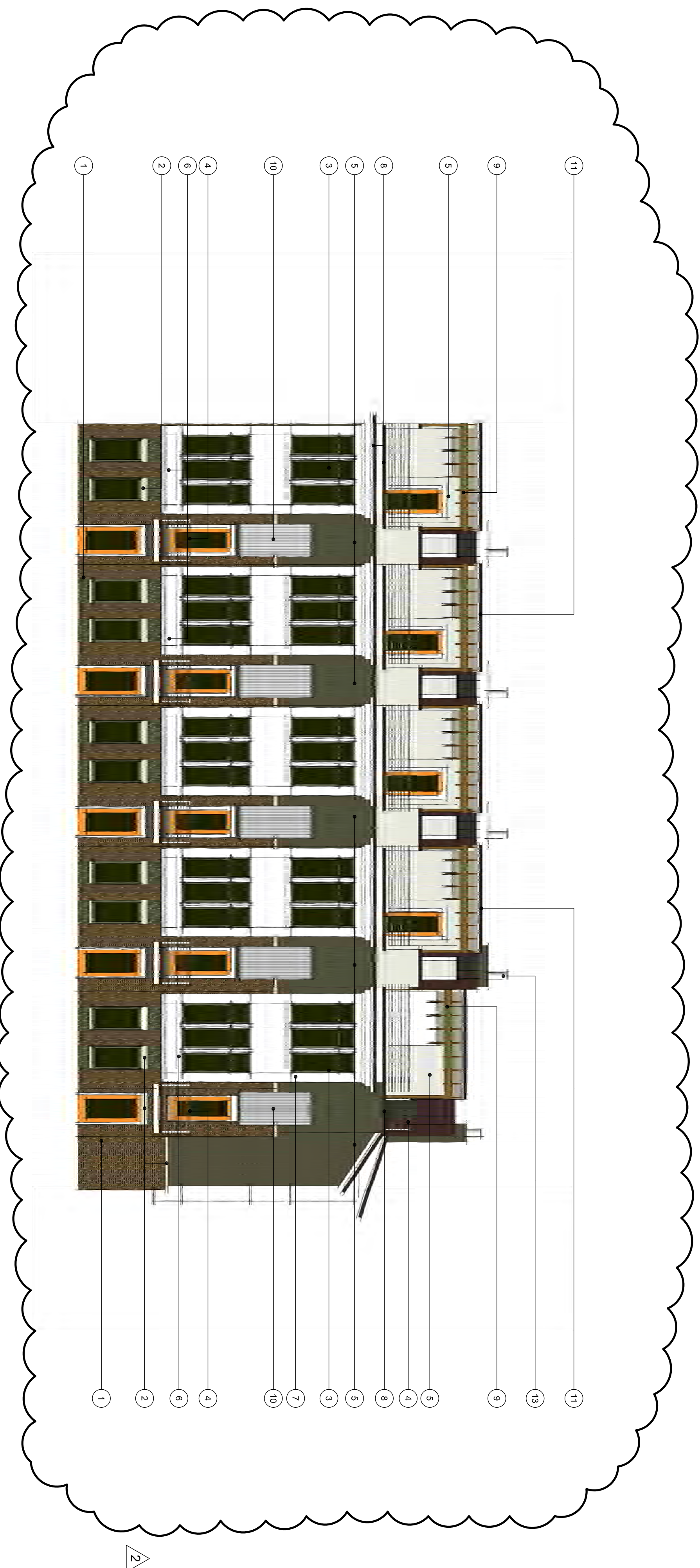




2	PHASE 1 (YADKIN AVE) SIDE ELEVATION
Scale	1/8" = 1'-0"

Scale | 1/8" = 1'-0"



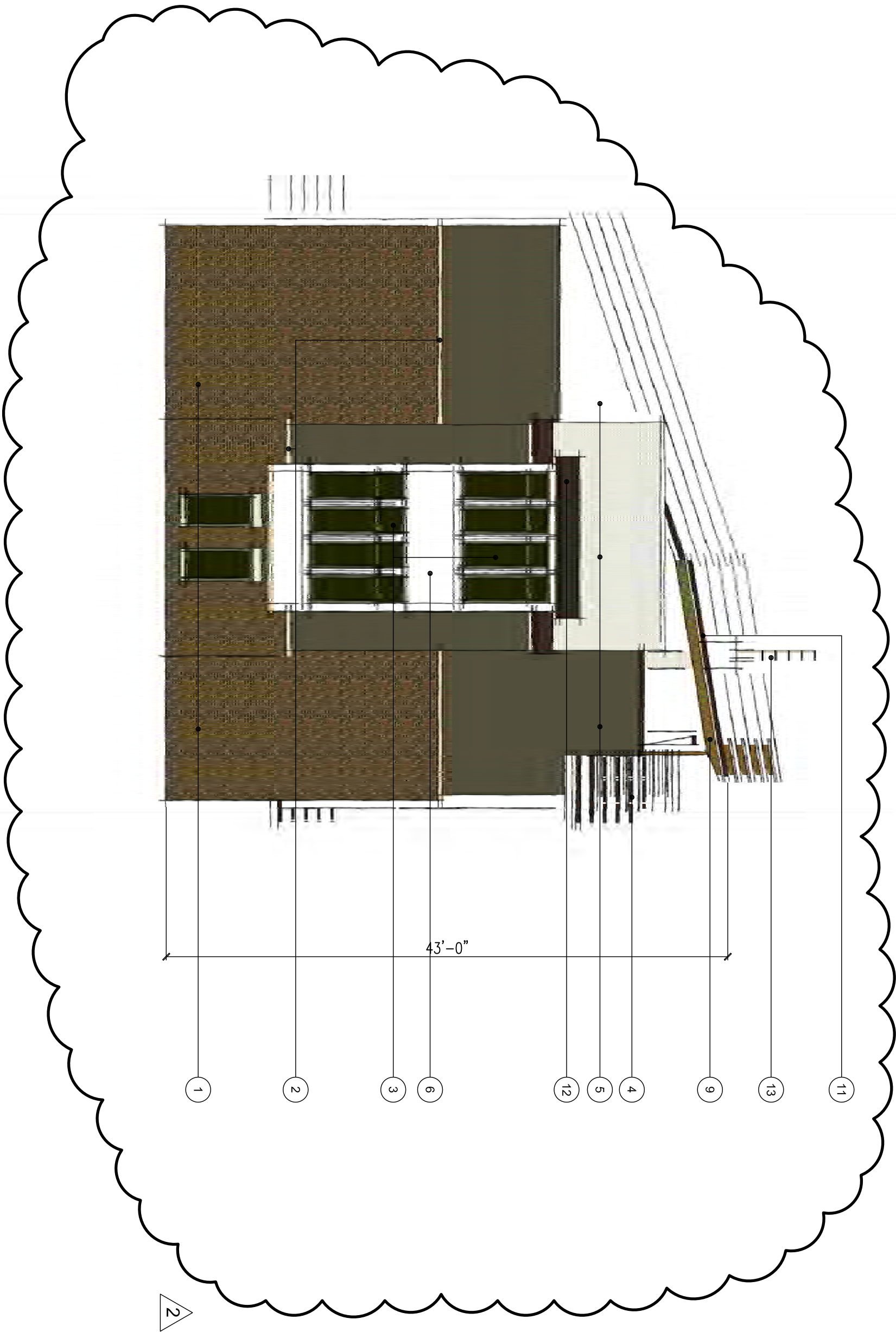
1 PHASE 1 - FRONT 35th STREET ELEVATION

Scale 1/8" = 1'-0"

PROPOSED PRELIMINARY  
ELEVATION MATERIALS

- 1 BROWN/RED BRICK VENER 7 SITE WALL WITH LIGHT MORTAR.
- 2 CAST STONE OF BRICK WALL CAP, HEADER, UNTEL. COLOR BY ARCHITECT
- 3 ALUMINUM/VINYL WINDOWS, TYP., COLOR BY ARCHITECT
- 4 ALUMINUM RAILING, TYP., COLOR BY ARCHITECT
- 5 PAINTED TIBER-CEMENT LAP SIDING, COLOR BY ARCHITECT
- 6 PAINTED TIBER-CEMENT TRIM, COLOR BY ARCHITECT
- 7 PAINTED FIBER-CEMENT WALL PANEL WITH TRIM, COLOR BY ARCHITECT
- 8 PRE-FINISHED ALUMINUM FLASHING, CORNING, WALL CAP ETC., TYP., COLOR BY ARCHITECT
- 9 STAINED PRESSURE TREATED WOOD, TYP., COLOR BY ARCHITECT
- 10 ORGANIC METAL ROOFING, COLOR BY ARCHITECT
- 11 STANDING SEAM METAL ROOFING, COLOR BY ARCHITECT
- 12 ASPHALT SHINGLES ROOF WITH VENTING COLOR TO MATCH. COLOR BY ARCHITECT
- 13 GALVANIZED METAL CHIMNEY STACK, TYP.
- 14 BRUSH FINISHED CONCRETE WALK, STEPS, ETC.





PROPOSED PRELIMINARY  
ELEVATION MATERIALS

- 1 BROWN/RED BRICK VENEER 7 SITE WALL WITH LIGHT MORTAR.
- 2 CAST STONE OR BRICK WALL CAP, HEADER, LINTEL. COLOR BY ARCHITECT
- 3 ALUMINUM/VINYL WINDOWS, TYP., COLOR BY ARCHITECT
- 4 ALUMINUM RAILING, TYP., COLOR BY ARCHITECT
- 5 PAINTED FIBER-CEMENT LAP SIDING. COLOR BY ARCHITECT
- 6 PAINTED FIBER-CEMENT TRIM. COLOR BY ARCHITECT
- 7 PAINTED FIBER-CEMENT WALL PANEL WITH TRIM. COLOR BY ARCHITECT
- 8 PRE-FINISHED ALUMINUM FLASHING, COPING, WALL CAP ETC. TYP., COLOR BY ARCHITECT
- 9 STAINED PRESSURE TREATED WOOD, TYP. COLOR BY ARCHITECT
- 10 CORRUGATED METAL ROOFING. COLOR BY ARCHITECT
- 11 STANDING SEAM METAL ROOFING. COLOR BY ARCHITECT
- 12 ASPHALT SHINGLES ROOF WITH VENTING COLOR TO MATCH COLOR BY ARCHITECT
- 13 GALVANIZED METAL CHIMNEY STACK, TYP.
- 14 BRUSH FINISHED CONCRETE WALK, STEPS, ETC.

2 PHASE 2 (ENTRANCE) SIDE ELEVATION

Scale: 1/8" = 1'-0"



1 PHASE 2 - FRONT YADKIN AVENUE ELEVATION

Scale: 1/8" = 1'-0"





## NoDa Multi-Family Townhomes

East 35th Street, Charlotte NC

Short Development

1809 The Plaza, Charlotte NC

## Short Development NoDa Multi-Family Rezoning

35th Street & Yadkin Avenue  
Charlotte, North Carolina

Project No. - 1113  
Issued - 02.07.2012

Revisions -

2 Staff Analysis Comments  
21 February 2012

**Ar1.0**

Preliminary Rendering



