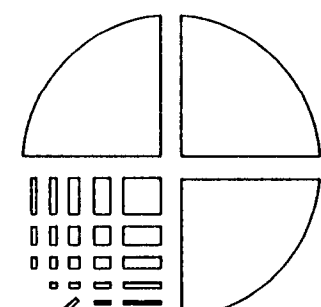


J. Dean Prevette
Professional Engineer

2923 South Tryon Street, Suite 120
CHARLOTTE, N.C. 28203 - 704 941 6613



PRELIMINARY PROPOSED SITE PLAN

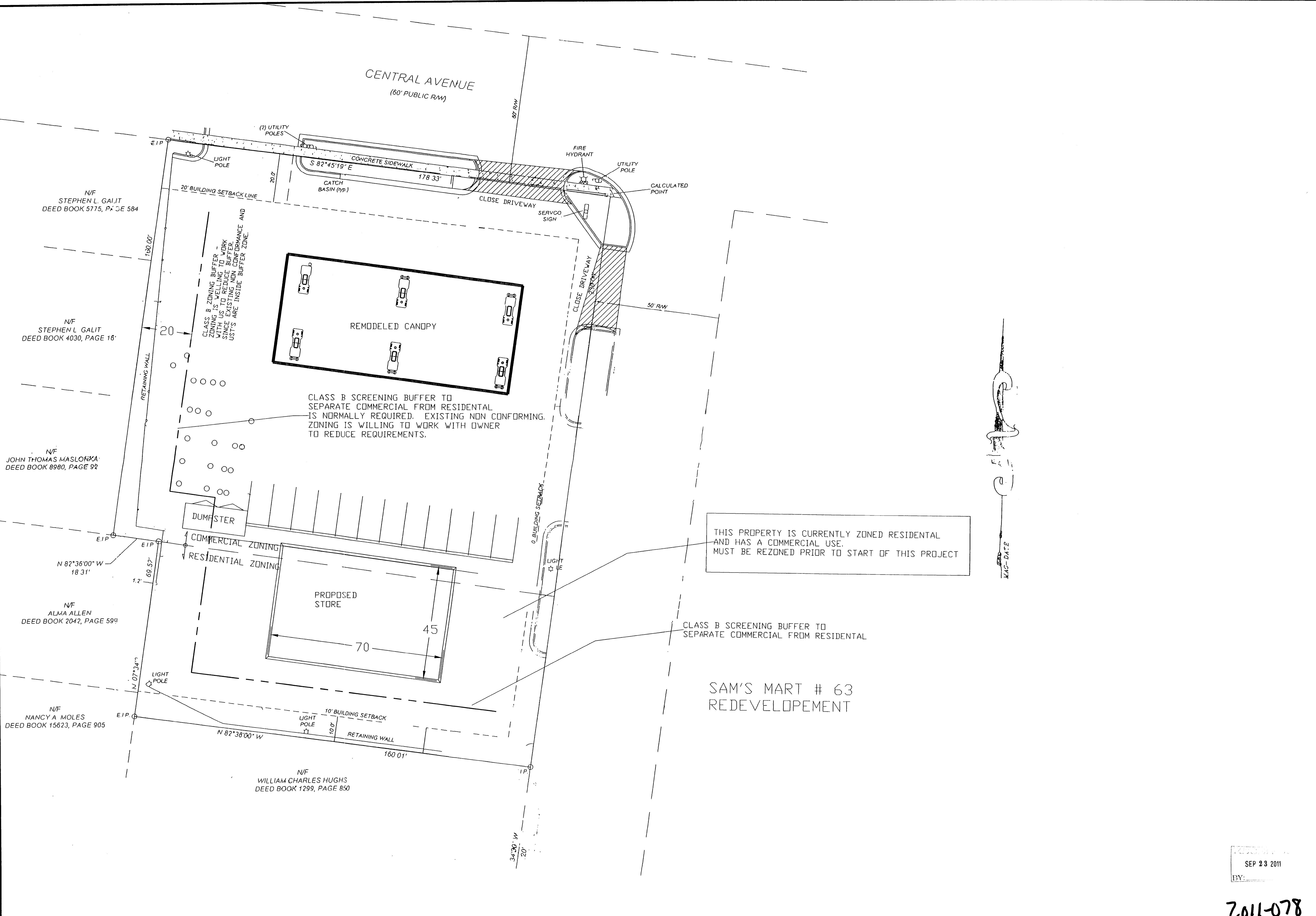
PROJECT TITLE
SAM'S MART # 63
1920 Central Avenue
Charlotte, NC

DATE: SEPT 14, 2011
DESIGN: FINAL
DRAWING NUMBER:
DRAWN BY: J. PREVETTE
CHECKED BY:

SHEET
SP
TOTAL # OF SHEETS
OF 1

SEP 23 2011

2011-078



THIS PROPERTY IS CURRENTLY ZONED RESIDENTIAL AND HAS A COMMERCIAL USE. MUST BE REZONED PRIOR TO START OF THIS PROJECT

CLASS B SCREENING BUFFER TO SEPARATE COMMERCIAL FROM RESIDENTIAL

SAM'S MART # 63 REDEVELOPMENT

DATE