







Elevation drawings for Bank of the Ozarks are for illustrative purposes only. The actual design of the buildings will include similar architectural features; however, specific details are subject to change. The actual combination & colors of the building materials (brick, moulding, stone, etc.) are also subject to change. All changes will be approved administratively by the Charlotte Planning staff. Elevations and building perspectives are representational of the building architecture only, reference site plans for all parking layout and site features.

© ai DESIGN GROUP Inc.





Elevation drawings for Bank of the Ozarks are for illustrative purposes only. The actual design of the buildings will include similar architectural features; however, specific details are subject to change. The actual combination & colors of the building materials (brick, moulding, stone, etc.) are also subject to change. All changes will be approved administratively by the Charlotte Planning staff. Elevations and building perspectives are representational of the building architecture only, reference site plans for all parking layout and site features.

© ai DESIGN GROUP Inc.



# Bank of the Ozarks

Charlotte, NC

## Schematic Elevation

03.31.2011

**ai** DESIGN GROUP  
ARCHITECTURE / INTERIORS  
600 South College St. Phone: (704) 731-8090  
Suite 200 Fax: (704) 731-8090  
Charlotte, NC 28202 www.aidginc.com





Elevation drawings for Bank of the Ozarks are for illustrative purposes only. The actual design of the buildings will include similar architectural features; however, specific details are subject to change. The actual combination & colors of the building materials (brick, moulding, stone, etc.) are also subject to change. All changes will be approved administratively by the Charlotte Planning staff. Elevations and building perspectives are representational of the building architecture only, reference site plans for all parking layout and site features.

© ai DESIGN GROUP Inc.



# Bank of the Ozarks

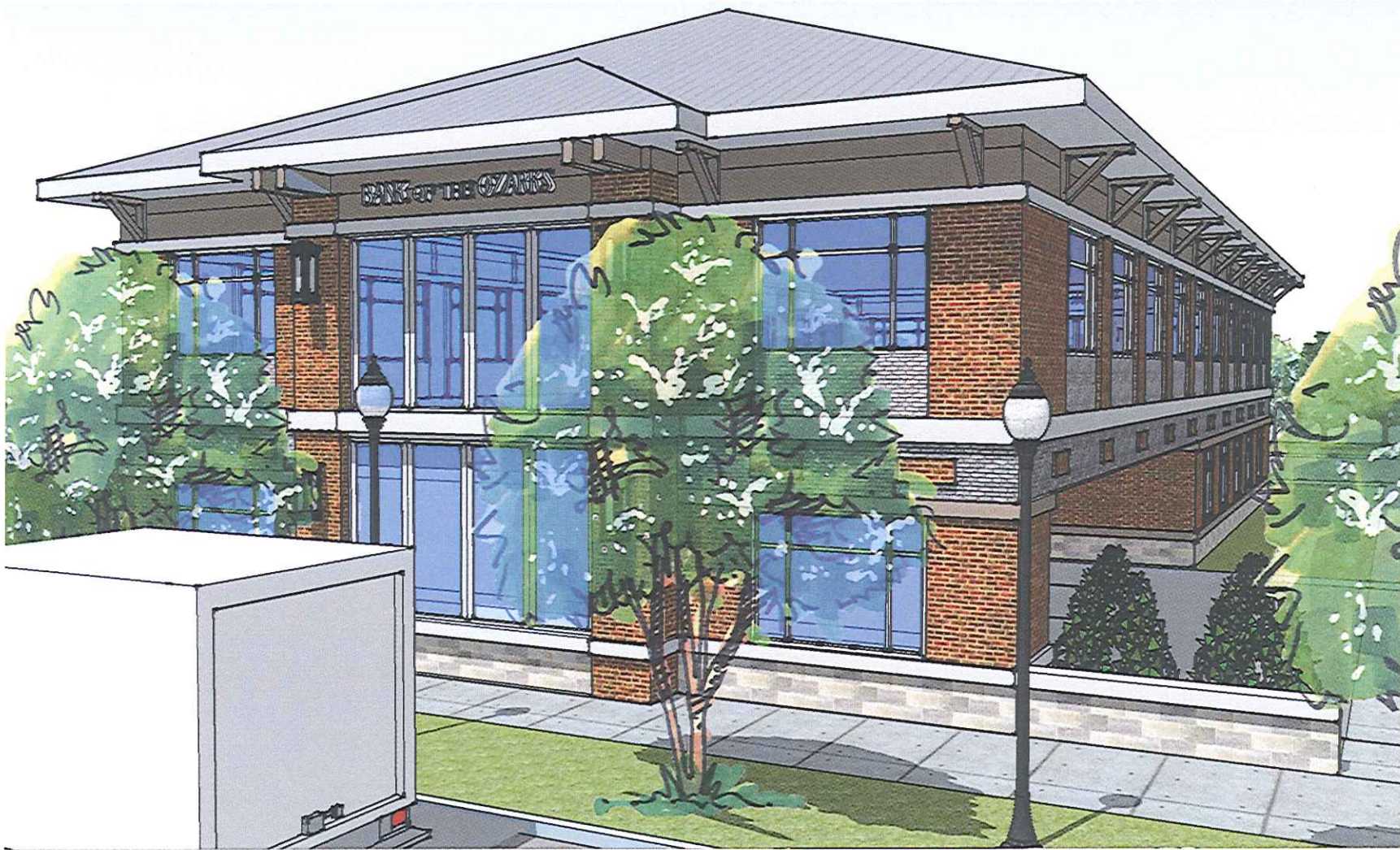
Charlotte, NC

## Schematic Vignette

03.31.2011

**ai** DESIGN GROUP  
ARCHITECTURE / INTERIORS  
500 South College St. Phone: (704) 731-8080  
Suite 200 Fax: (704) 731-8090  
Charlotte, NC 28202 www.ai-design.com





Elevation drawings for Bank of the Ozarks are for illustrative purposes only. The actual design of the buildings will include similar architectural features; however, specific details are subject to change. The actual combination & colors of the building materials (brick, moulding, stone, etc.) are also subject to change. All changes will be approved administratively by the Charlotte Planning staff. Elevations and building perspectives are representational of the building architecture only, reference site plans for all parking layout and site features.

© ai DESIGN GROUP Inc.



# Bank of the Ozarks

Charlotte, NC

## Schematic Vignette

03.31.2011

**ai** DESIGN GROUP  
ARCHITECTURE / INTERIORS  
500 South College St. Phone: (704) 731-0080  
Suite 200 Fax: (704) 731-8090  
Charlotte, NC 28202 www.aidgnc.com





Elevation drawings for Bank of the Ozarks are for illustrative purposes only. The actual design of the buildings will include similar architectural features; however, specific details are subject to change. The actual combination & colors of the building materials (brick, moulding, stone, etc.) are also subject to change. All changes will be approved administratively by the Charlotte Planning staff. Elevations and building perspectives are representational of the building architecture only, reference site plans for all parking layout and site features.

© ai DESIGN GROUP Inc.



# Bank of the Ozarks

Charlotte, NC

## Schematic Vignette

03.31.2011

**ai** DESIGN GROUP  
ARCHITECTURE / INTERIORS  
500 South College St. Phone: (704) 731-8080  
Suite 200 Fax: (704) 731-8090  
Charlotte, NC 28202 www.aiidgmc.com