

Petition #: **2011-028**

Petitioner: Charlotte-Mecklenburg Planning Department

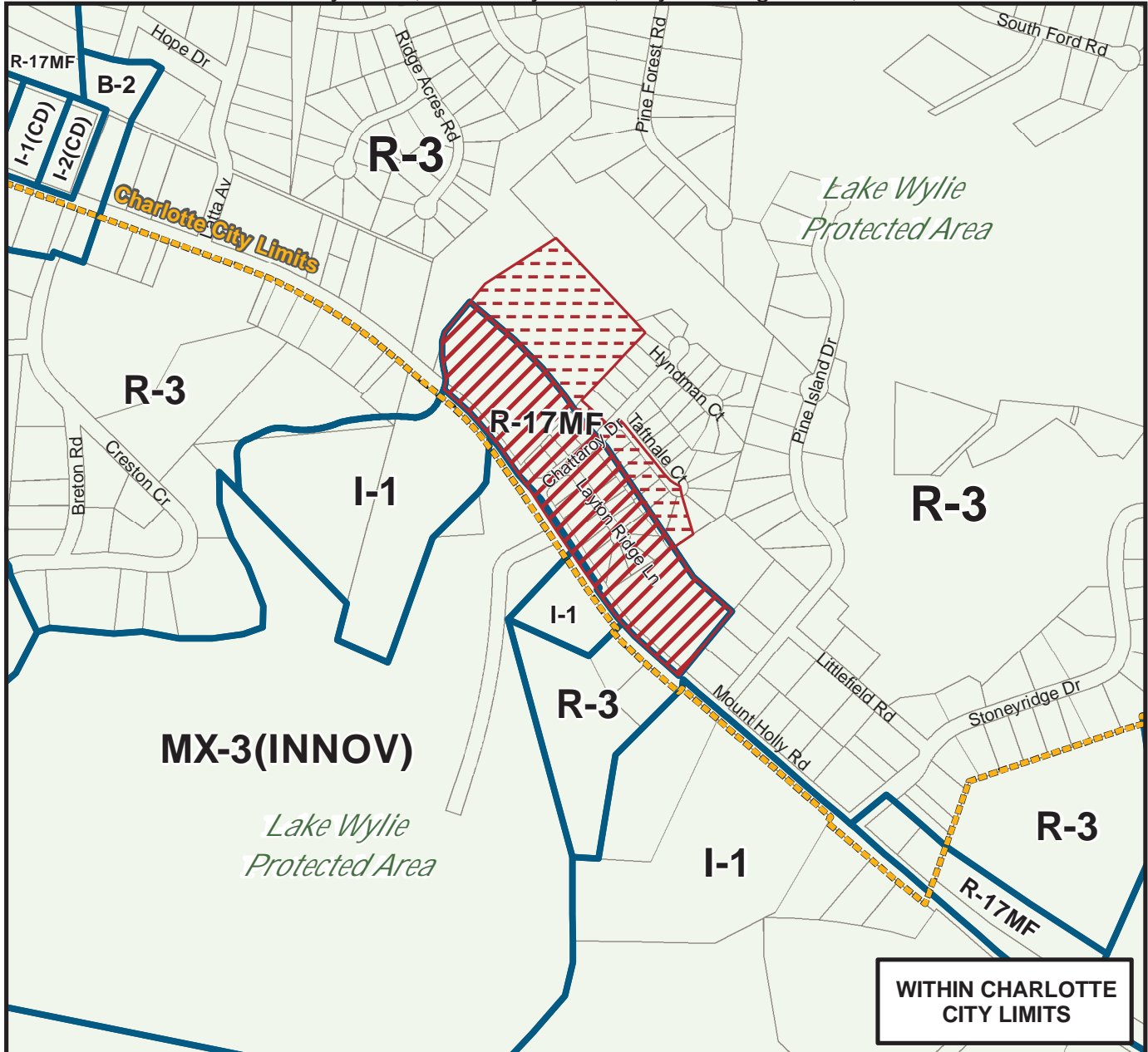
Zoning Classification (Existing): R-17MF (LWPA) and R-3 (LWPA)

(Multi-Family Residential, up to 17 dwelling units per acre, Lake Wylie Protected Area and Single Family Residential, up to 3 dwelling units per acre, Lake Wylie Protected Area)

Zoning Classification (Requested): R-8 (LWPA)

(Single Family Residential, up to 8 dwelling units per acre, Lake Wylie Protected Area)

Acreage & Location : Properties totaling approximately 17.29 acres generally fronting Mount Holly Road, Chattaroy Drive, Layton Ridge Lane, and Taftnale Court.



0 150 300 600 900 1,200 Feet

Zoning Map #(s) **63, 66**

Map Produced by the  
Charlotte-Mecklenburg Planning Department  
7-1-2011

