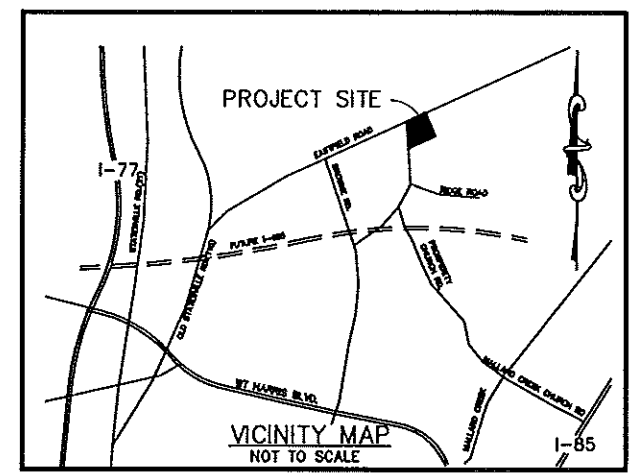


MAP BOOK 40 PAGE 641

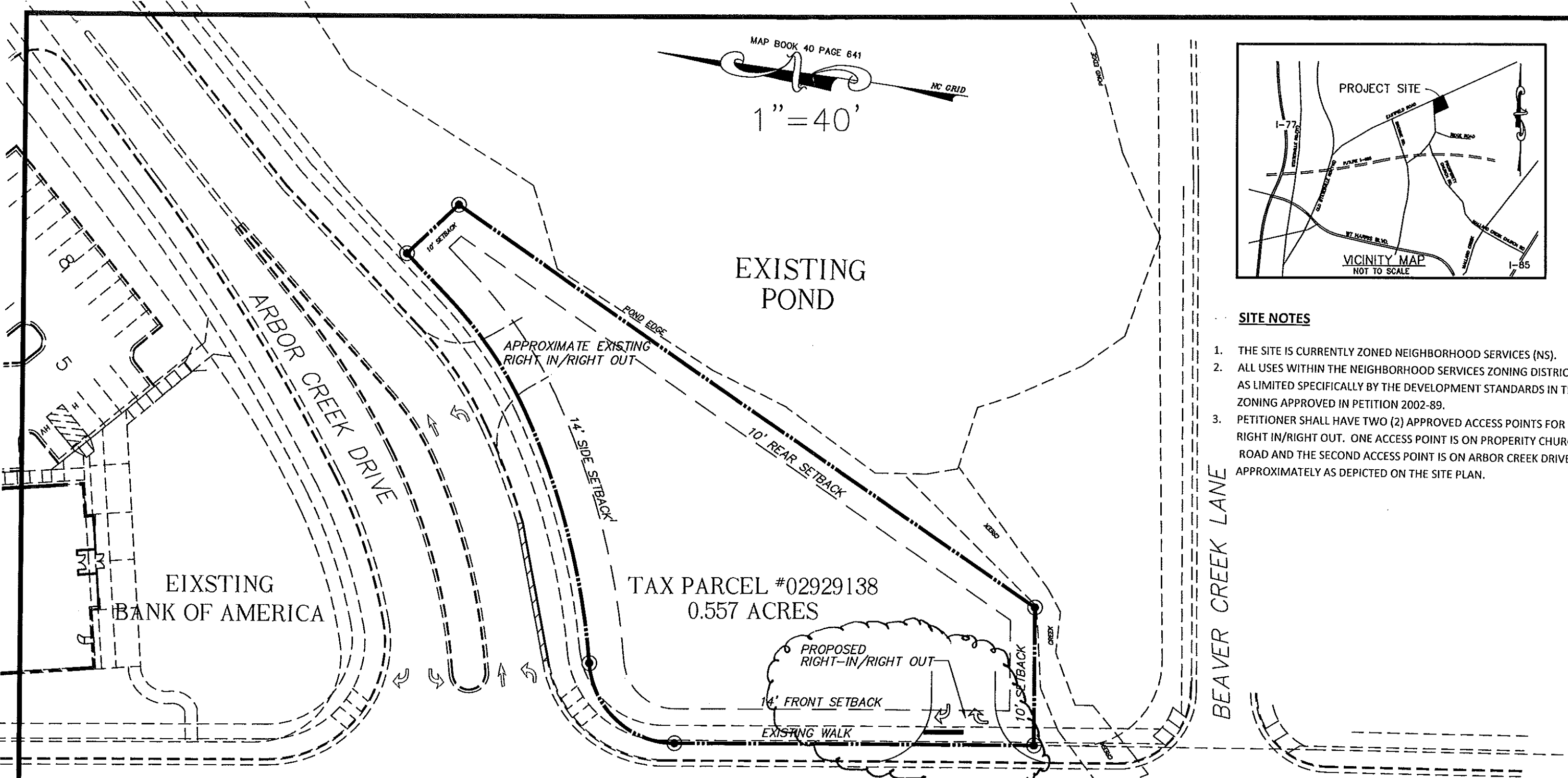
1" = 40'

NC GRID



SITE NOTES

1. THE SITE IS CURRENTLY ZONED NEIGHBORHOOD SERVICES (NS).
2. ALL USES WITHIN THE NEIGHBORHOOD SERVICES ZONING DISTRICT AS LIMITED SPECIFICALLY BY THE DEVELOPMENT STANDARDS IN THE ZONING APPROVED IN PETITION 2002-89.
3. PETITIONER SHALL HAVE TWO (2) APPROVED ACCESS POINTS FOR RIGHT IN/RIGHT OUT. ONE ACCESS POINT IS ON PROSPERITY CHURCH ROAD AND THE SECOND ACCESS POINT IS ON ARBOR CREEK DRIVE APPROXIMATELY AS DEPICTED ON THE SITE PLAN.



TAX PARCEL #02929138
 EASTFIELD VILLAGE
 OWNER CAMBRIDGE-EASTFIELD, LLC
 831 EAST MOREHEAD STREET, SUITE 245, CHARLOTTE, NC 28202

CITY OF CHARLOTTE
 MECKLENBURG COUNTY, NORTH CAROLINA

JANUARY 24, 2011