

Charlotte Health Care Center

1735 Toddville Road, Charlotte, NC

Topographical Survey

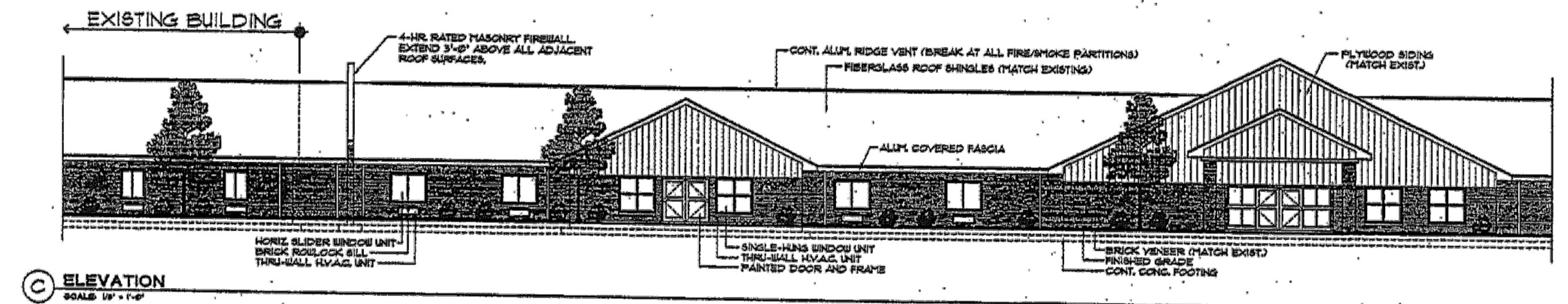
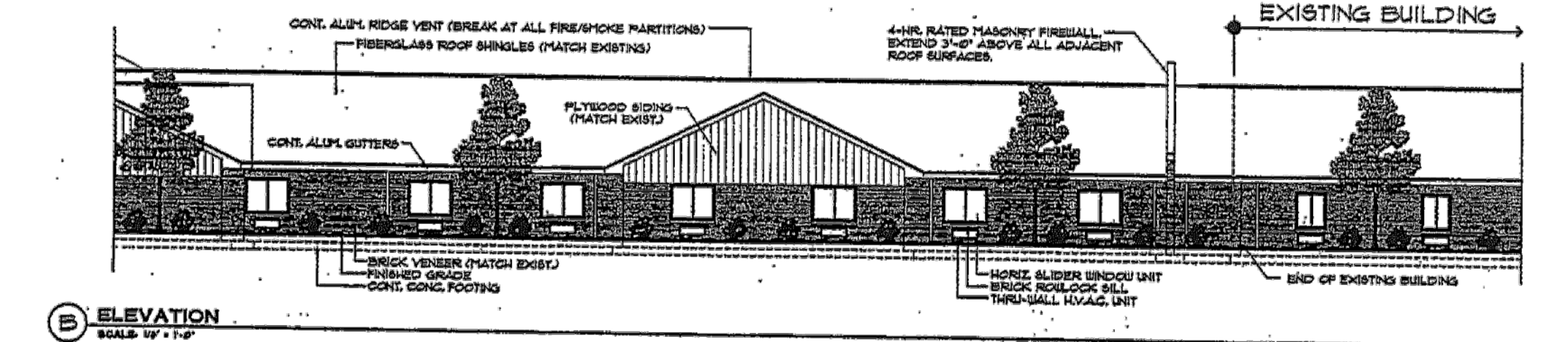
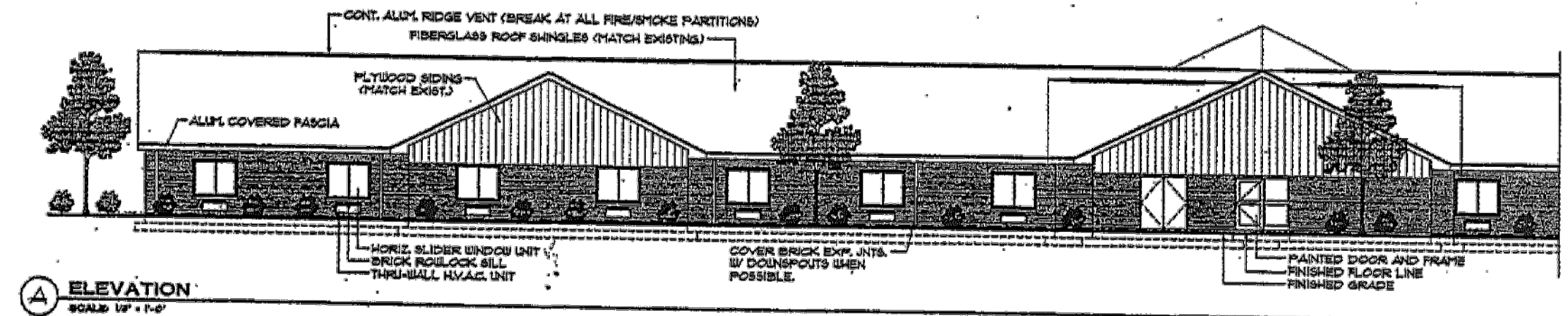
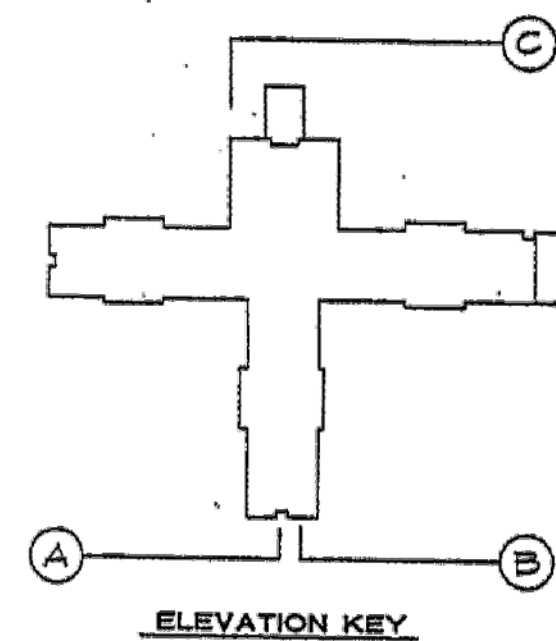
This drawing is the property of Burton Engineering Associates and is not to be reproduced or copied in whole or in part. It is not to be used on any other project and is to be returned upon request.

BURTON ENGINEERING ASSOCIATES  
CIVIL ENGINEERS  
LAND PLANNERS  
5950 Fairview Rd. • Suite 100 • Charlotte, NC 28210  
(704) 553-8881 • Fax (704) 553-8860

Project	Sheet Title	
	CTB	
	Engineer GDM	
Sheet	Drawn By 11/19/10	
	Date	
Revisions		
	1. 01/21/11 CMPC COMMENTS	
Project Number		
557-001		
Sheet	of	
Z2	3	



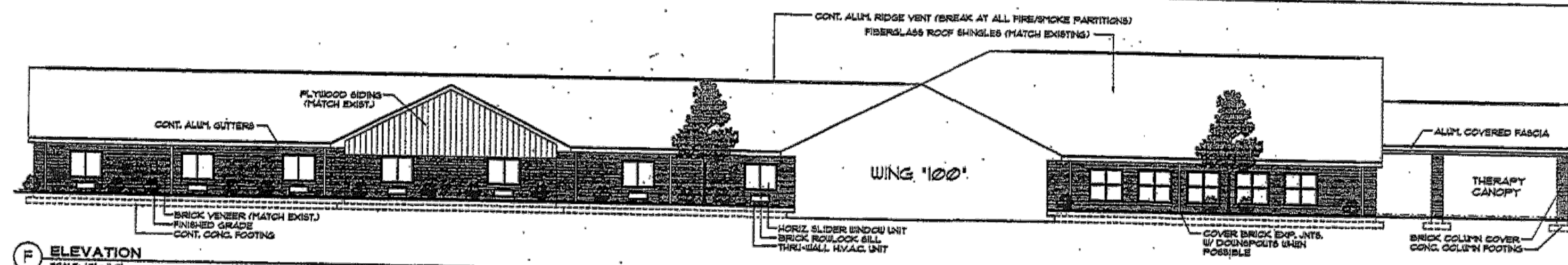
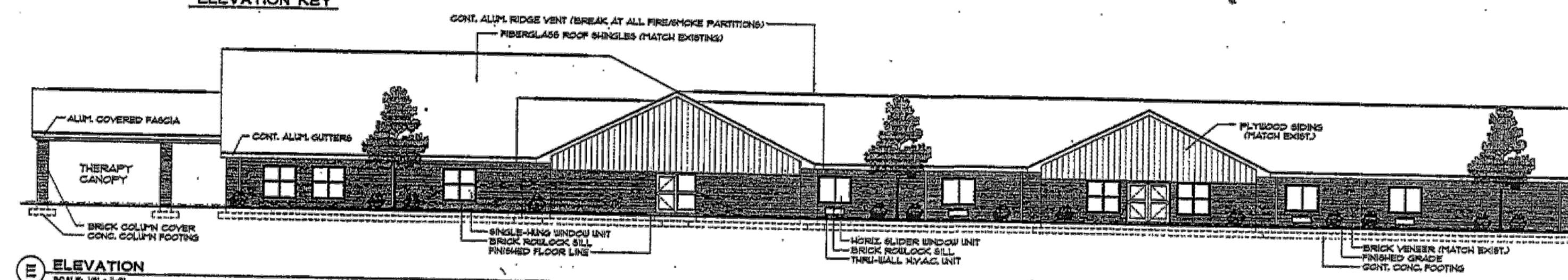
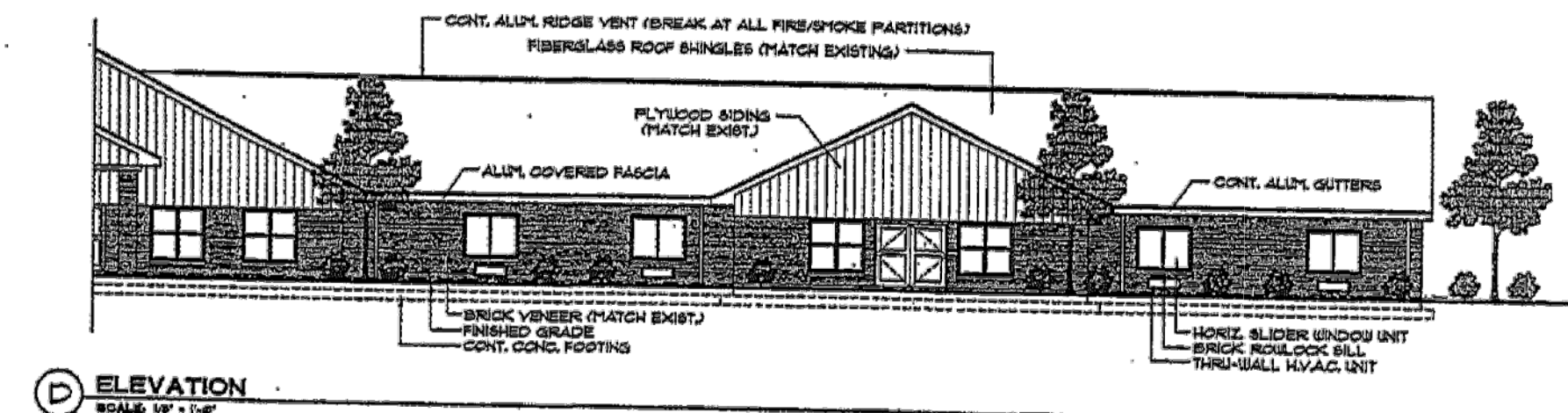
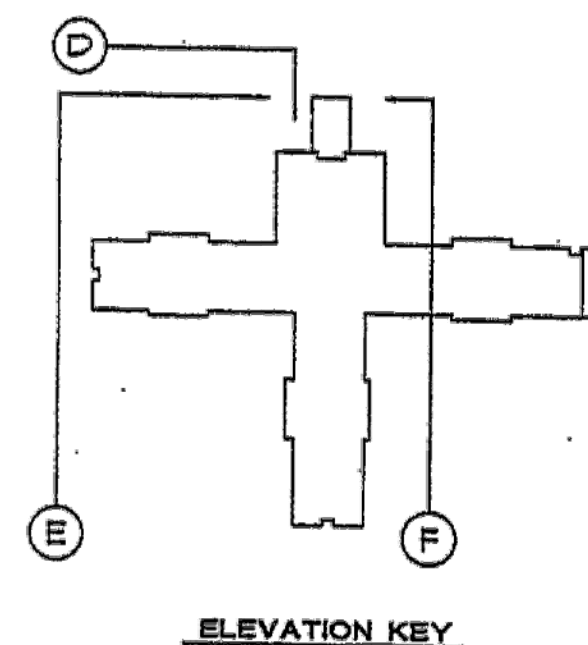
P:\DWG\557-001 TODDVILLE RD NURSING ADDITION\REZONING\GIS&SURVEY\BASE\PHASE\AMENDED.DWG 3 ARCH 1/21/2011 1:34:35 PM HP02.CTB GIMORRIS



DAVID R. POLSTON • ARCHITECT  
3806 PARK AVENUE, SUITE 2-L  
WILMINGTON, NORTH CAROLINA 28403  
PH: (910) 350-8800 FAX: (910) 350-0401

CHARLOTTE HEALTH CARE CENTER  
PHASE II • 60 BED ADDITION  
CHARLOTTE, NORTH CAROLINA

## PHASE II



DAVID R. POLSTON • ARCHITECT  
3806 PARK AVENUE, SUITE 2-L  
WILMINGTON, NORTH CAROLINA 28403  
PH: (910) 350-8800 FAX: (910) 350-0401

CHARLOTTE HEALTH CARE CENTER  
PHASE II • 60 BED ADDITION  
CHARLOTTE, NORTH CAROLINA

## PHASE II

THIS DRAWING IS THE PROPERTY OF  
BURTON ENGINEERING ASSOCIATES  
AND IS NOT TO BE REPRODUCED OR  
COPIED IN WHOLE OR IN PART.  
IT IS NOT TO BE USED ON ANY  
OTHER PROJECT AND IS TO BE  
RETURNED UPON REQUEST.



BURTON  
ENGINEERING  
ASSOCIATES  
CIVIL ENGINEERS  
LAND PLANNERS  
5950 Fairview Rd. • Suite 100 • Charlotte, NC 28210  
(704) 553-8881 • Fax (704) 553-8880

Project **CHARLOTTE HEALTH CARE CENTER**  
1735 TODDVILLE ROAD, CHARLOTTE, NC

Sheet  
Title **SCHEMATIC ARCHITECTURAL RENDERINGS**

CTB  
Engineer  
GDM  
Drawn By  
01/21/11  
Date

Revisions

Project Number  
557-001

Sheet of  
Z3 3