

SITE DATA TABLE

Table with 3 columns: EXISTING ZONING, PROPOSED ZONING, SITE AREA, PROPOSED SETBACKS (INST), and DEPENDENT LIVING NURSING HOME details.

GENERAL NOTES

- A. BOUNDARY SURVEY PROVIDED BY: R.B. PHARR & ASSOCIATES... B. DEVELOPER: FRALIN & WALDRON, INC... C. TOPOGRAPHY & PLANIMETRICS PROVIDED BY G.I.S. baseball

APPROVED BY CITY COUNCIL

THIS DRAWING IS THE PROPERTY OF BURTON ENGINEERING ASSOCIATES AND IS NOT TO BE REPRODUCED OR COPIED IN WHOLE OR IN PART. IT IS NOT TO BE USED ON ANY OTHER PROJECT AND IS TO BE RETURNED UPON REQUEST.

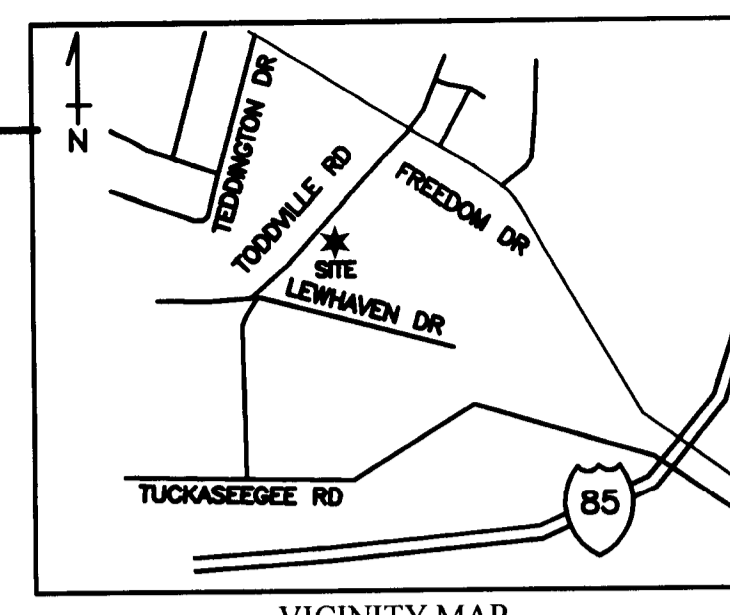
BURTON ENGINEERING ASSOCIATES logo and contact information: 5950 Fairview Rd., Suite 100, Charlotte, NC 28210

CHARLOTTE HEALTH CARE CENTER 1735 TODDVILLE ROAD, CHARLOTTE, NC TECHNICAL DATA SHEET

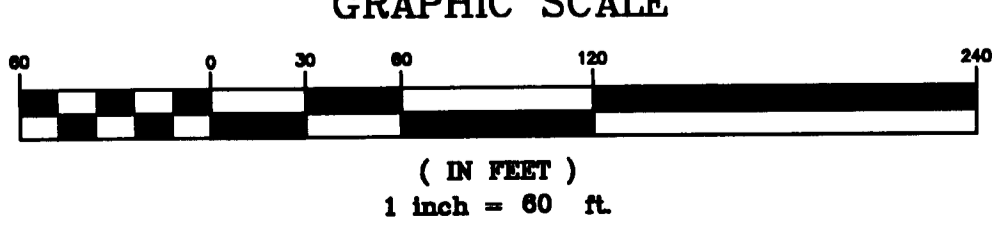
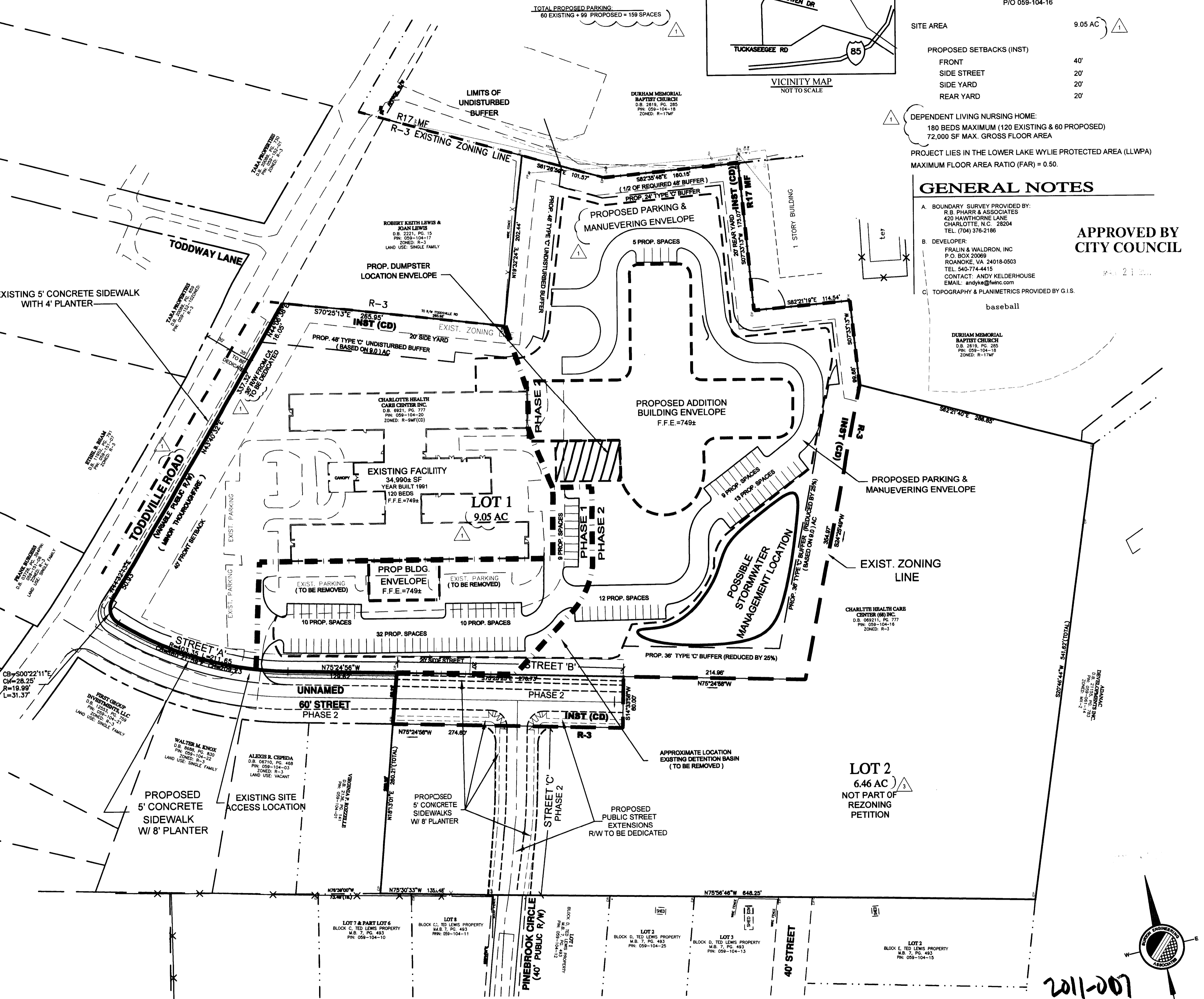
Project information table: Project (CTB), Engineer (GDM), Drawn By (11/19/10), Date, Revisions, Project Number (557-001), Sheet (21 of 3)

PARKING SUMMARY

REGULAR: REQUIRED PARKING: 1 SPACE / 3 BEDS = 180 / 3 = 60 SPACES. TOTAL PROPOSED PARKING: 60 EXISTING + 89 PROPOSED = 149 SPACES



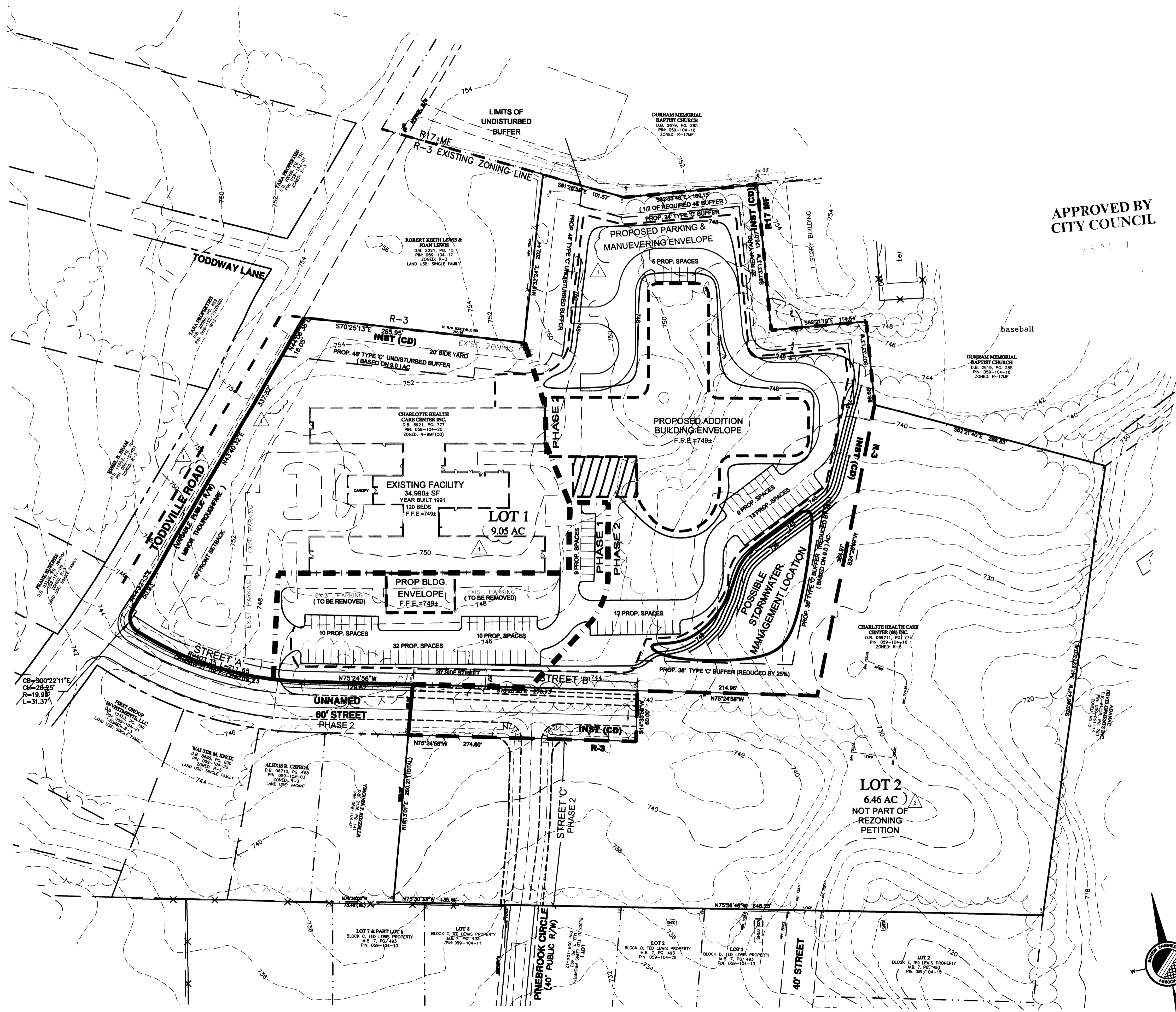
- DEVELOPMENT STANDARDS January 16, 2011. GENERAL PROVISIONS 1. Unless more stringent standards are established by the Technical Data Sheet... 2. The purpose of this rezoning request is to accommodate the expansion of an existing dependent living nursing home... 3. The development depicted on the Technical Data Sheet is intended to reflect the arrangement of proposed uses on the Site... 4. Future amendments to this Technical Data Sheet and these Development Standards may be applied for by the then Owner or Owners of the Site... PERMITTED USES... TRANSPORTATION... ARCHITECTURAL STANDARDS... STREETScape AND LANDSCAPING... SIGNAGE... LIGHTING... PHASING... SETBACKS, SIDE YARDS AND REAR YARDS... BINDING EFFECT OF THE REZONING PETITION



PRELIMINARY NOT FOR CONSTRUCTION

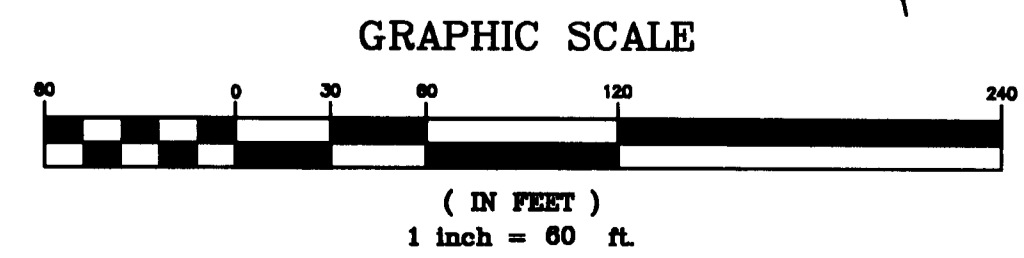
2011-007

P:\DWG\557-001\_TODDVILLE\_RD\_NURSING\_ADDITION\REZONING\CGES\DWG\REBASE\PHASE1\MENUEVD.DWG 2-TOPD 1/21/2011 1:33:48 PM HP02.CTB GDMORRIS



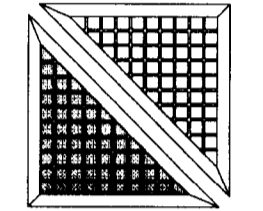
APPROVED BY  
CITY COUNCIL

PRELIMINARY  
NOT FOR CONSTRUCTION



THIS DRAWING IS THE PROPERTY OF  
BURTON ENGINEERING ASSOCIATES  
AND IS NOT TO BE REPRODUCED OR  
COPIED IN WHOLE OR IN PART.  
IT IS NOT TO BE USED ON ANY  
OTHER PROJECT AND IS TO BE  
RETURNED UPON REQUEST.

**BURTON  
ENGINEERING  
ASSOCIATES**  
CIVIL ENGINEERS  
LAND PLANNERS



5950 Fairview Rd. • Suite 100 • Charlotte, NC 28210  
(704) 563-8861 • Fax (704) 563-8860

**CHARLOTTE HEALTH CARE CENTER**  
1735 TODDVILLE ROAD, CHARLOTTE, NC

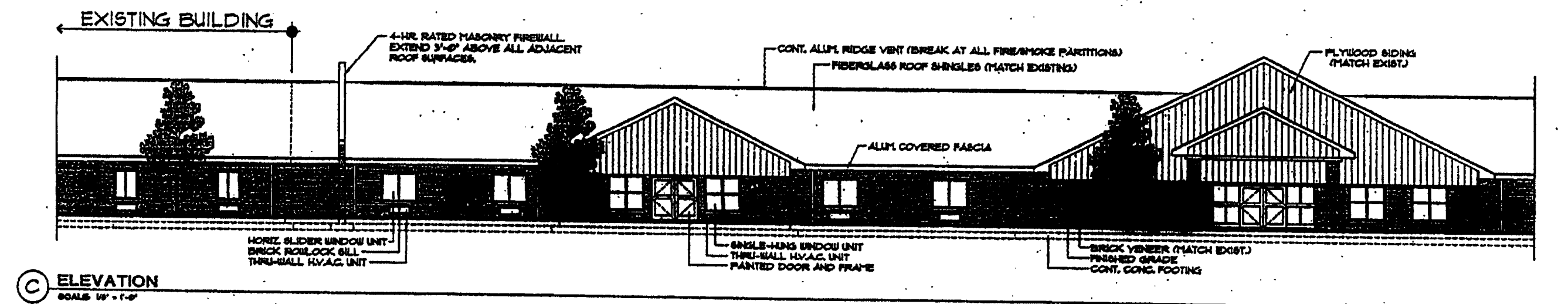
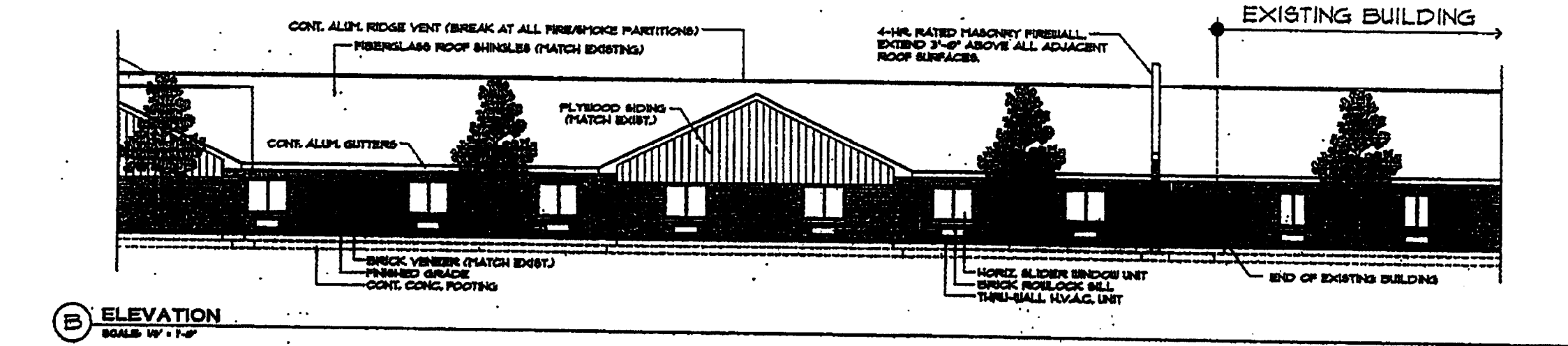
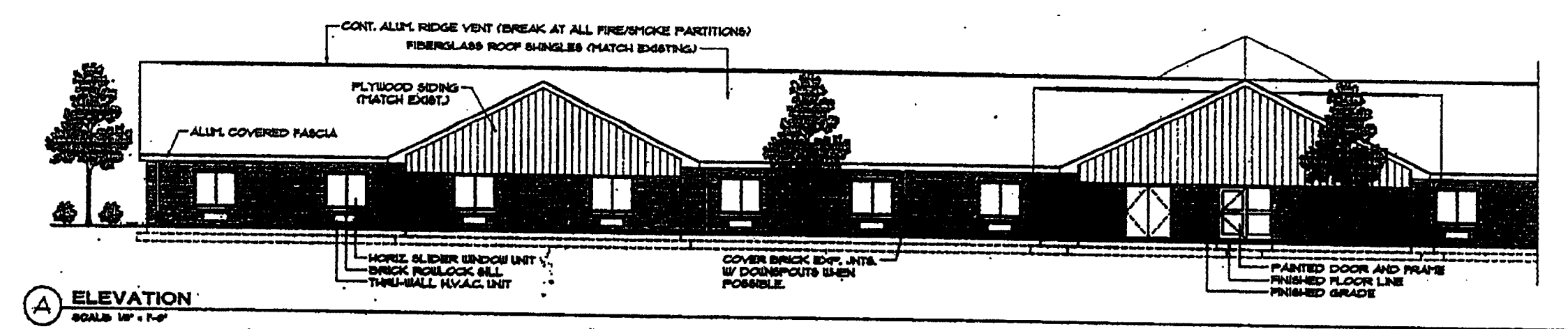
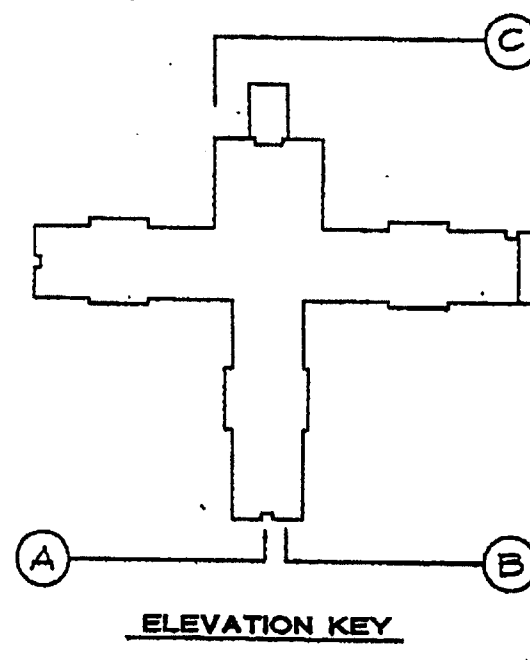
**TOPOGRAPHICAL SURVEY**

Project  
CTB  
Engineer  
GDM  
Drawn By  
11/19/10  
Date

Revisions  
1. 012111 CMPC COMMENTS

Project Number  
557-001

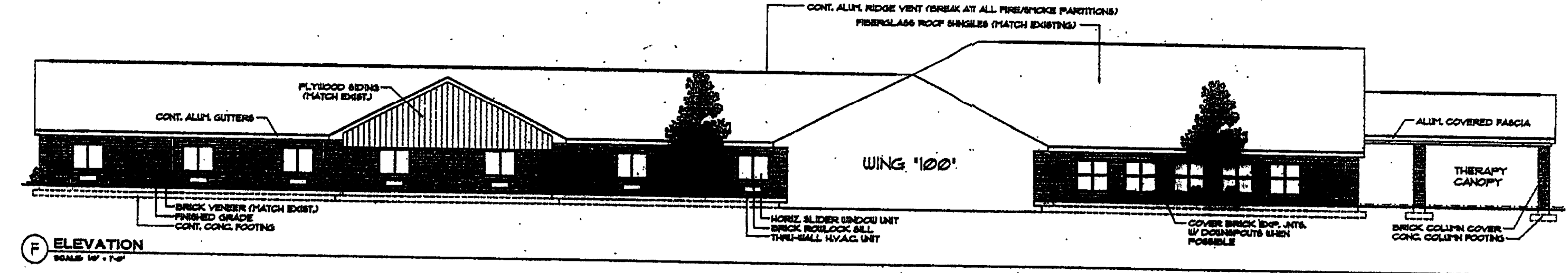
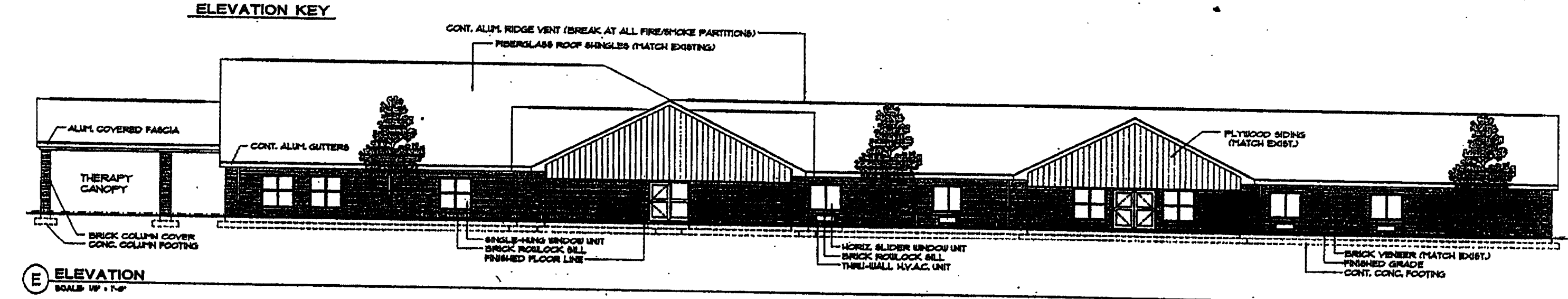
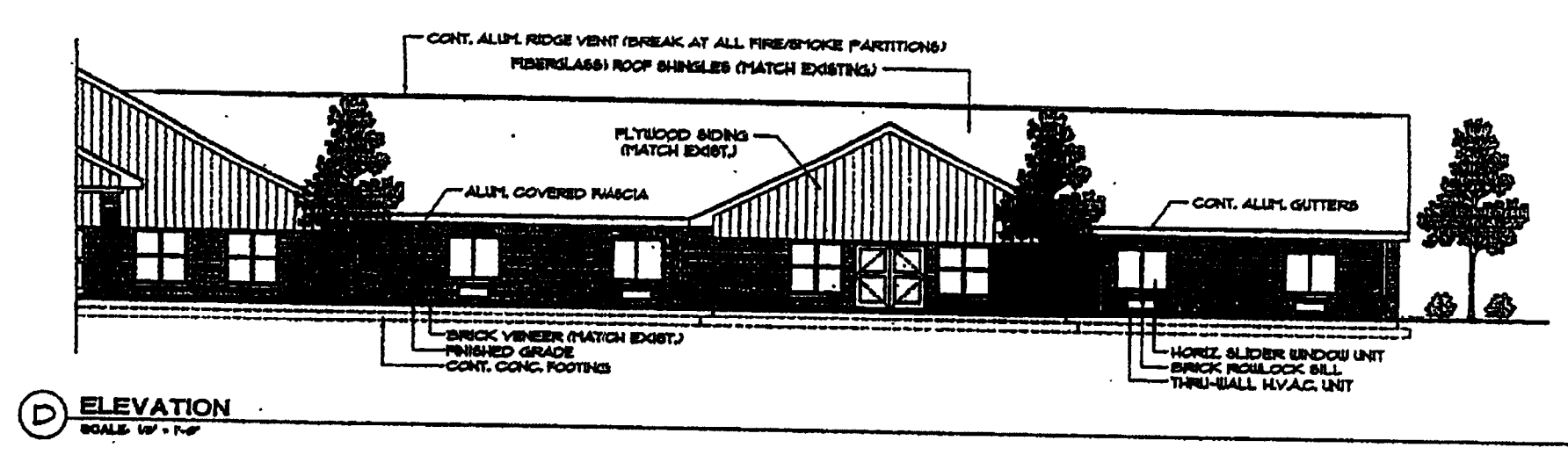
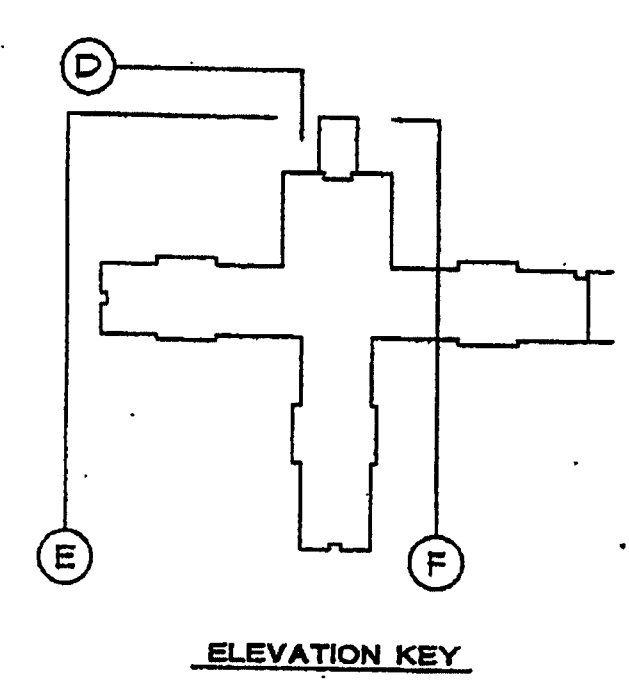
Sheet of  
**22** **3**



DAVID R. POLSTON • ARCHITECT  
3806 PARK AVENUE, SUITE 2-L  
WILMINGTON, NORTH CAROLINA 28403  
PH: (910) 350-8900 FAX: (910) 350-0421

CHARLOTTE HEALTH CARE CENTER  
PHASE II • 60 BED ADDITION  
CHARLOTTE, NORTH CAROLINA

PHASE II



DAVID R. POLSTON • ARCHITECT  
3806 PARK AVENUE, SUITE 2-L  
WILMINGTON, NORTH CAROLINA 28403  
PH: (910) 350-8900 FAX: (910) 350-0421

CHARLOTTE HEALTH CARE CENTER  
PHASE II • 60 BED ADDITION  
CHARLOTTE, NORTH CAROLINA

PHASE II

APPROVED BY  
CITY COUNCIL

THIS DRAWING IS THE PROPERTY OF  
BURTON ENGINEERING ASSOCIATES  
AND IS NOT TO BE REPRODUCED OR  
COPIED IN WHOLE OR IN PART.  
IT IS NOT TO BE USED ON ANY  
OTHER PROJECT AND IS TO BE  
RETURNED UPON REQUEST.

**BURTON ENGINEERING ASSOCIATES**  
CIVIL ENGINEERS  
LAND PLANNERS

5950 Fairview Rd. • Suite 100 • Charlotte, NC 28210  
(704) 553-8881 • Fax (704) 553-8860

Project  
**CHARLOTTE HEALTH CARE CENTER**  
1735 TODDVILLE ROAD, CHARLOTTE, NC

Sheet Title  
**SCHEMATIC ARCHITECTURAL RENDERINGS**

Engineer  
**CTB**  
GDM  
Date  
01/21/11

Revisions

Project Number  
557-001

Sheet of  
**Z3 3**

P:\DWG\557-001 TODDVILLE RD NURSING ADDITION\VEZONING\GSS\REVISED\PHASE II\AMENDED.DWG 3 ARCH 1/21/2011 1:35:46 PM HPD2.CTB