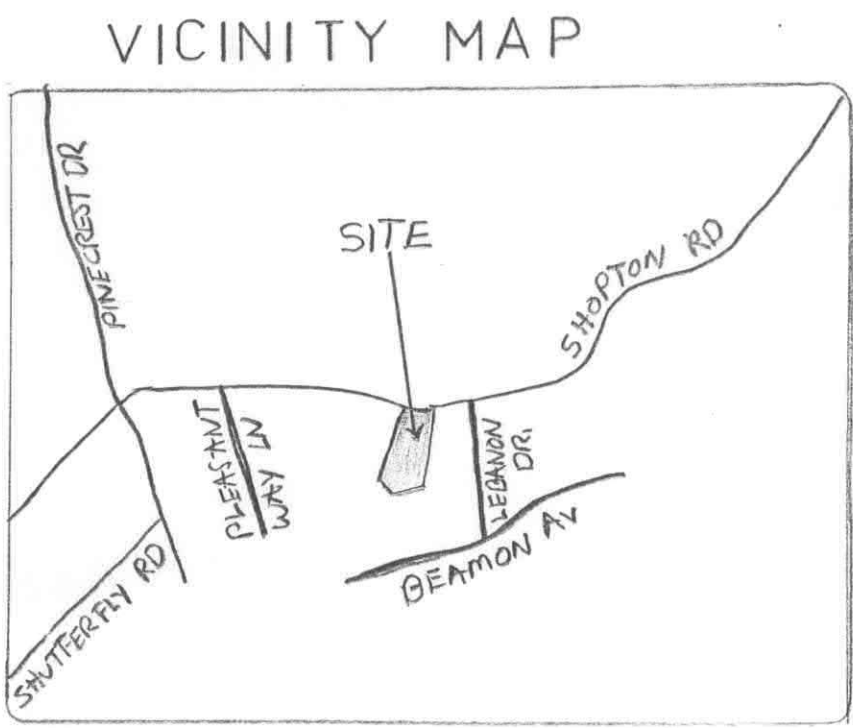


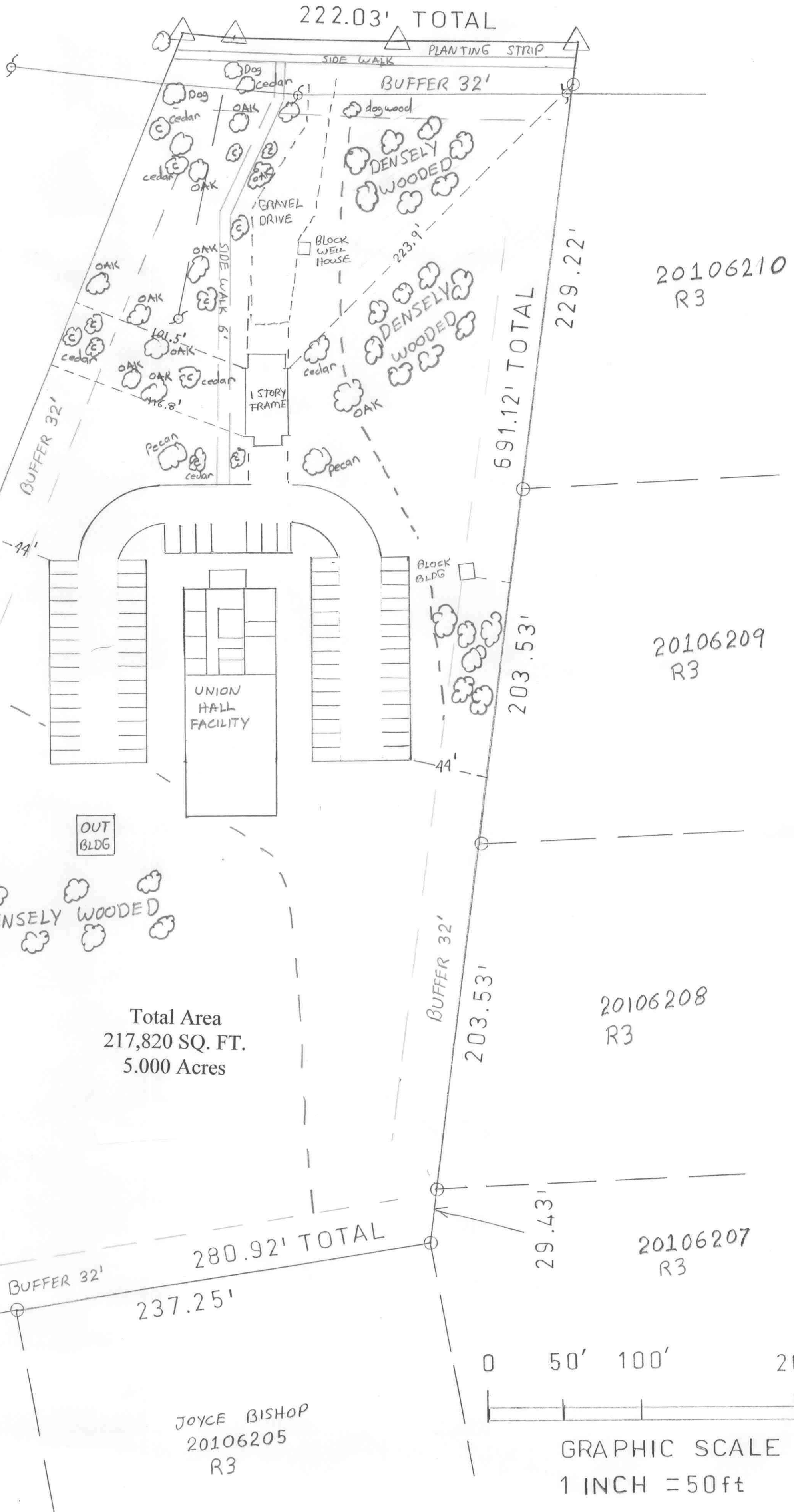
International Association of Machinists & Aerospace Workers
Victory Lodge 1725

3201 SHOPTON ROAD
APPARENT 60' PUBLIC R/W 22 BC TO BC



LEE YANG
SONG LEE
20106211
R3

NORTH PER DEED BOOK 24674 PAGE 391



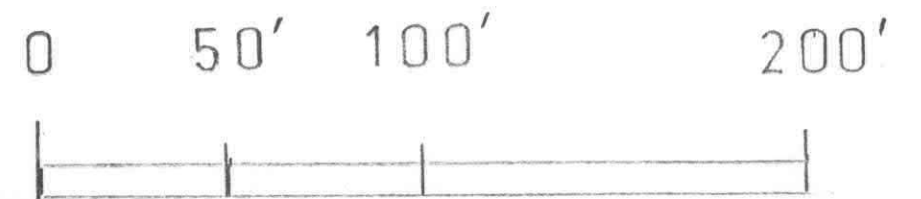
Development Information
Address 3201 Shopton Road.
Parcel ID 20106229
Area 5 Acres
Existing Zoning Single Family, R3

Proposed Zoning
Institutional, CD
Fraternal facility, civic or social Service.

Proposed site would
Re-move current structure

Main building 9304 SF Out Building 720 SF
Total Building Square Feet 10,024
Parking Lots 60 spaces 14,112 SF
1 Space = 9'x19' = 171 SF
Plus 6 Handy Cap spaces 10'x19'
Driveway 26' Wide
Side Walk 6 ft. wide
Road planting Strip 8 ft. Minimum
Setback 25 ft. minimum
Class C Buffer 32 ft.
Detached lighting no/exceed 20 ft.
Signage will comply with chapter 13

Total Area
217,820 SQ. FT.
5.000 Acres



GRAPHIC SCALE
1 INCH = 50ft