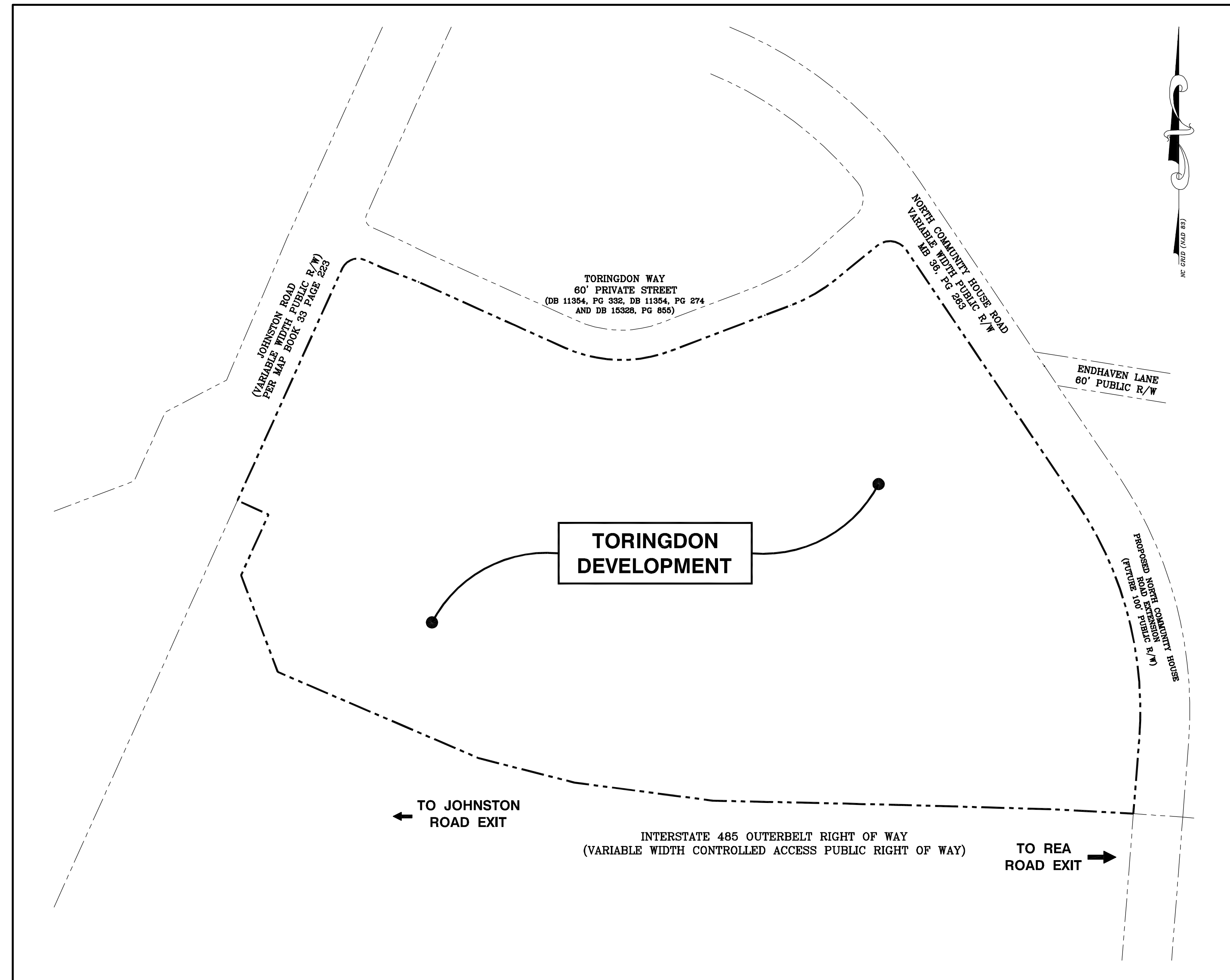
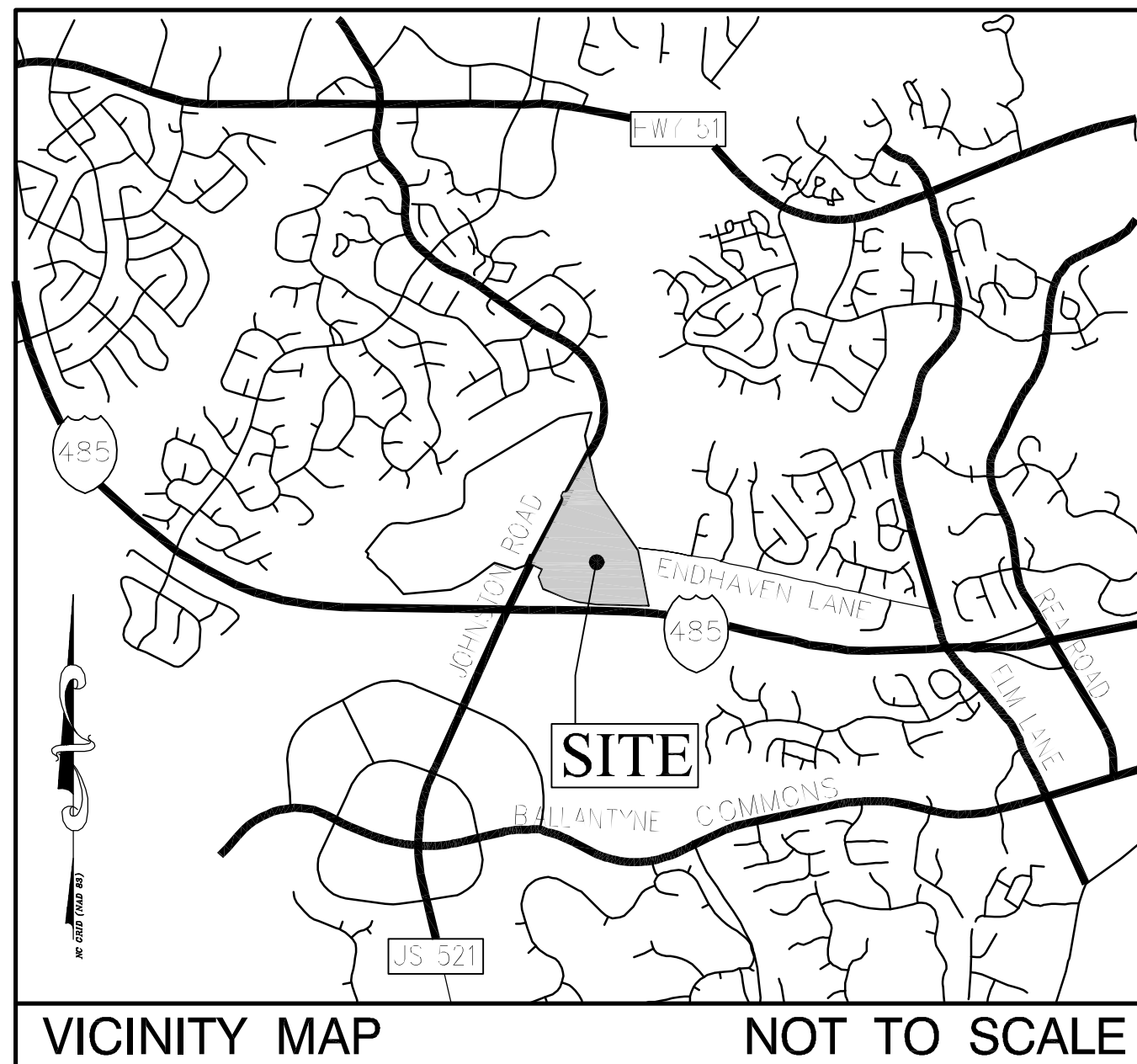


# TORINGDON REZONING PLAN

## TORINGDON DEVELOPMENT

2010 REZONING PETITION # 2010 - 035



LOCATION MAP  
SCALE : 1" = 150'

### SITE DATA TABLE:

- P.I.D.'s : 22323108, 22323111, 22323136, 22323137, 22323138, 22323139, 22323153, 22323154, 22323159, 22323160, 22323161, 22323199
- OVERALL DEVELOPMENT AREA : 37.3± ACRES (GROSS)
- EXISTING ZONING : CC (BY REZONING PETITION NOS. 2008 - 040 AND 2005 - 126)
- PROPOSED ZONING : CC - SPA
- USE(S) : GENERAL AND MEDICAL OFFICE / RETAIL / HOTEL / MULTI - FAMILY RESIDENTIAL / RESTAURANT AND PERSONAL SERVICE (SEE DEVELOPMENT STANDARDS)
- MAXIMUM ALLOWED SQUARE FOOTAGES (SEE DEVELOPMENT STANDARDS) :  
TOTAL OFFICE SPACE : 725,000 SQ. FT. (MAX.)  
(534,700 SQ. FT. EXIST.)  
TOTAL ACCESSORY RETAIL SPACE : 11,500 SQ. FT.  
(5,500 SQ. FT. EXIST.)  
TOTAL RESIDENTIAL UNITS : 257 D.U.  
HOTEL : 80 ROOMS
- TOTAL PARKING IN DECKS : 1,280 SPACES
- TOTAL SURFACE PARKING : 1,366 SPACES

### INDEX OF SHEETS

DESCRIPTION	SHEET NO.
COVER SHEET	C1
REZONING SITE PLAN	C2
DEVELOPMENT CROSS - SECTIONS	C3
DEVELOPMENT STANDARDS	C4

PETITIONER / OWNER : LIGHTIN CORPORATION  
3110 EDWARDS MILL ROAD  
SUITE 200  
RALEIGH, NC 27612  
[ TELE ] 919.783.6000  
[ FAX ] 919.783.7220  
CONTACT : JEFF SMITH

**Dewberry**  
Dewberry & Davis, Inc.  
CIVIL ENGINEER : DEWBERRY & DAVIS, INC.  
6135 LAKEVIEW ROAD  
SUITE 400  
CHARLOTTE, NC 28269  
[ TELE ] 704.509.9918  
[ FAX ] 704.509.9937  
CONTACT : CHRISTOPHER M. FLECK, PE

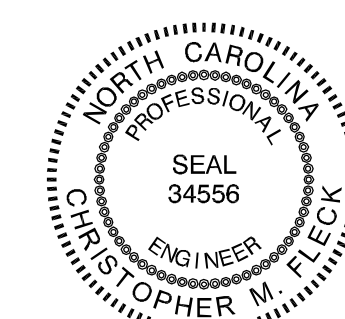
**PGAL**  
ARCHITECT : PGAL  
1425 ELLSWORTH  
INDUSTRIAL DR. STE 15  
ATLANTA, GEORGIA 30361  
[ TELE ] 404.602.3800  
[ FAX ] 404.602.1810  
CONTACT : FRED D. DOANE, AIA

FOR PUBLIC HEARING  
PETITION # 2010 - 035

SEAL

REZONING  
DOCUMENT  
NOT FOR  
CONSTRUCTION

SEAL



SCALE : NOTED

No.	Date	By	Description
1	05/14/2010	RAM	Revisions per City Review

REVISIONS

DRAWN BY : CFC  
APPROVED BY : ARV  
CHECKED BY : CMF  
DATE : 03 / 19 / 2010

TITLE

COVER  
SHEET  
FOR PUBLIC  
HEARING

PROJECT NO. 10001471

C1

SHEET NO.



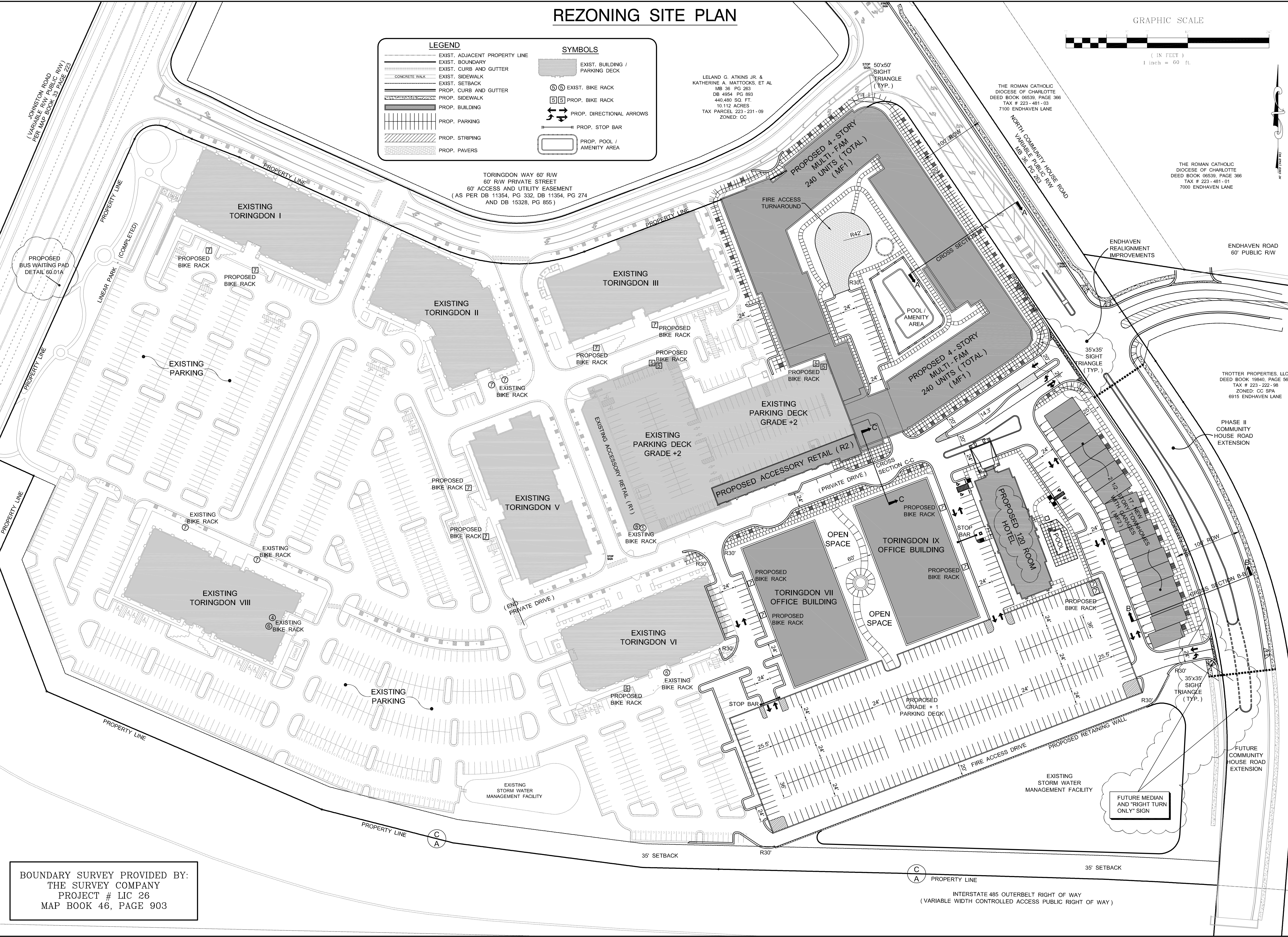
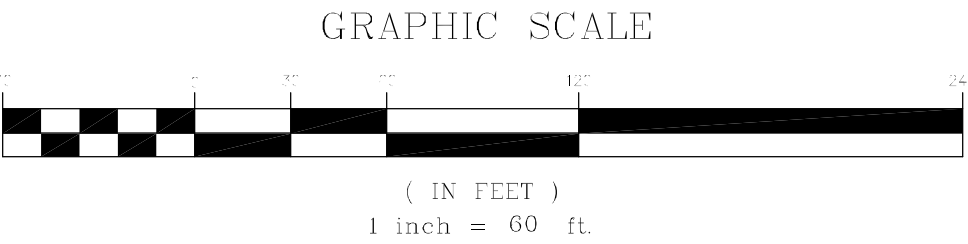
REZONING SITE PLAN

**LEGEND**

- EXIST. ADJACENT PROPERTY LINE
- EXIST. BOUNDARY
- EXIST. CURB AND GUTTER
- EXIST. SIDEWALK
- EXIST. SETBACK
- PROP. CURB AND GUTTER
- PROP. SIDEWALK
- PROP. BUILDING
- PROP. PARKING
- PROP. STRIPING
- PROP. PAVERS

**SYMBOLS**

- EXIST. BUILDING / PARKING DECK
- EXIST. BIKE RACK
- PROP. BIKE RACK
- PROP. DIRECTIONAL ARROWS
- PROP. STOP BAR
- PROP. POOL / AMENITY AREA



BOUNDARY SURVEY PROVIDED BY:  
THE SURVEY COMPANY  
PROJECT # LIC 26  
MAP BOOK 46, PAGE 903

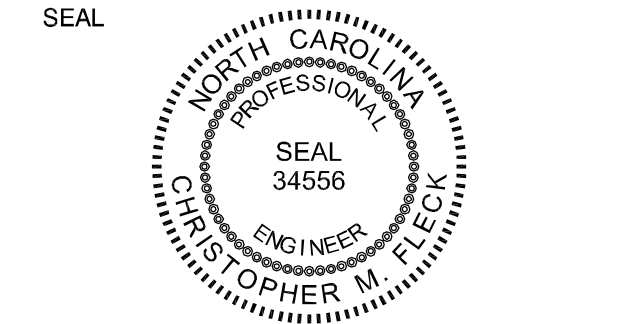
Dewberry & Davis, Inc.  
6135 LAKEVIEW ROAD  
SUITE 400  
CHARLOTTE, NC 28269-2609  
PHONE: (704) 509-9918  
FAX: (704) 509-9937

TORINGDON MIXED - USE DEVELOPMENT  
( TORINGDON WAY )

OWNER : LICHITIN CORPORATION  
3110 EDWARDS MILL ROAD  
SUITE 200  
RALEIGH, NORTH CAROLINA 27612  
PHONE : (919) 783 - 6000

CHARLOTTE, NORTH CAROLINA  
2010 REZONING PETITION PLANS

REZONING  
DOCUMENT  
NOT FOR  
CONSTRUCTION



SCALE : 1 inch = 60 feet

No.	Date	By	Description
1	05/14/2010	RAM	Revised per City Review

REVISIONS

DRAWN BY: CFC

APPROVED BY: ARV

CHECKED BY: CMF

DATE: 03 / 19 / 2010

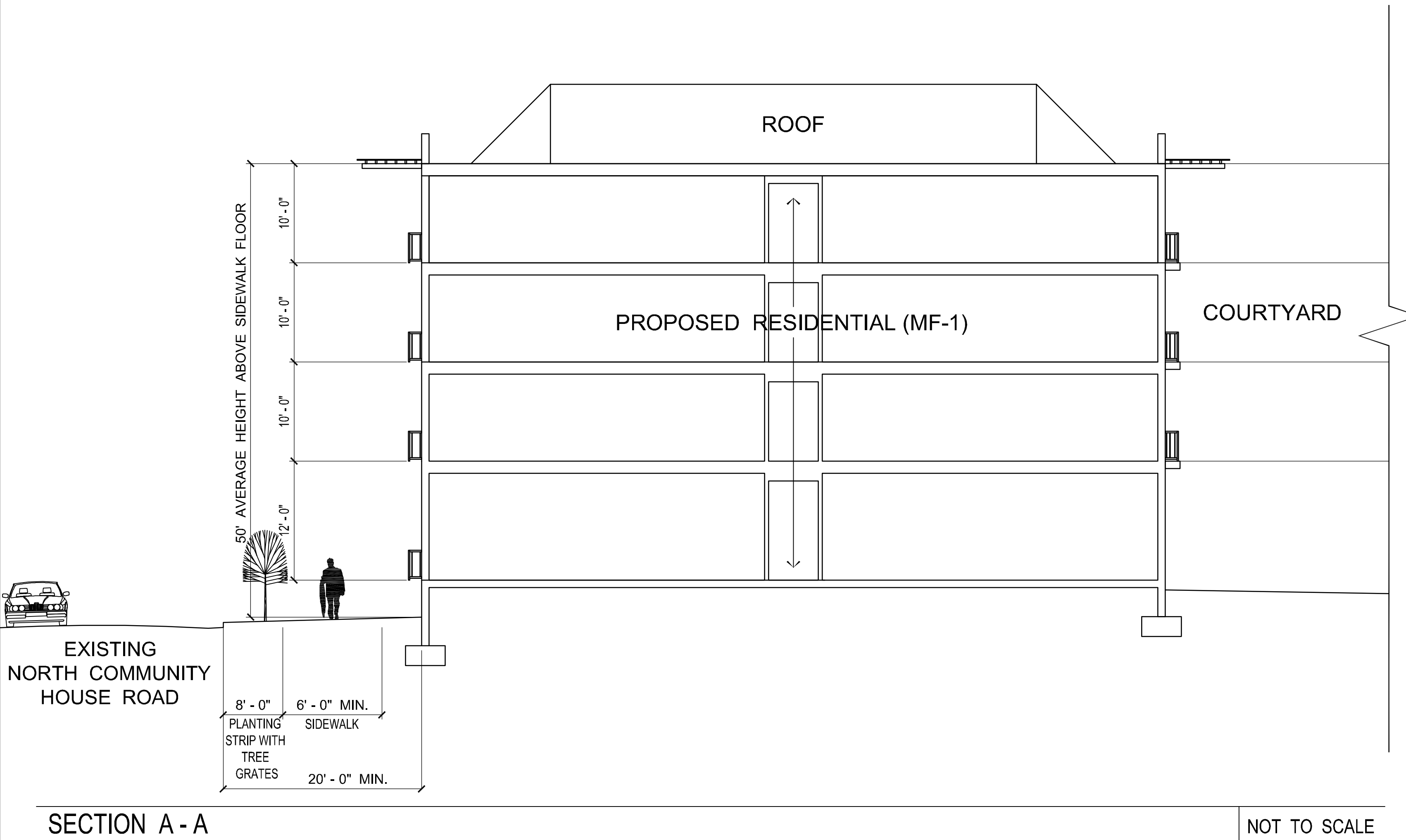
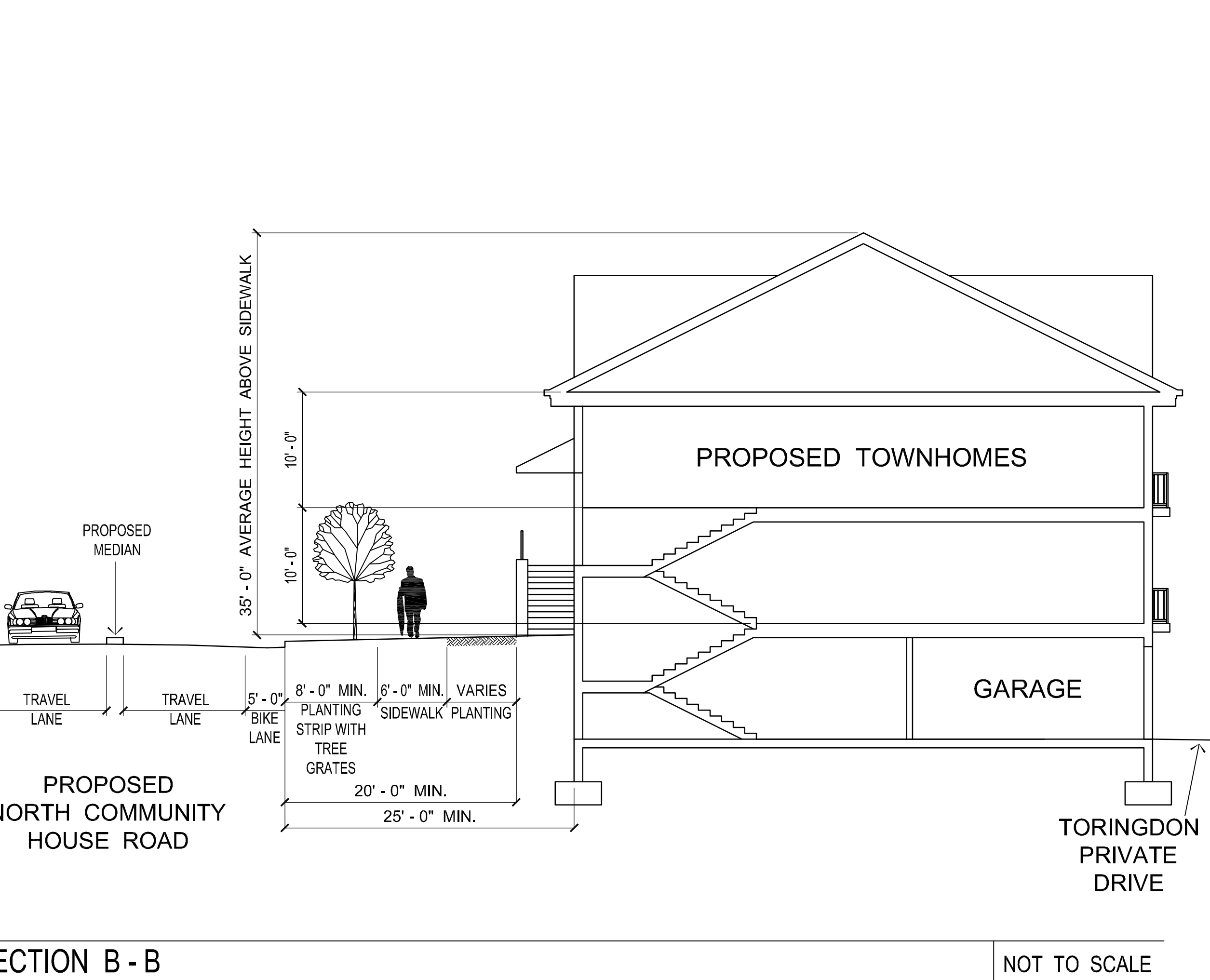
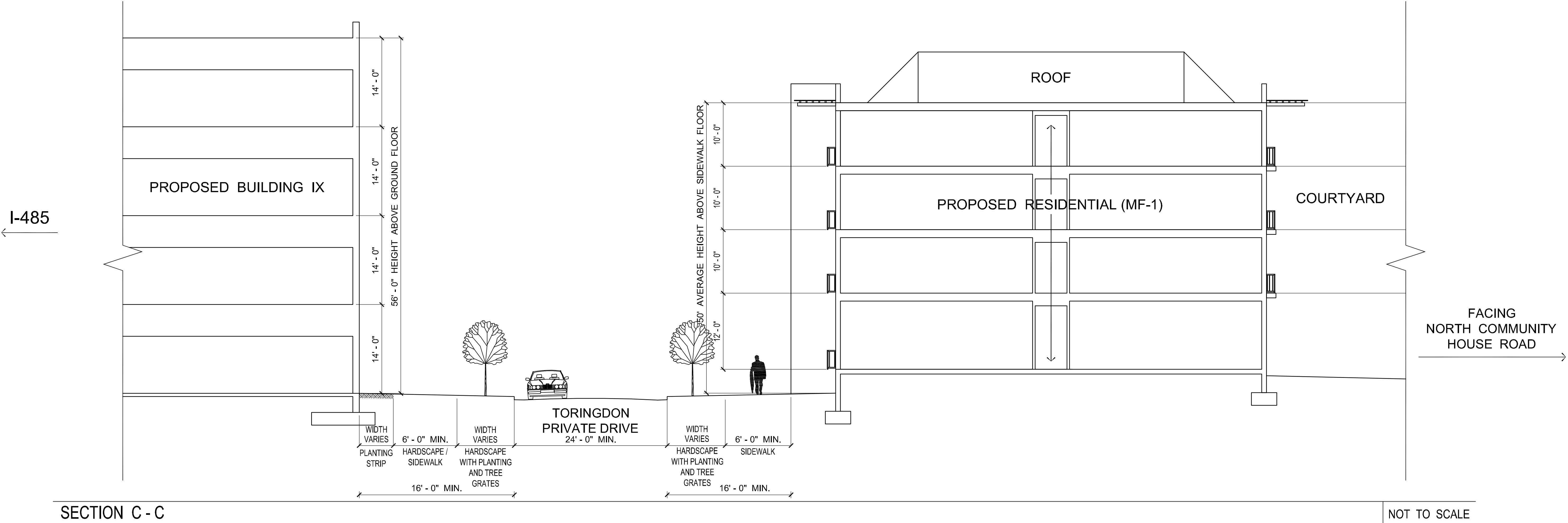
TITLE

**REZONING  
SITE PLAN  
FOR PUBLIC  
HEARING**

PROJECT NO. 10001471



DEVELOPMENT CROSS - SECTIONS



REVISIONS			Revised per City Review	
No.	Date	By	Description	
1	05/14/2010	RAM		

DRAWN BY CFC  
APPROVED BY ARV  
CHECKED BY CMF  
DATE 03 / 19 / 2010

TITLE  
DEVELOPMENT  
CROSS - SECTIONS  
FOR PUBLIC  
HEARING

PROJECT NO. 10001471



