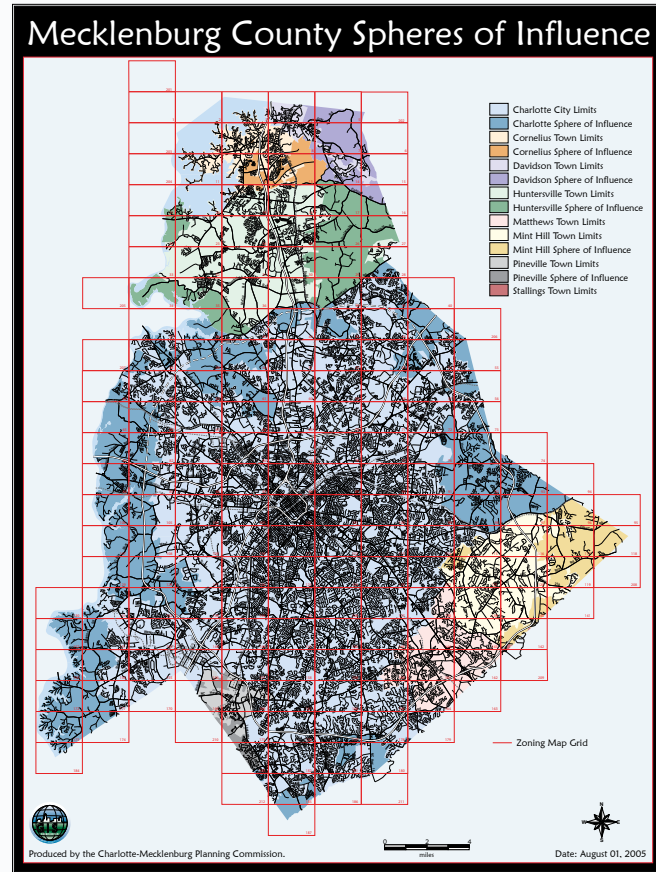
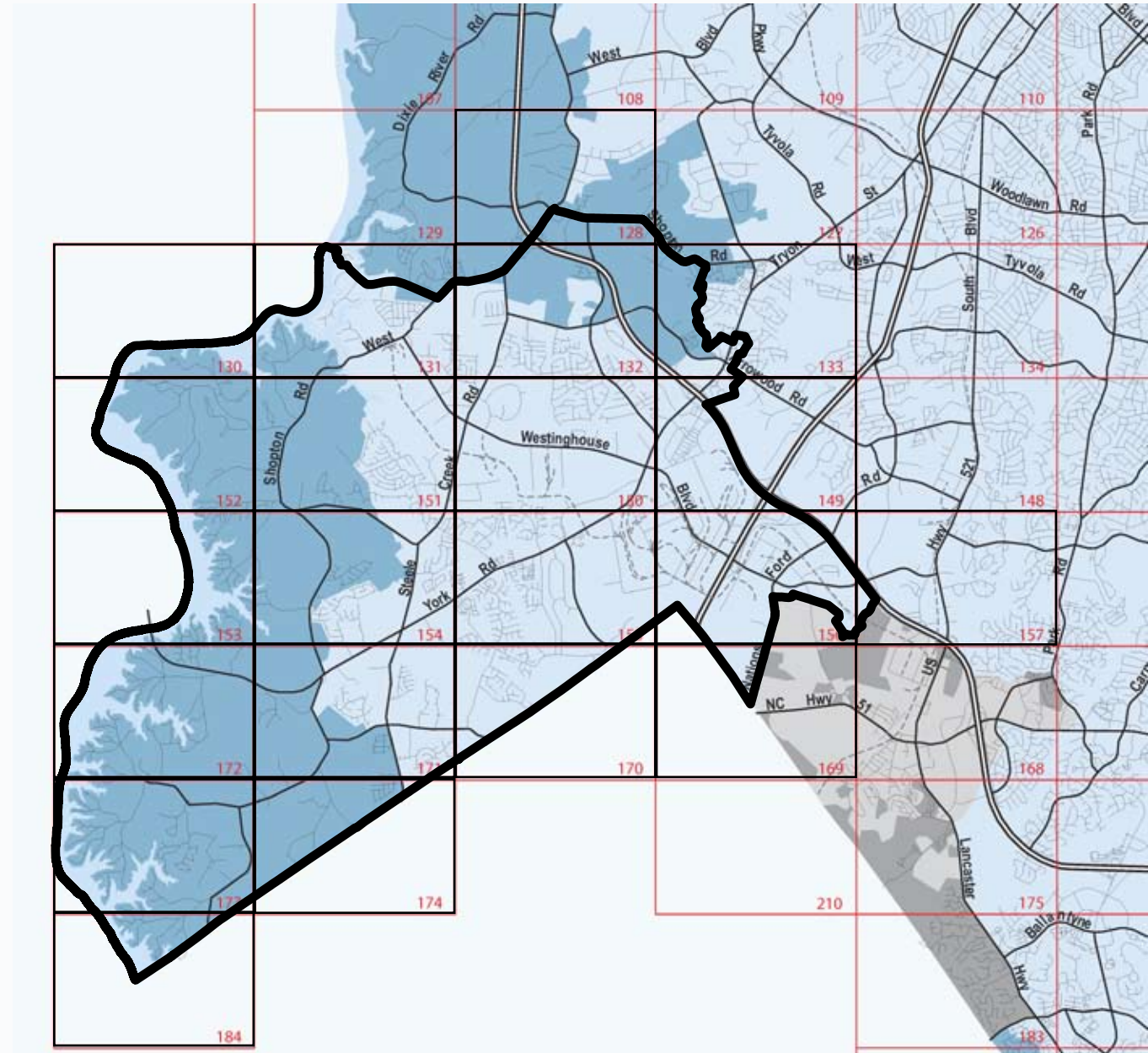


Go to [www.charlotteplanning.org](http://www.charlotteplanning.org)  
Under the Rezoning category select **Zoning Maps**



### Zoning Map What is it?

The Zoning Maps are rectangular maps based on the NC State Plan Coordinate System that show zoning designation for property. The numbering system starts in the northern part of Mecklenburg County and ends in the southern part of the County. There are 145 Zoning Maps. (not all Zoning Map Numbers are within the City of Charlotte's Zoning jurisdiction) Zoning Maps for property within Charlotte zoning jurisdiction are updated after the Charlotte City Council approves a Rezoning Petition.



To view the most up to date zoning classification for parcels in the plan area, click on the map grid above or visit [www.charlotteplanning.org](http://www.charlotteplanning.org).

