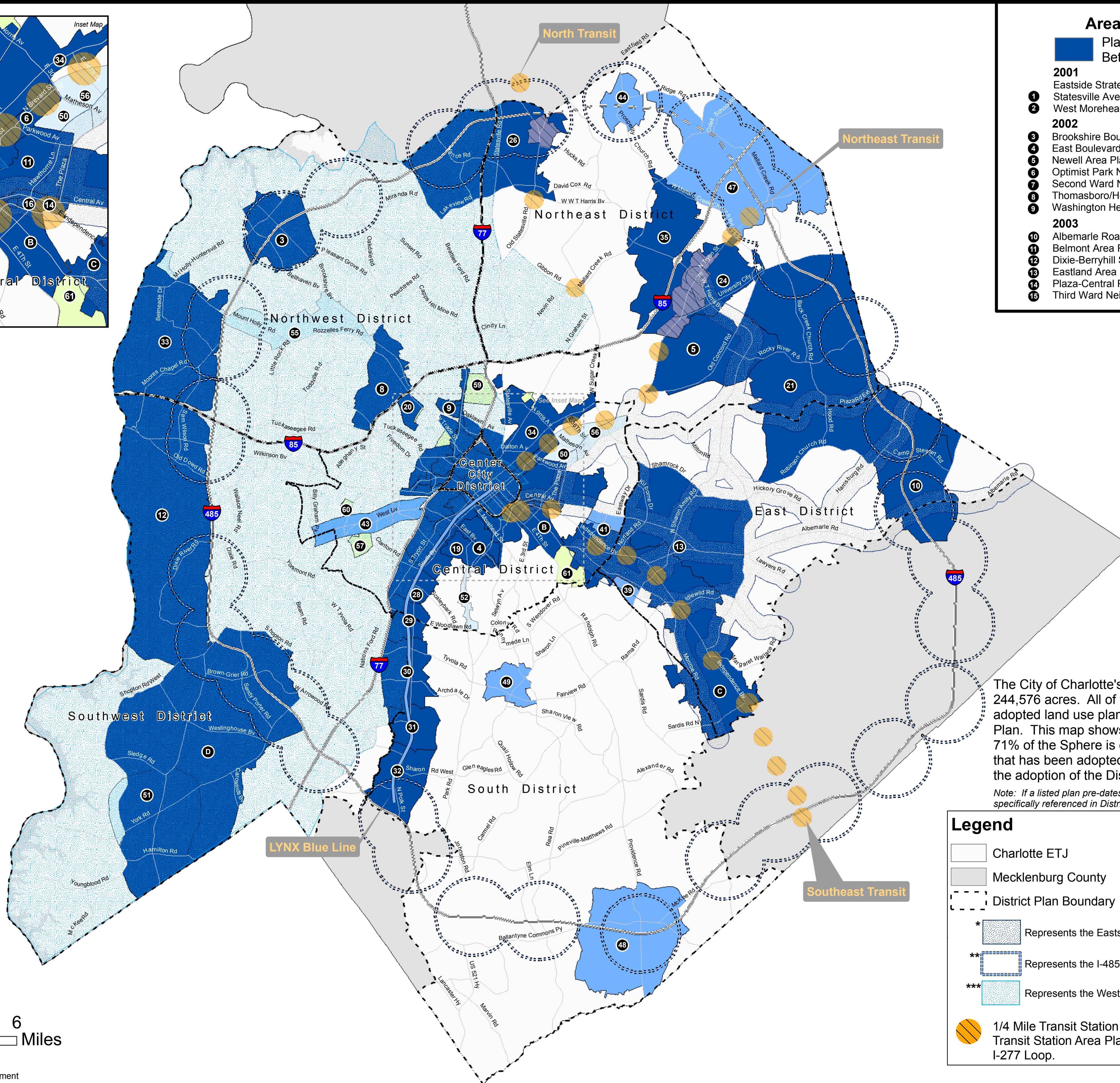
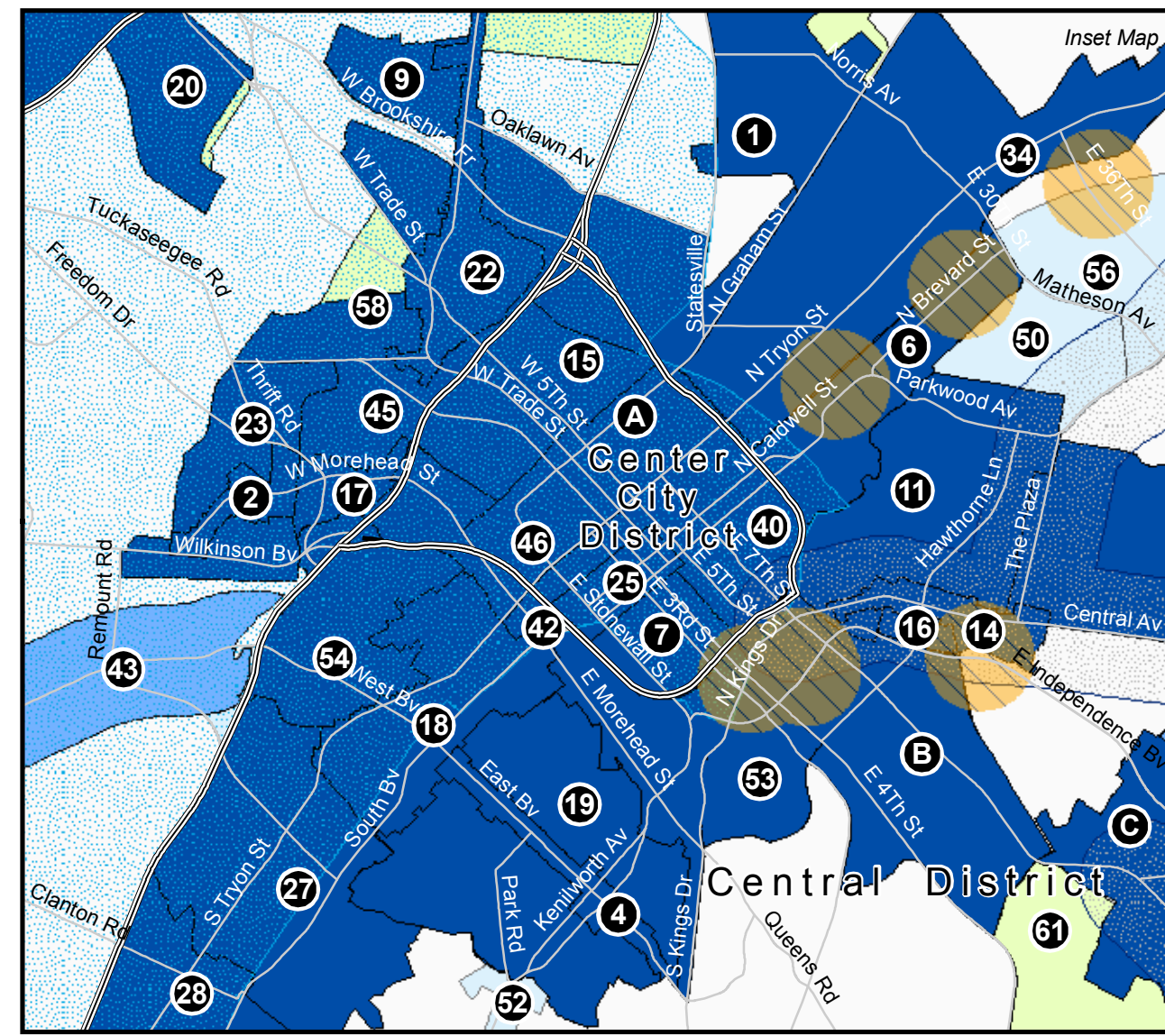


Charlotte-Mecklenburg Area Plans that Update the District Plans



- ### Area Plans
- Plans Adopted Between 2001-Present
 - 2001**
 - 1 Eastside Strategy Plan *
 - 2 Statesville Avenue Corridor Plan
 - 2 West Morehead Corridor Plan
 - 2002**
 - 3 Brookshire Boulevard/I-485 Area Plan
 - 4 East Boulevard Pedescape Plan
 - 5 Newell Area Plan
 - 6 Optimist Park Neighborhood Plan
 - 7 Second Ward Neighborhood Master Plan
 - 8 Thomasboro/Hoskins Area Plan
 - 9 Washington Heights Neighborhood Plan
 - 2003**
 - 10 Albemarle Road/I-485 Interchange Study
 - 11 Belmont Area Revitalization Plan
 - 12 Dixie-Berryhill Strategic Plan
 - 13 Eastland Area Plan
 - 14 Plaza-Central Pedescape Plan
 - 15 Third Ward Neighborhood Vision Plan

- 2004**
 - 16 Sunnyside Pedescape and Land Use Plan
 - 17 West Morehead Land Use and Pedescape Plan
- 2005**
 - 18 South End Transit Station Area Plan
- 2006**
 - 19 Dilworth Land Use and Streetscape Plan
 - 20 Lakewood Neighborhood Plan
 - 21 Rocky River Area Plan
 - 22 West End Land Use and Pedescape Plan
- 2007**
 - 23 Bryant Park Land Use and Streetscape Plan
 - 24 University City Area Plan (Includes Transit Station Area Plans)
- 2008**
 - 25 Brevard Street Land Use and Urban Design
 - 26 Northlake Area Plan (Includes Transit Station Area Plan)
 - 27 New Station Transit Station Area Plan
 - 28 Scaleybark Transit Station Area Plan
 - 29 Woodlawn Transit Station Area Plan
 - 30 Tyvola / Archdale Transit Station Area Plan
- 2009**
 - 31 Arrowood Transit Station Area Plan
 - 32 I-485 / Sharon Rd West Transit Station Area Plan
- 2010**
 - 33 Catawba Area Plan
 - 34 North Tryon Area Plan
 - 35 University Research Park Area Plan
- Underway (2010)**
 - A Center City 2020 Plan
 - B Elizabeth Area Plan
 - C Independence Blvd Area Plan
 - D Steele Creek Area Plan

The City of Charlotte's Sphere consists of 244,576 acres. All of this area is covered by an adopted land use plan, referred to as a District Plan. This map shows that 174,747 acres, or 71% of the Sphere is covered by an area plan that has been adopted (or is underway) since the adoption of the District Plans.

Note: If a listed plan pre-dates District Plan adoption, it was specifically referenced in District Plan to remain in effect.

Legend

- Charlotte ETJ
- Mecklenburg County
- District Plan Boundary
- Represents the Eastside Strategy Plan
- Represents the I-485 Interchange Analysis
- Represents the Westside Strategic Plan
- 1/4 Mile Transit Station Buffer, if no adopted Transit Station Area Plan or not within the I-277 Loop.
- Interstate
- Major Roads

- Plans Adopted Between 1996 & 2000
- 39 Oakhurst Land Use and Zoning Plan
- 1997**
 - 40 First Ward Master Plan
- 1998**
 - 41 Briar Creek/Woodland/Merry Oaks Small Area Plan
 - 42 South End/Uptown Rail Corridor
 - 43 West Boulevard Corridor Plan
- 1999**
 - 44 I-485 Interchange Analysis **
 - 45 Prosperity Church Road Villages
 - 45 Wesley Heights Neighborhood Plan
- 2000**
 - 46 Center City 2010 Vision Plan
 - 47 Northeast Area Plan
 - 48 Providence Road/I-485 Area Plan
 - 49 Southpark Small Area Plan
 - 49 Westside Strategic Plan***
- Plans Adopted Before 1996
- 1991**
 - 50 Villa Heights Special Project Plan
- 1992**
 - 51 Lower Steele Creek Area Plan
 - 52 Park Road Corridor Plan
- 1993**
 - 53 Cherry Small Area Plan
 - 54 Wilmore Small Area Plan
- 1994**
 - 55 Mount Holly Road Special Project Plan
- 1995**
 - 56 North Charlotte
- Action Plans
- Belmont Neighborhood Action Plan (1995) (See #11)
- Lakewood Neighborhood Action Plan (1995) (See #20)
- North Tryon Street Action Plan (1995) (See #34)
- Reid Park Neighborhood Action Plan (1995)
- Seversville Neighborhood Action Plan (1995)
- Cummings Avenue/Lincoln Heights Action Plan (1996)
- Wingate Neighborhood Action Plan (1996)
- Druid Hills Neighborhood Action Plan (1997) (See #1)
- Grier Heights Neighborhood Action Plan (1998)

