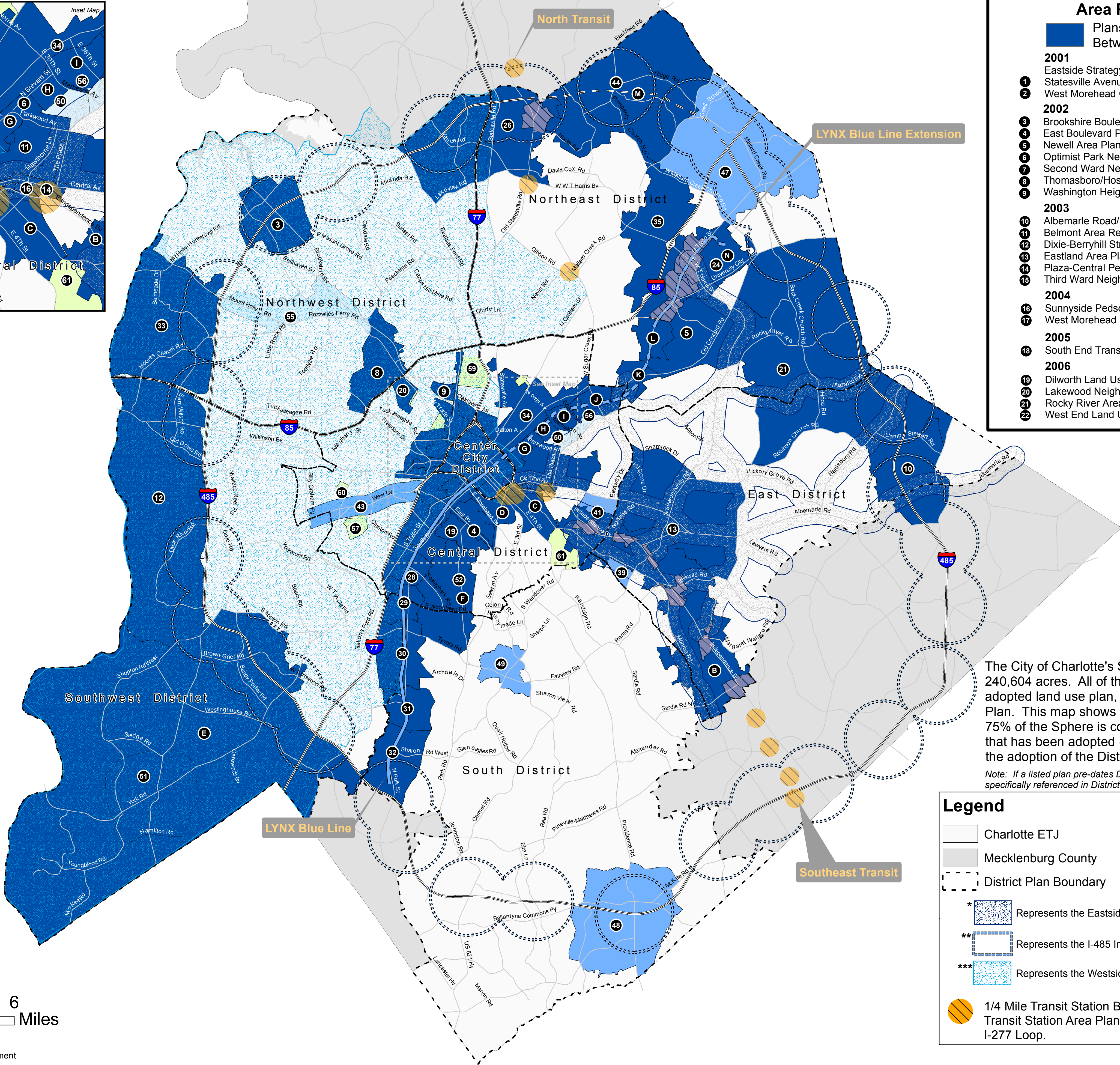
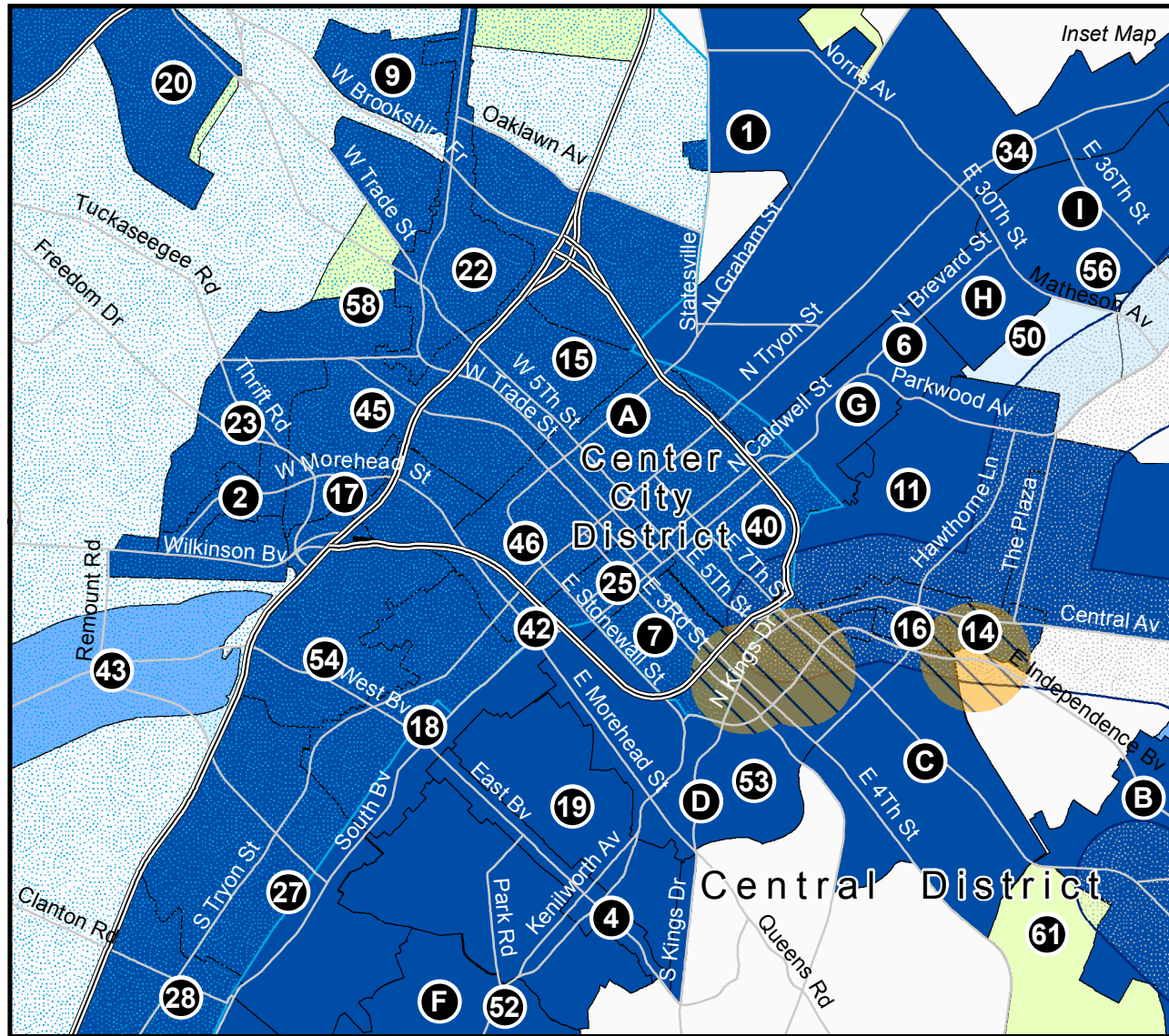


Charlotte-Mecklenburg Area Plans that Update the District Plans



- ### Area Plans
- Plans Adopted Between 2001-Present**
- 2001**
 - 1 Eastside Strategy Plan *
 - 2 Statesville Avenue Corridor Plan
 - 3 West Morehead Corridor Plan
 - 2002**
 - 4 Brookshire Boulevard/I-485 Area Plan
 - 5 East Boulevard Pedscape Plan
 - 6 Newell Area Plan
 - 7 Optimist Park Neighborhood Plan
 - 8 Second Ward Neighborhood Master Plan
 - 9 Thomasboro/Hoskins Area Plan
 - 10 Washington Heights Neighborhood Plan
 - 2003**
 - 11 Albemarle Road/I-485 Interchange Study
 - 12 Belmont Area Revitalization Plan
 - 13 Dixie-Berryhill Strategic Plan
 - 14 Eastland Area Plan
 - 15 Plaza-Central Pedscape Plan
 - 16 Third Ward Neighborhood Vision Plan
 - 2004**
 - 17 Sunnyside Pedscape and Land Use Plan
 - 18 West Morehead Land Use and Pedscape Plan
 - 2005**
 - 19 South End Transit Station Area Plan
 - 2006**
 - 20 Dilworth Land Use and Streetscape Plan
 - 21 Lakewood Neighborhood Plan
 - 22 Rocky River Area Plan
 - 23 West End Land Use and Pedscape Plan

- 2007**
 - 24 Bryant Park Land Use and Streetscape Plan
 - 25 University City Area Plan (Includes Transit Station Area Plans)
- 2008**
 - 26 Brevard Street Land Use and Urban Design
 - 27 Northlake Area Plan (Includes Transit Station Area Plan)
 - 28 New Bern Transit Station Area Plan
 - 29 Scalegate Transit Station Area Plan
 - 30 Woodlawn Transit Station Area Plan
 - 31 Tyvola / Archdale Transit Station Area Plan
- 2009**
 - 32 Arrowood Transit Station Area Plan
 - 33 I-485 / Sharon Rd West Transit Station Area Plan
- 2010**
 - 34 Catawba Area Plan
 - 35 North Tryon Area Plan
 - 36 University Research Park Area Plan
- 2011**
 - 37 Center City 2020 Plan
 - 38 Independence Blvd Area Plan (Includes Transit Station Area Plan)
 - 39 Elizabeth Area Plan
- 2012**
 - 40 Midtown Morehead Cherry Area Plan
 - 41 Steele Creek Area Plan
- 2013**
 - 42 Park Woodlawn Area Plan
 - 43 Parkwood Transit Station Area Plan
 - 44 25th Street Transit Station Area Plan
 - 45 36th Street Transit Station Area Plan
 - 46 Sugar Creek Transit Station Area Plan
 - 47 Old Concord Transit Station Area Plan
 - 48 Tom Hunter Transit Station Area Plan
- 2015**
 - 49 Prosperity Hucks Area Plan
 - 50 University City Area Plan Update

The City of Charlotte's Sphere consists of 240,604 acres. All of this area is covered by an adopted land use plan, referred to as a District Plan. This map shows that 180,798 acres, or 75% of the Sphere is covered by an area plan that has been adopted (or is underway) since the adoption of the District Plans.

Note: If a listed plan pre-dates District Plan adoption, it was specifically referenced in District Plan to remain in effect.

Legend

- Charlotte ETJ
- Mecklenburg County
- District Plan Boundary
- Interstate
- Major Roads
- * Represents the Eastside Strategy Plan
- ** Represents the I-485 Interchange Analysis
- *** Represents the Westside Strategic Plan
- 1/4 Mile Transit Station Buffer, if no adopted Transit Station Area Plan or not within the I-277 Loop.

- Plans Adopted Between 1996 & 2000**
- 1996**
 - 39 Oakhurst Land Use and Zoning Plan
 - 1997**
 - 40 First Ward Master Plan
 - 1998**
 - 41 Briar Creek/Woodland/Merry Oaks Small Area Plan
 - 42 South End/Uptown Rail Corridor
 - 43 West Boulevard Corridor Plan
 - 1999**
 - 44 I-485 Interchange Analysis **
 - 45 Prosperity Church Road Villages
 - 46 Wesley Heights Neighborhood Plan
 - 2000**
 - 47 Center City 2010 Vision Plan
 - 48 Northeast Area Plan
 - 49 Providence Road/I-485 Area Plan
 - 50 Southpark Small Area Plan
 - 51 Westside Strategic Plan***
- Plans Adopted Before 1996**
- 1991**
 - 52 Villa Heights Special Project Plan
 - 1992**
 - 53 Lower Steele Creek Area Plan
 - 54 Park Road Corridor Plan
 - 1993**
 - 55 Cherry Small Area Plan
 - 56 Wilmore Small Area Plan
 - 1994**
 - 57 Mount Holly Road Special Project Plan
 - 1995**
 - 58 North Charlotte
- Action Plans**
- 59 Belmont Neighborhood Action Plan (1995) (See #11)
 - 60 Lakewood Neighborhood Action Plan (1995) (See #20)
 - 61 North Tryon Street Action Plan (1995) (See #34)
 - 62 Reid Park Neighborhood Action Plan (1995)
 - 63 Seversville Neighborhood Action Plan (1995)
 - 64 Cummings Avenue/Lincoln Heights Action Plan (1996)
 - 65 Wingate Neighborhood Action Plan (1996)
 - 66 Druid Hills Neighborhood Action Plan (1997) (See #1)
 - 67 Grier Heights Neighborhood Action Plan (1998)